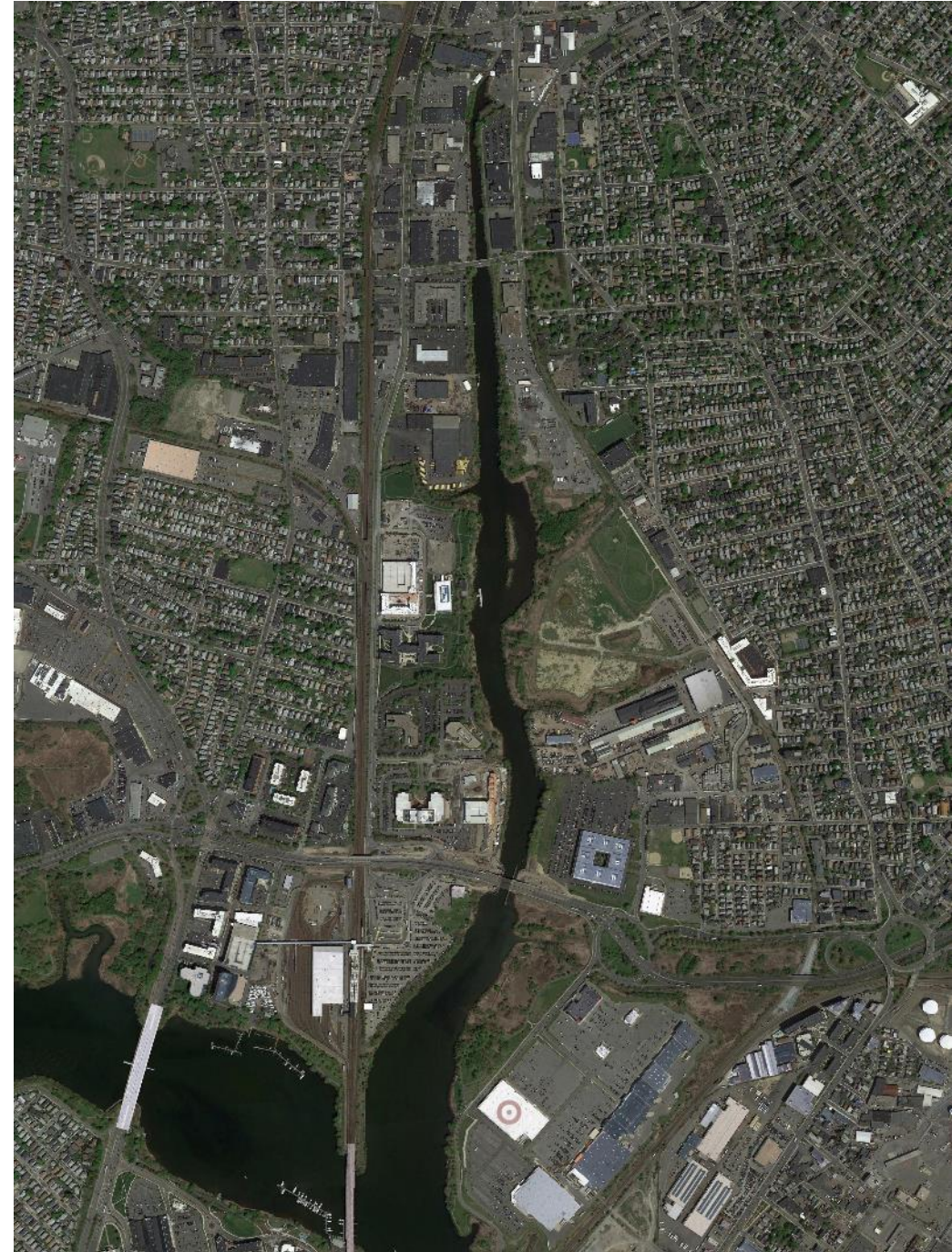


MALDEN RIVER
GREENWAY

Agenda

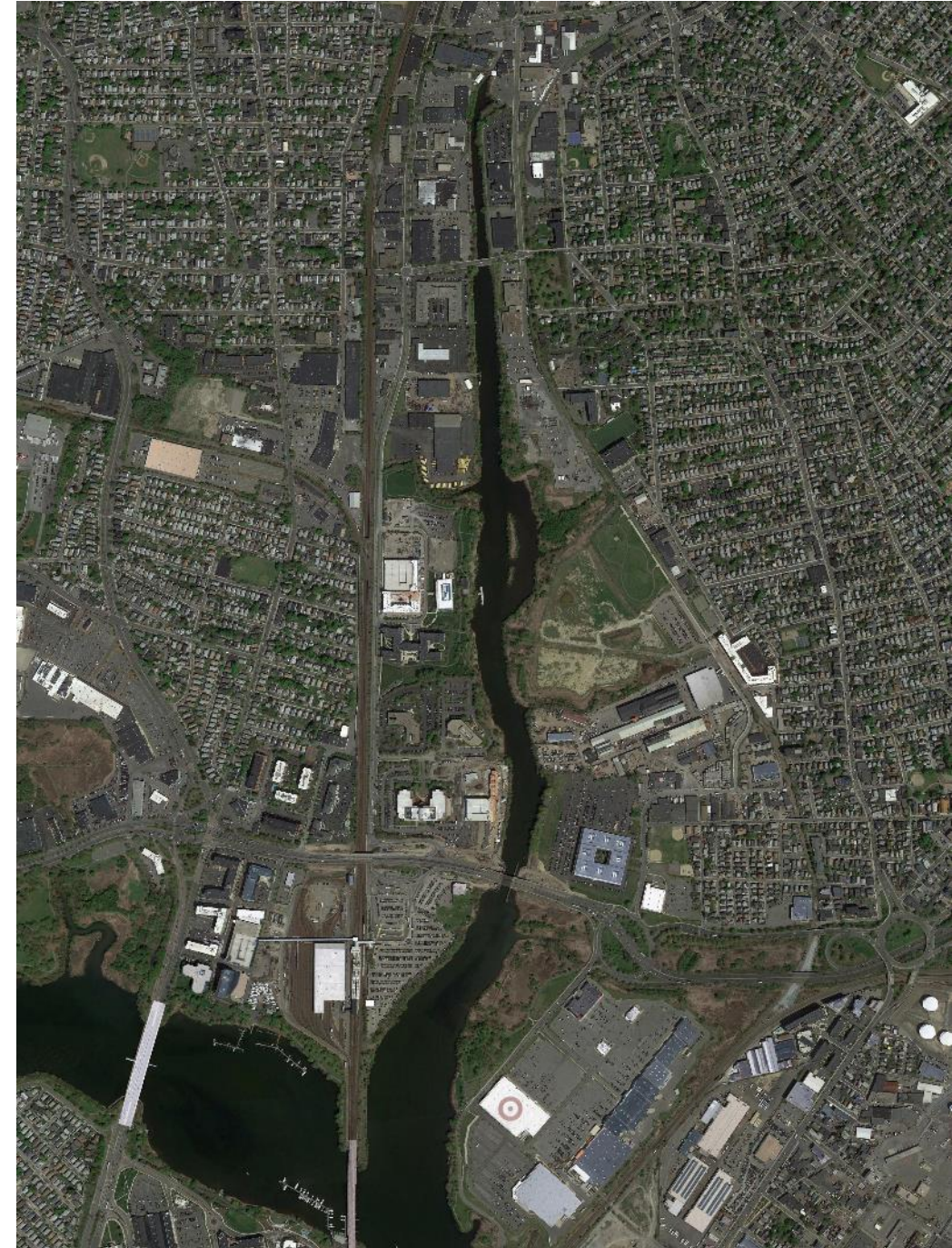
- 7:00-7:20 Open House: view and interact with posters
- 7:20-7:45 Presentation
- 7:50-8:10 Small Group Discussions
- 8:10-8:20 Report Out
- 8:20-8:30 Wrap-Up: submit comments on postcard and posters



Aerial of the Malden River

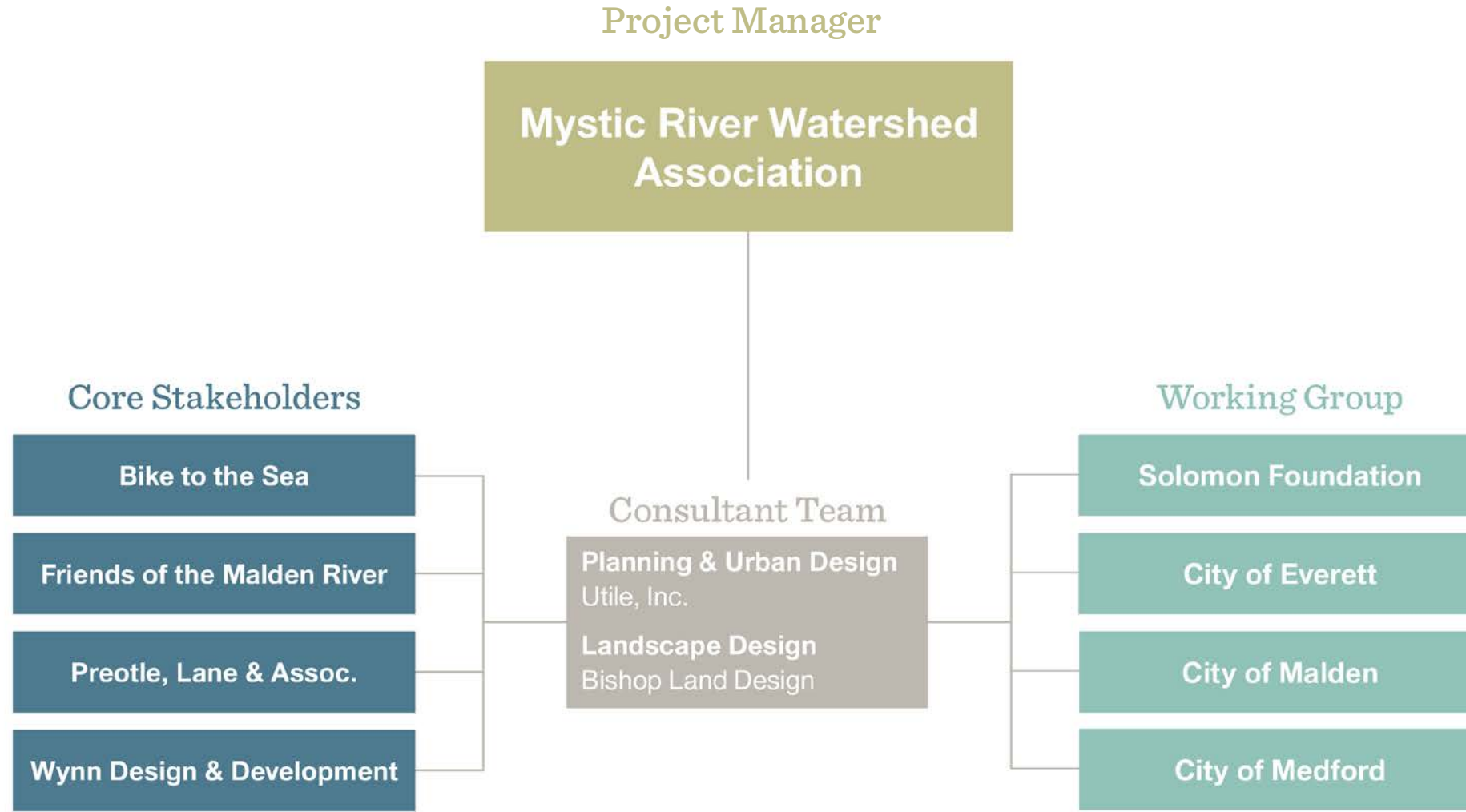
Outline of Presentation

- Welcome and Introductions
- What is the Malden River Greenway?
- Project Timeline
- Community Outreach
- Existing Conditions Analysis
- Open House Instructions

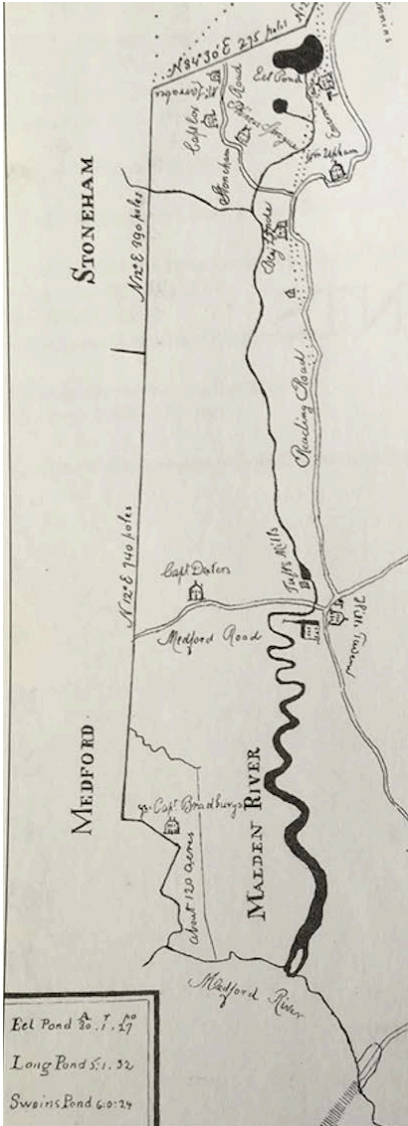


Aerial of the Malden River

Organizational Chart



Malden River's Past



From marshes to industry

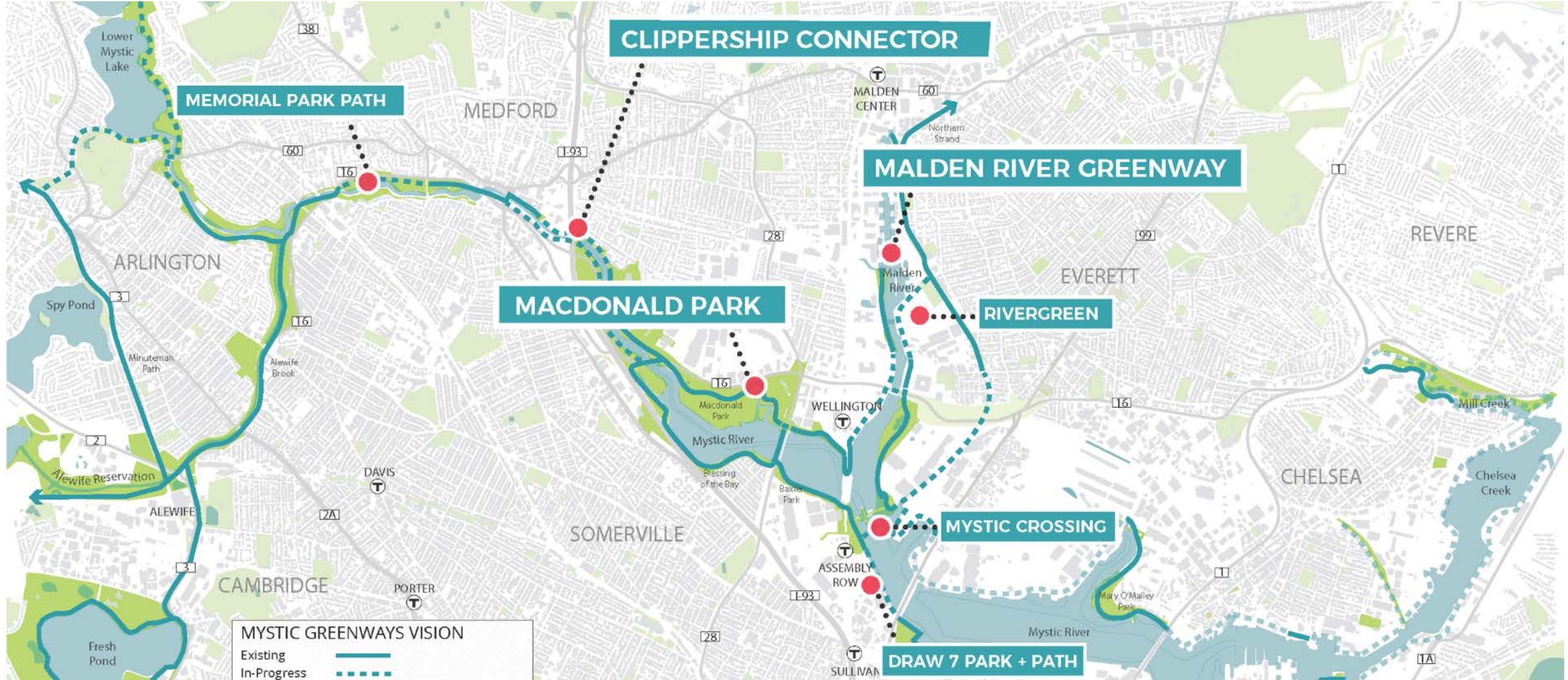
- The river transitioned to industrial uses and was channelized in the 1880's.
- It has remained such until recent years.

The Greenway Vision

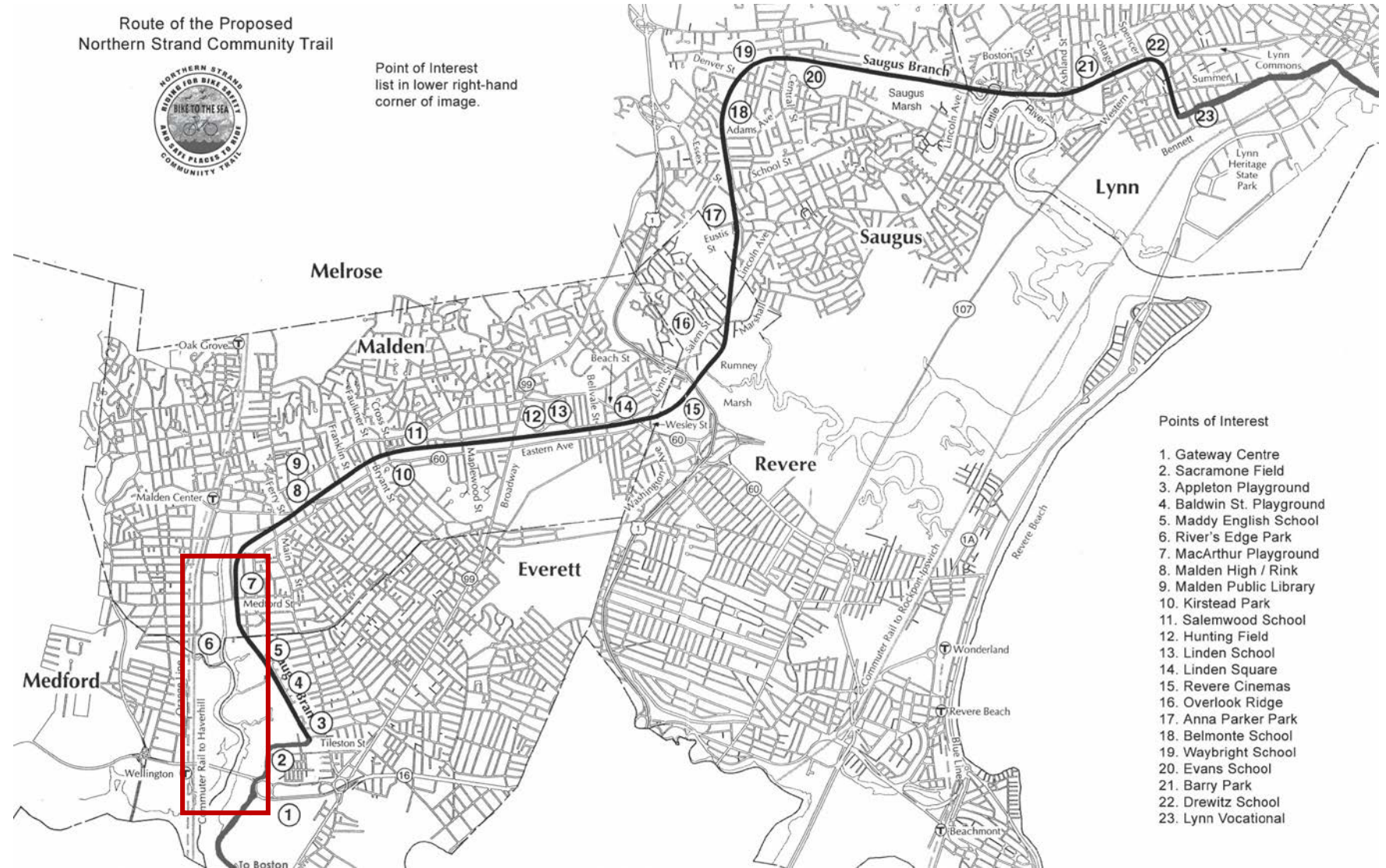
- Develop a shared, **illustrative vision plan** and images for the Malden River Greenway
- Identify and **scope discrete projects** and seek funding sources for implementation
- Create **design standards** for riverfront park and path development
- Raise the visibility and **increase public awareness** of the Malden River
- Build a **unified coalition** of cities, nonprofits and community members



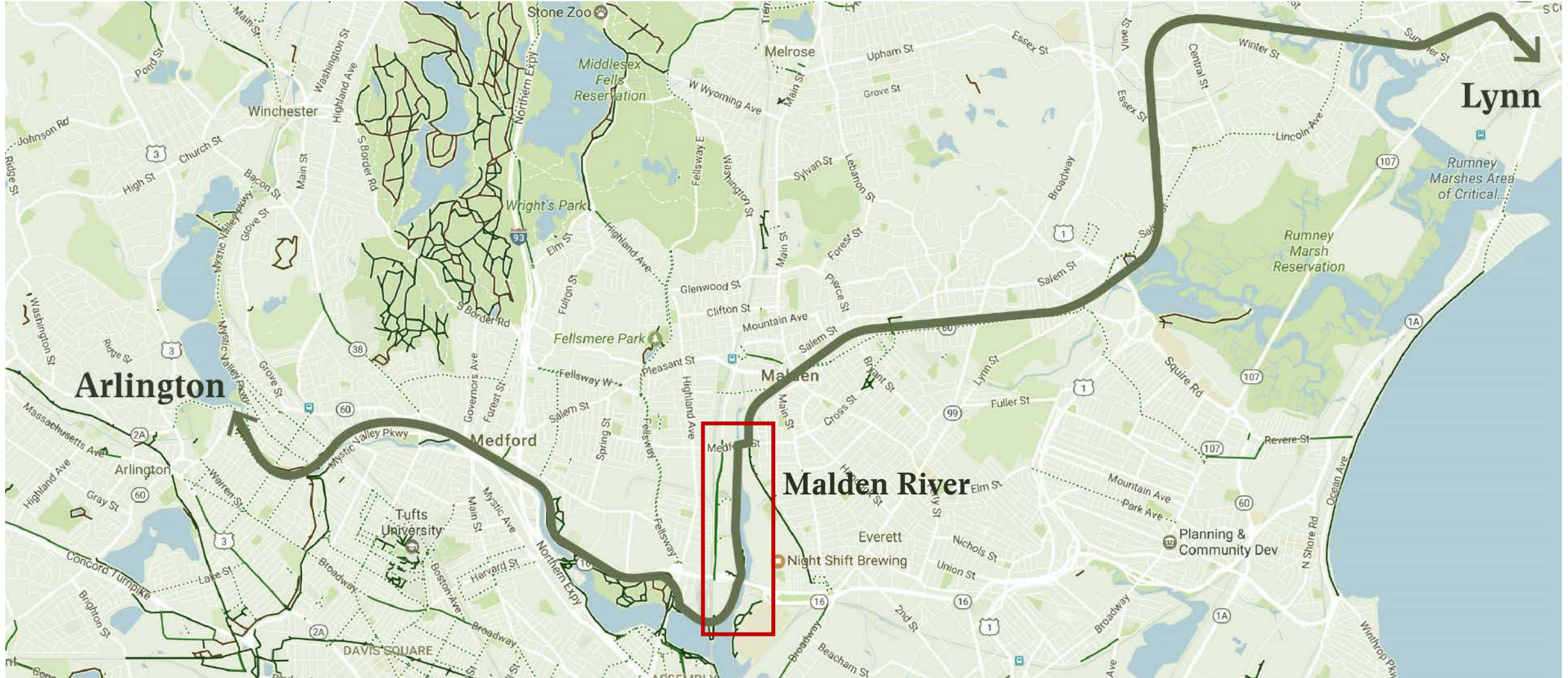
Mystic River Greenways



Northern Strand Trail



Malden River Greenway could fill the gap in a Lynn to Arlington Link



Local Greenway Examples



Charles River Path

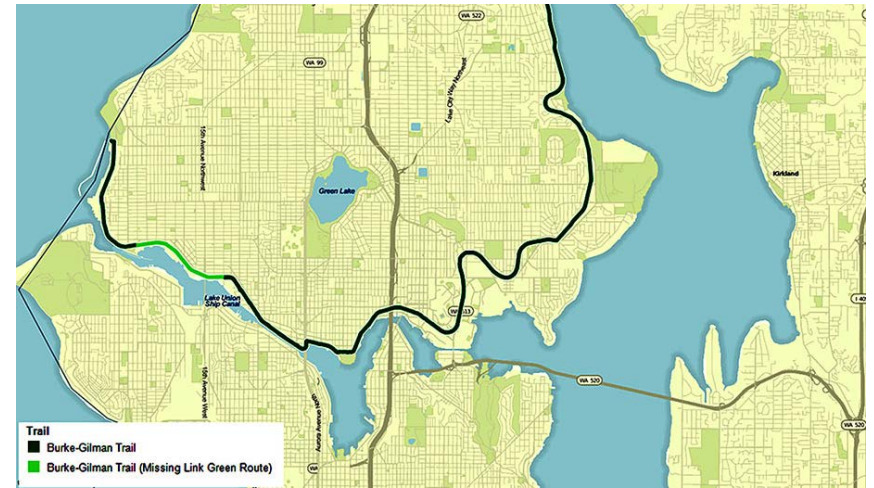


Charles River Bridge

National Greenway Examples



Burke Gilman Trail – Seattle, WA



Project Timeline and Scope

Project Timeline and Scope

A Phase One (May-June)

1 Project Kick-off and Existing Conditions Analysis

- Listening session with Steering Committee, tours with Client Group
- Project overview and objectives, evaluation of the study area

2 Opportunities and Constraints

- Work that highlights neighborhood connectivity and potential greenway alignments
- **Community Meetings – present early findings to the community and solicit input on the possibilities of the Malden River**

Project Timeline and Scope

A Phase Two (July-August)

1 Master Plan for the Malden River Greenway

- Production of Greenway Master Plan allowing for neighborhood connectivity, new path alignments and future uses along the Greenway.

2 Community Engagement

- Presentation of Master Plan alternatives incorporating early community feedback and identifying key projects or connections
- Riverwalk: Organize a community river walk to explore the future paths and points of access to the riverfront.

Project Timeline and Scope

A Phase Three (August-Sept)

1 Conceptual Area Plans

- Detailed studies of focus areas recommending trail character, detailed alignments, bridges and community programming

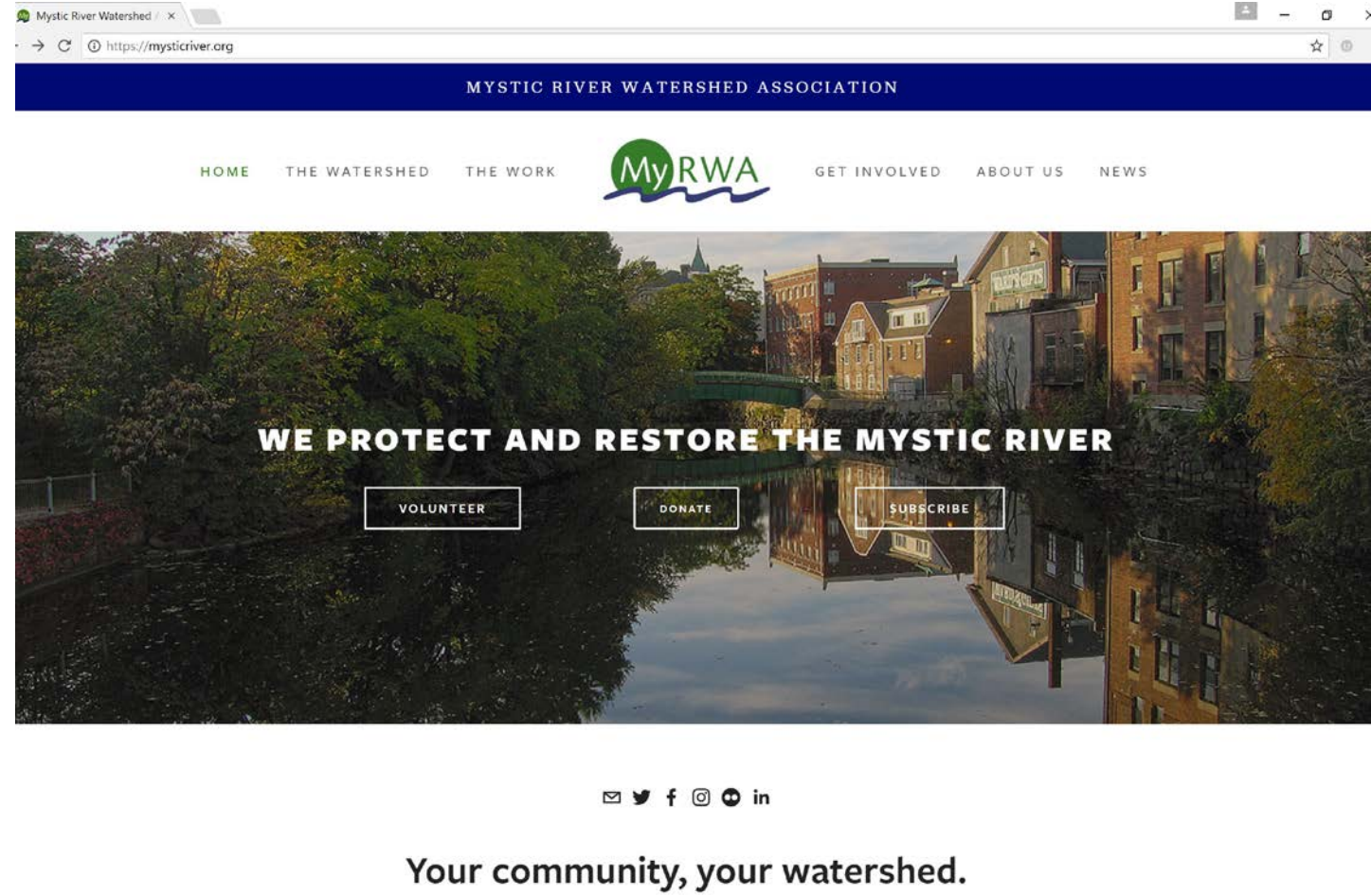
2 Community Engagement

- Final presentation of Malden River Master Plan and Focus Area Studies

Community Engagement Strategies

Engagement Strategies

1. MyRWA Website and Facebook Page
2. Online Survey
3. Mapping Tool
4. Community Meetings: Presentation and feedback loops for planning process



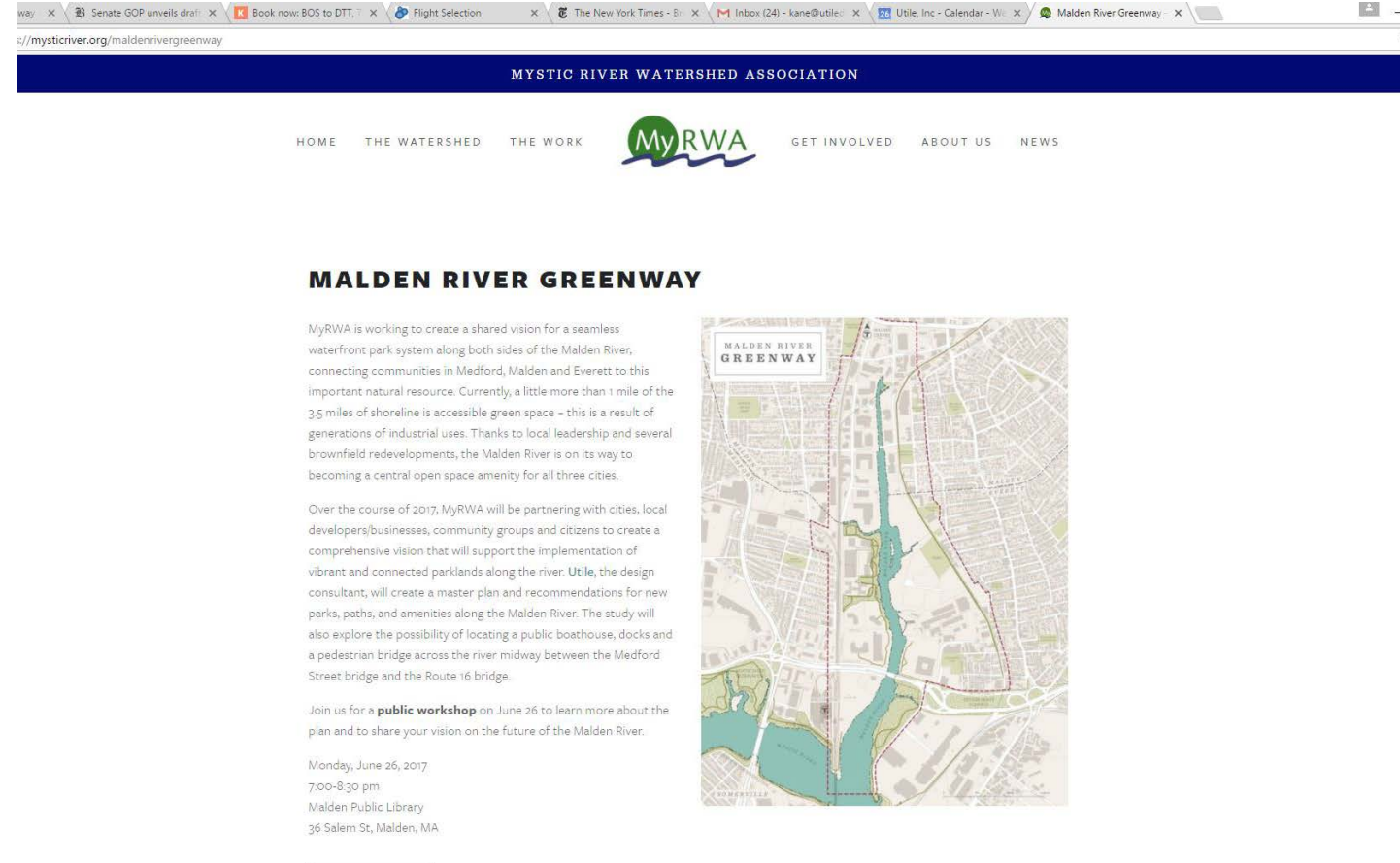
Project Website

The “official home” of the project

- Project summary and milestones
- Links to on-line survey
- Links to project documents
- Event listings

Website:

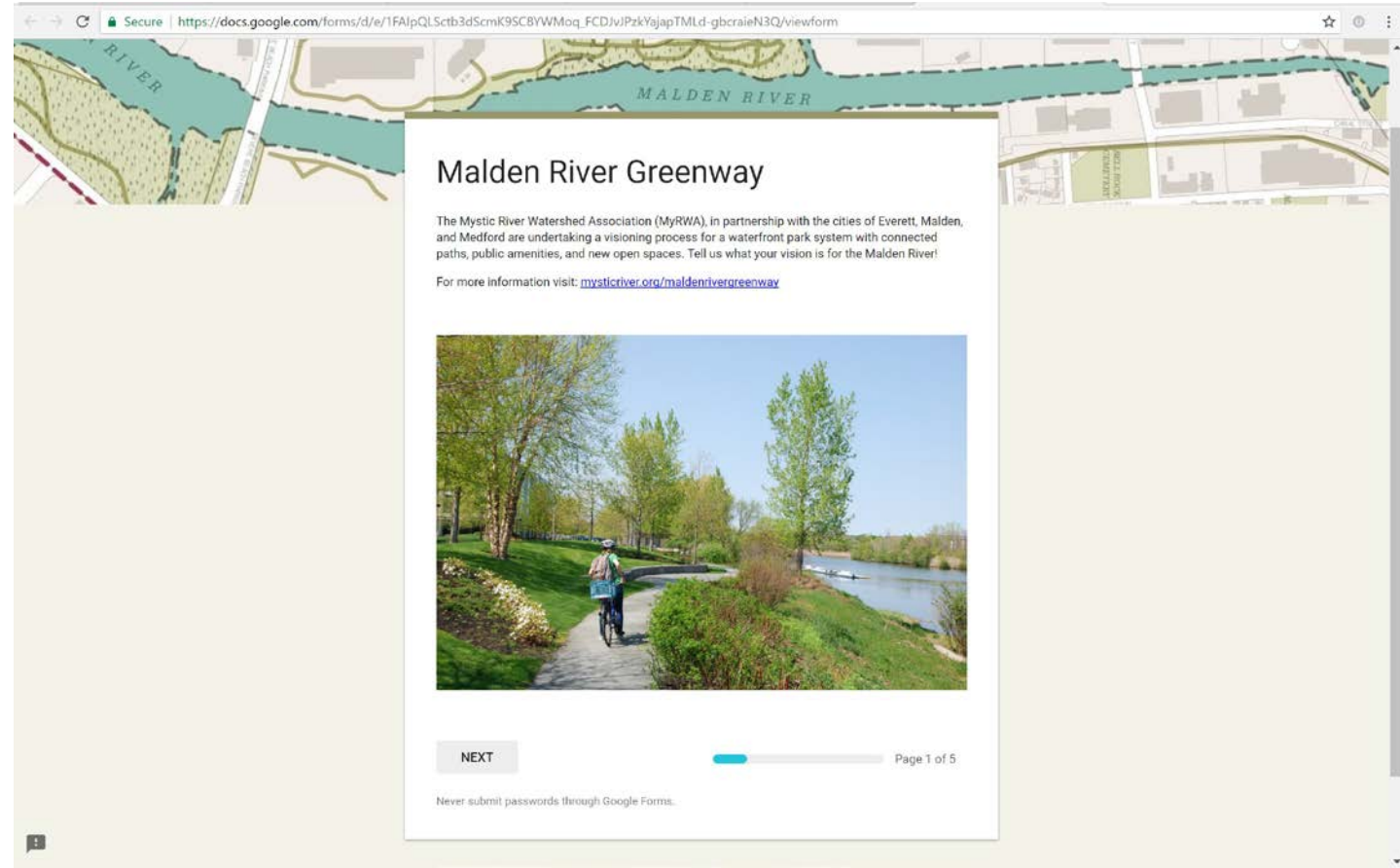
mysticriver.org/maldenrivergreenway



Online Survey

What we'd love to hear!

- Phrases for vision statement
- Most important factors for vision:
 - Access?
 - Community Uses?
 - Connectivity?
- Information about respondent
 - What they do on the riverfront?
 - How do they access the river?
 - How do they get to the river (drive, walk, bike, transit)?
 - How often do they visit the Malden River?
 - User Profile (age/gender/race)
- General Comments



Survey: What we've heard!

When you think of the Malden River what words or phrases come to mind?

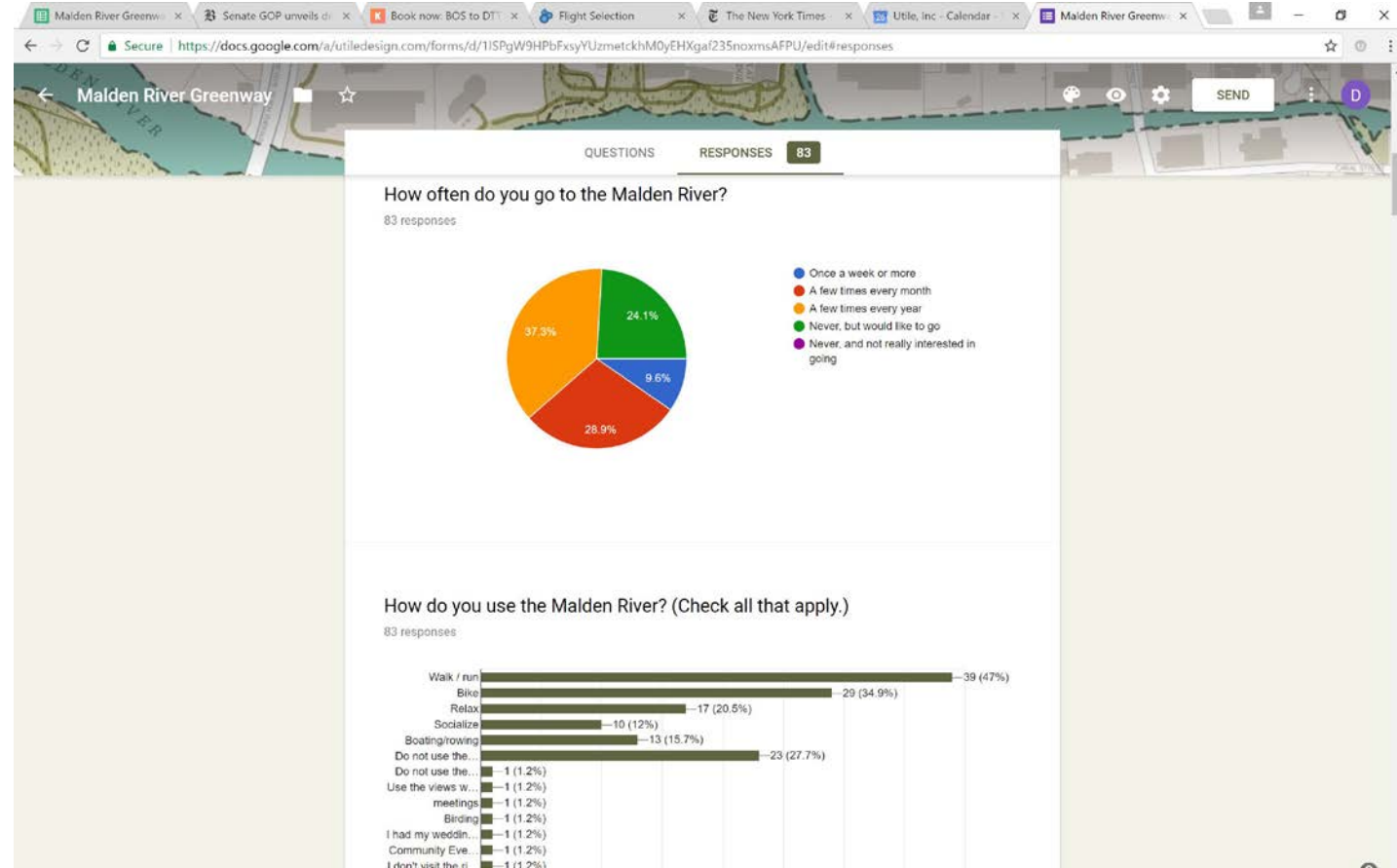
- Relatively peaceful (vs the Mystic, which has 1-93 adjacent). Not very clean.
- Industrial, polluted, under restoration, wildlife habitat, buried underground

Name a few things you love and would keep the same about the Malden River?

- It's reach up into the heart of Malden, the wildness coexisting with the urban

Name a few things you dislike and would change about the Malden River?

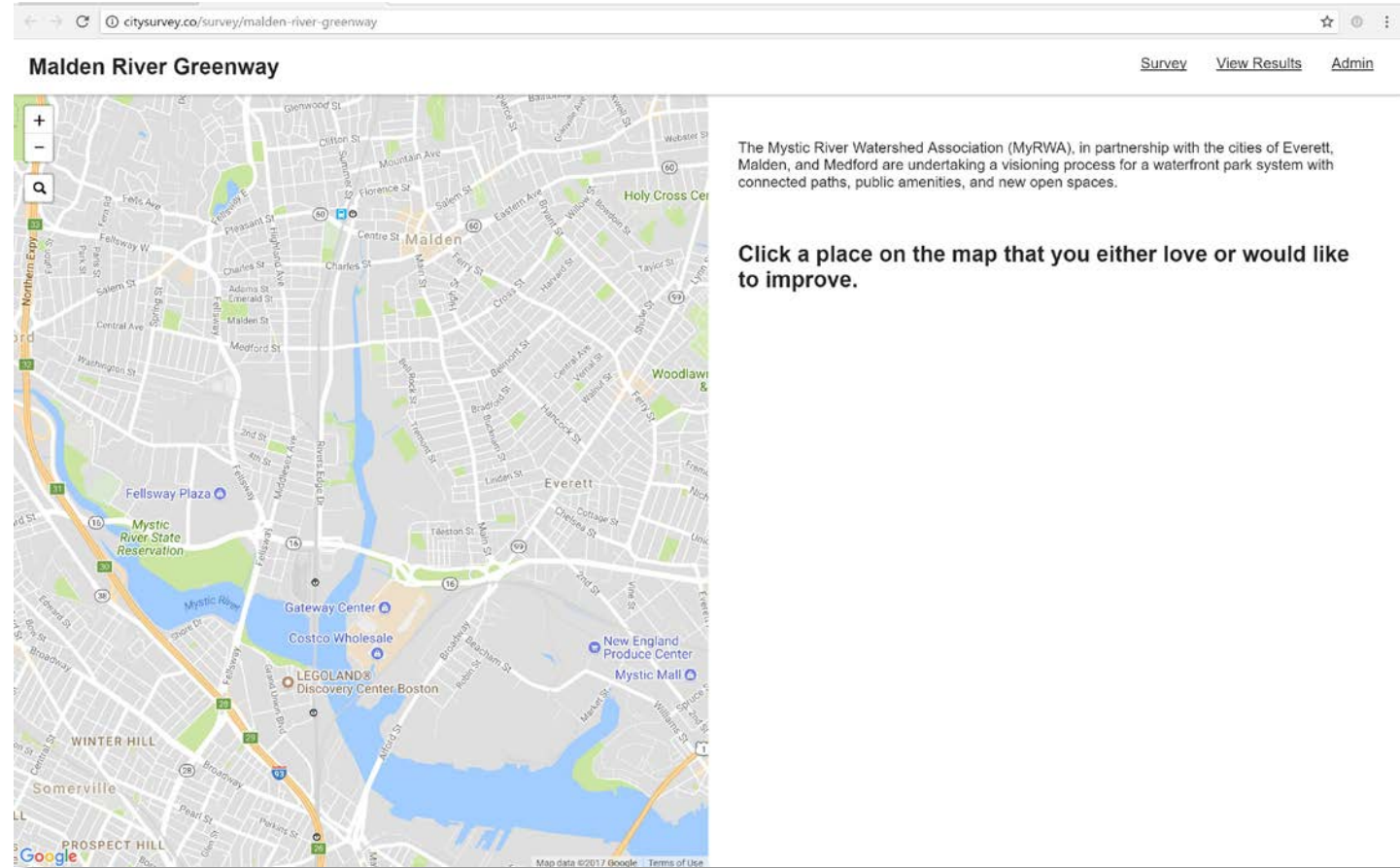
- Make it cleaner, more accessible to the public for enjoyment
- More access; addition of native plants
- The Malden side behind Super 88 is a disgrace



Spatial Survey

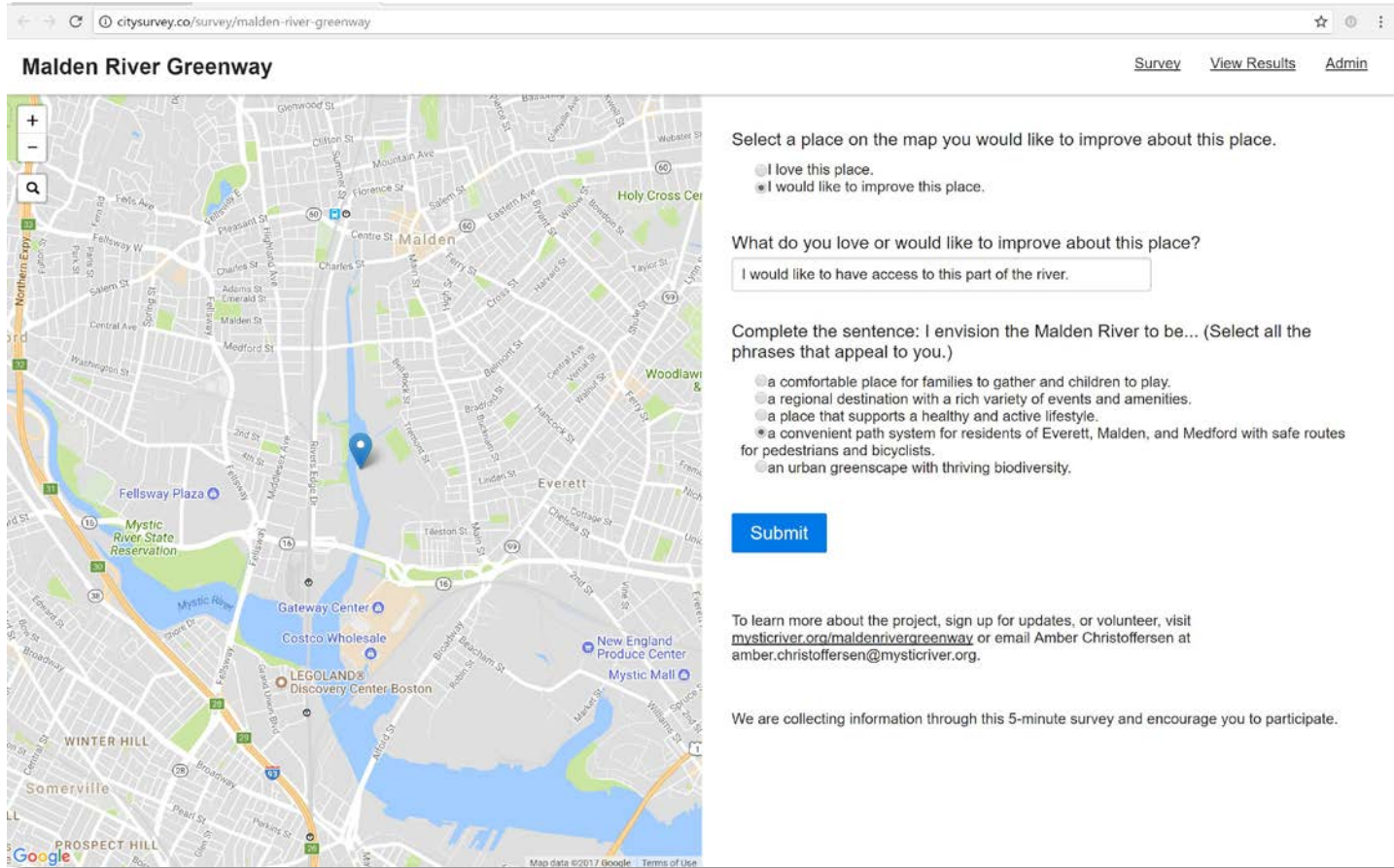
Tool ties responses to a point on the map, for instance

- Mark the places you love,
- And the places that need improvement,
- Then tell us why!



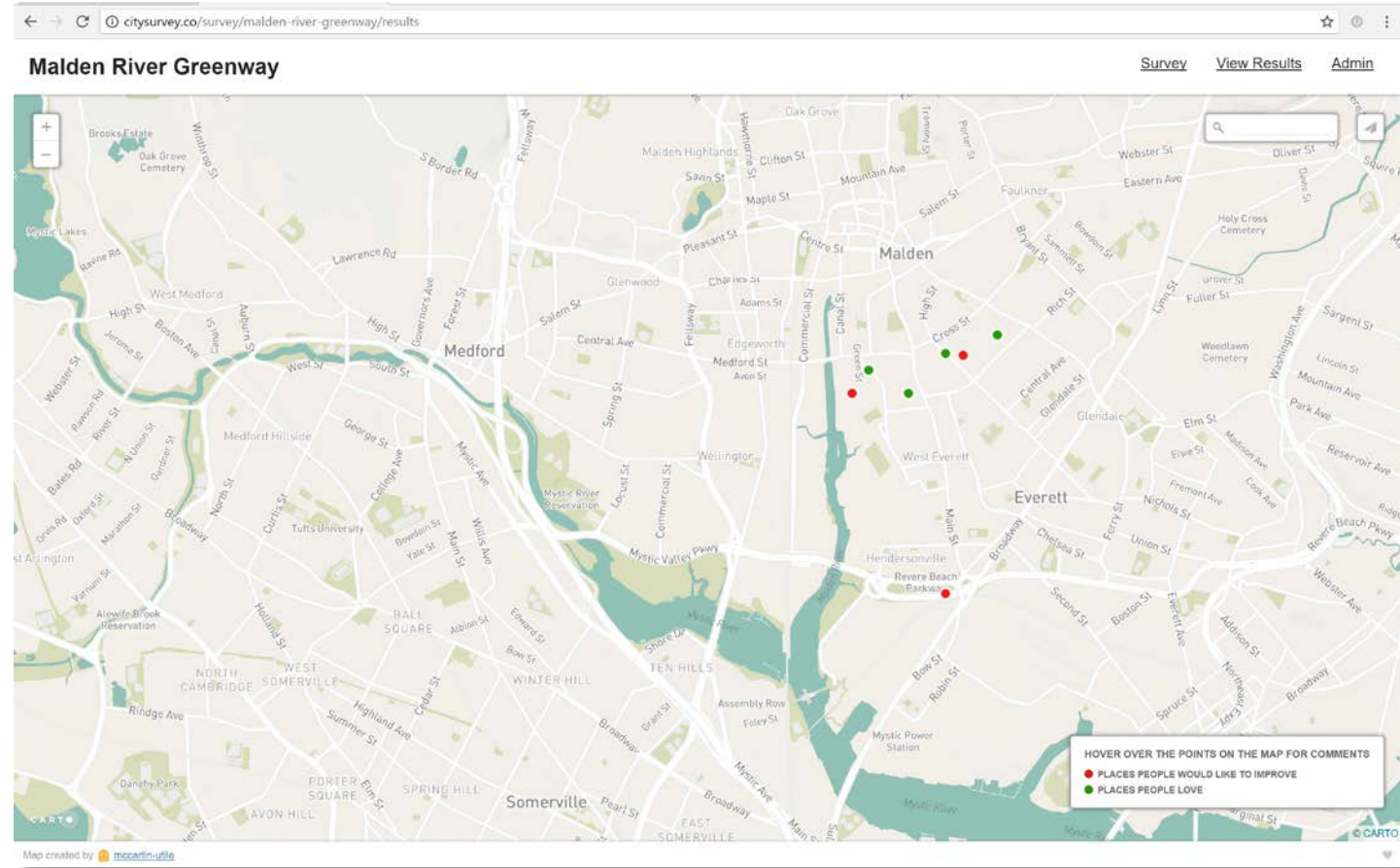
Spatial Survey

- User is able to describe why they chose that point
- And how they envision the future of the Malden River



Spatial Survey

- Responses will be tabulated and an ongoing/living database is created, documenting community preferences

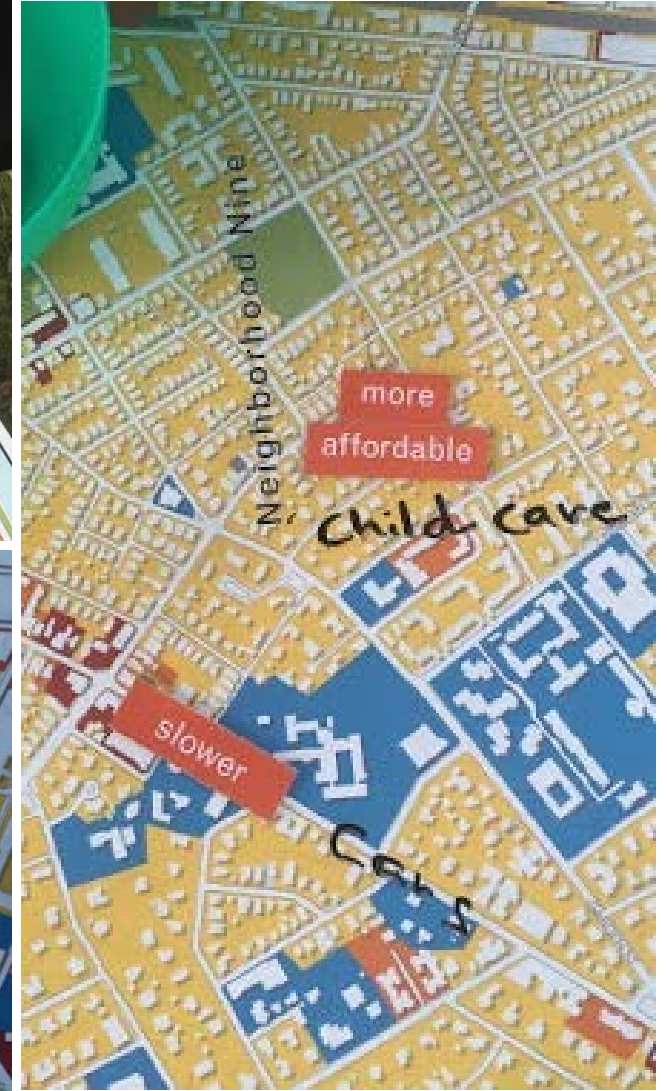
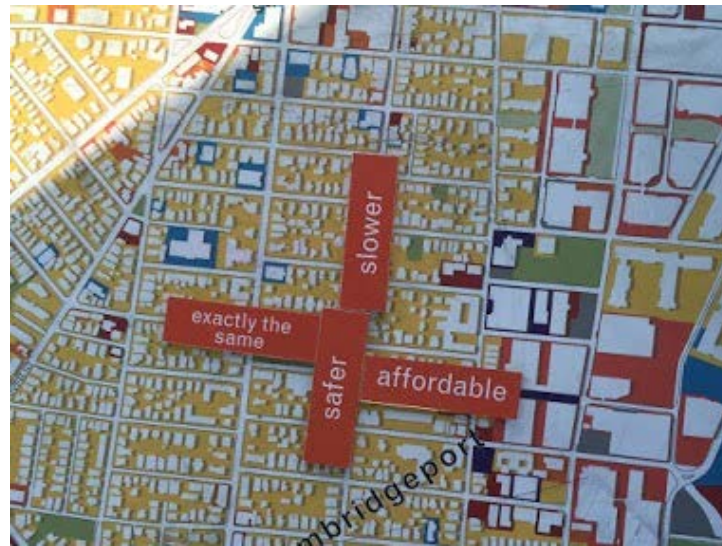


Engagement Strategies

1. MyRWA Website and Facebook Page
2. Online Survey
3. Mapping Tool
4. Community Meetings: Presentation and feedback loops for planning process



Example Activity: Mobile Engagement Station



Site Visit Observations



Site Visit Observations



Site Visit Observations

👍 Portions of the river have well landscaped multi-use paths with river access!

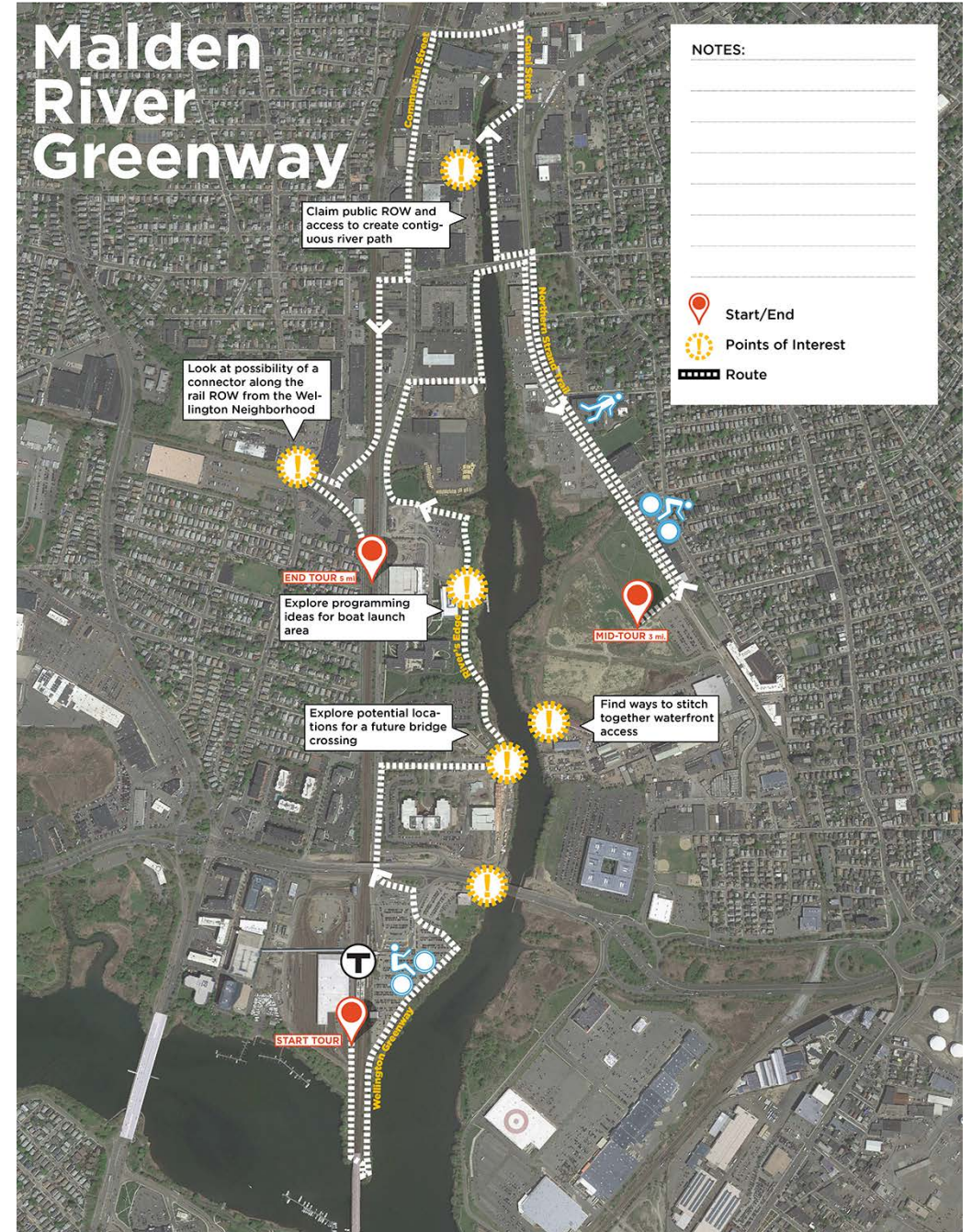
- However, there are broken links between them, so there is little continuity

👍 The river is within walking distance of two MBTA stations!

- However, it is hard to access

👍 It can complete a multi-use path network from the North Shore to Arlington!

- But it is challenged by industrial riverfront uses and property owners that haven't provided public access to the river



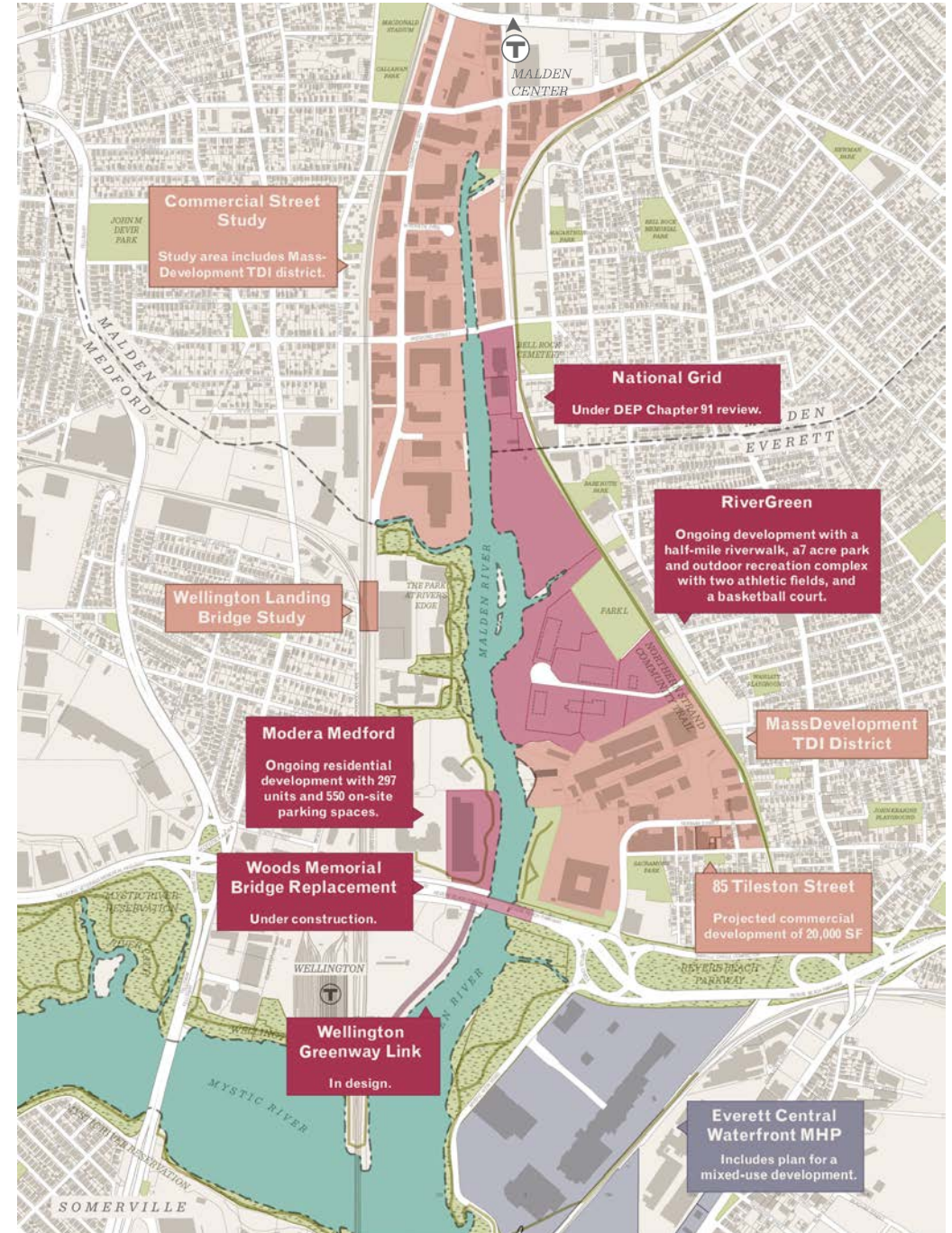
Malden River Group Tour

Analysis of the Malden River

Recent and Ongoing Plans

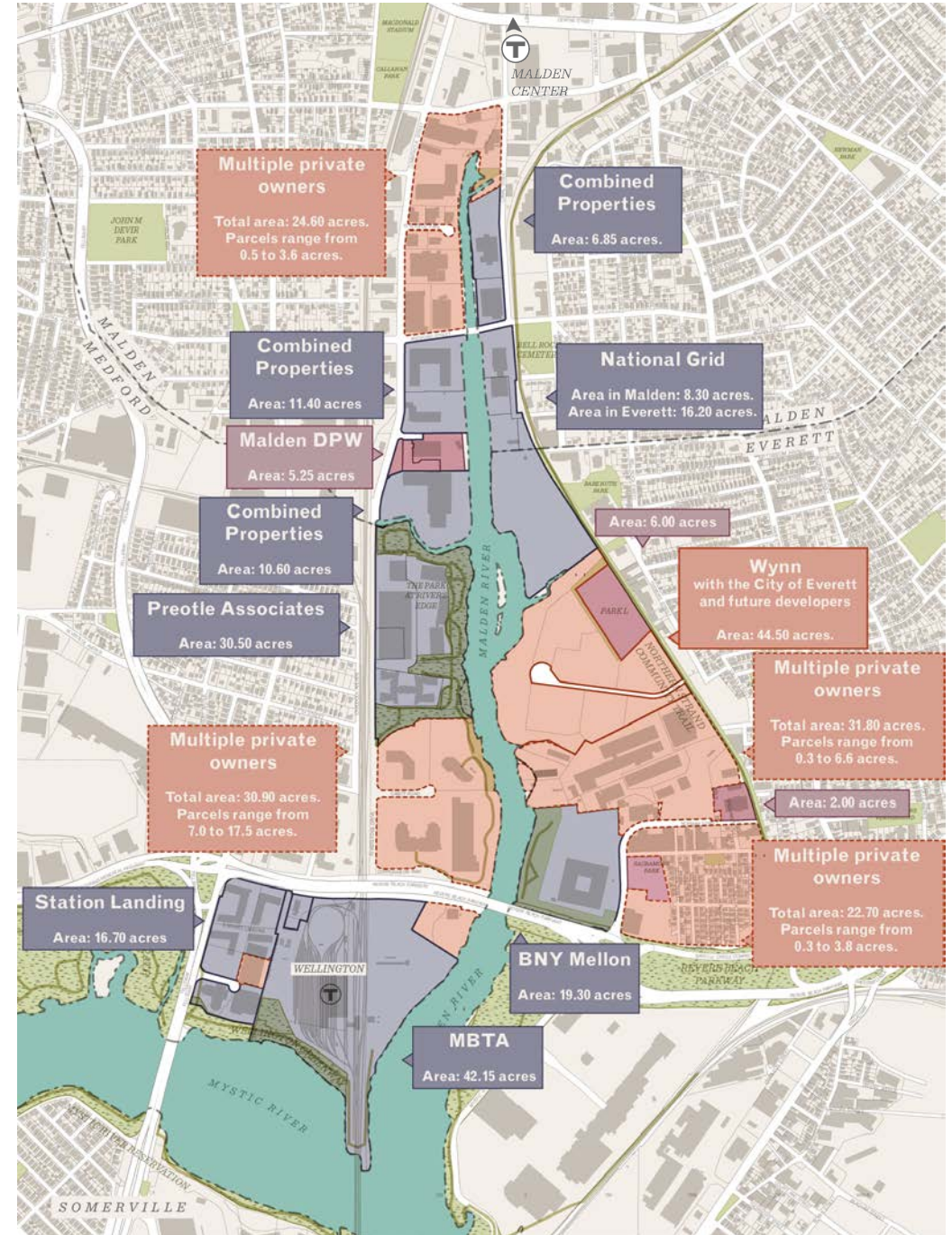
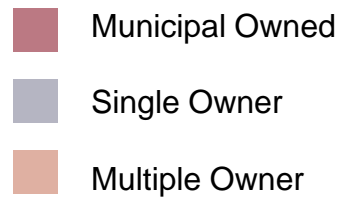
- Multiple planning and development projects will affect the way people access and enjoy the river.
- The Greenway Plan should tie together the intentions and ideas of these plans into a larger vision for the river.

- Ongoing developments
- Ongoing Plans or Studies
- Past Plans or Studies



Property Ownership and Status

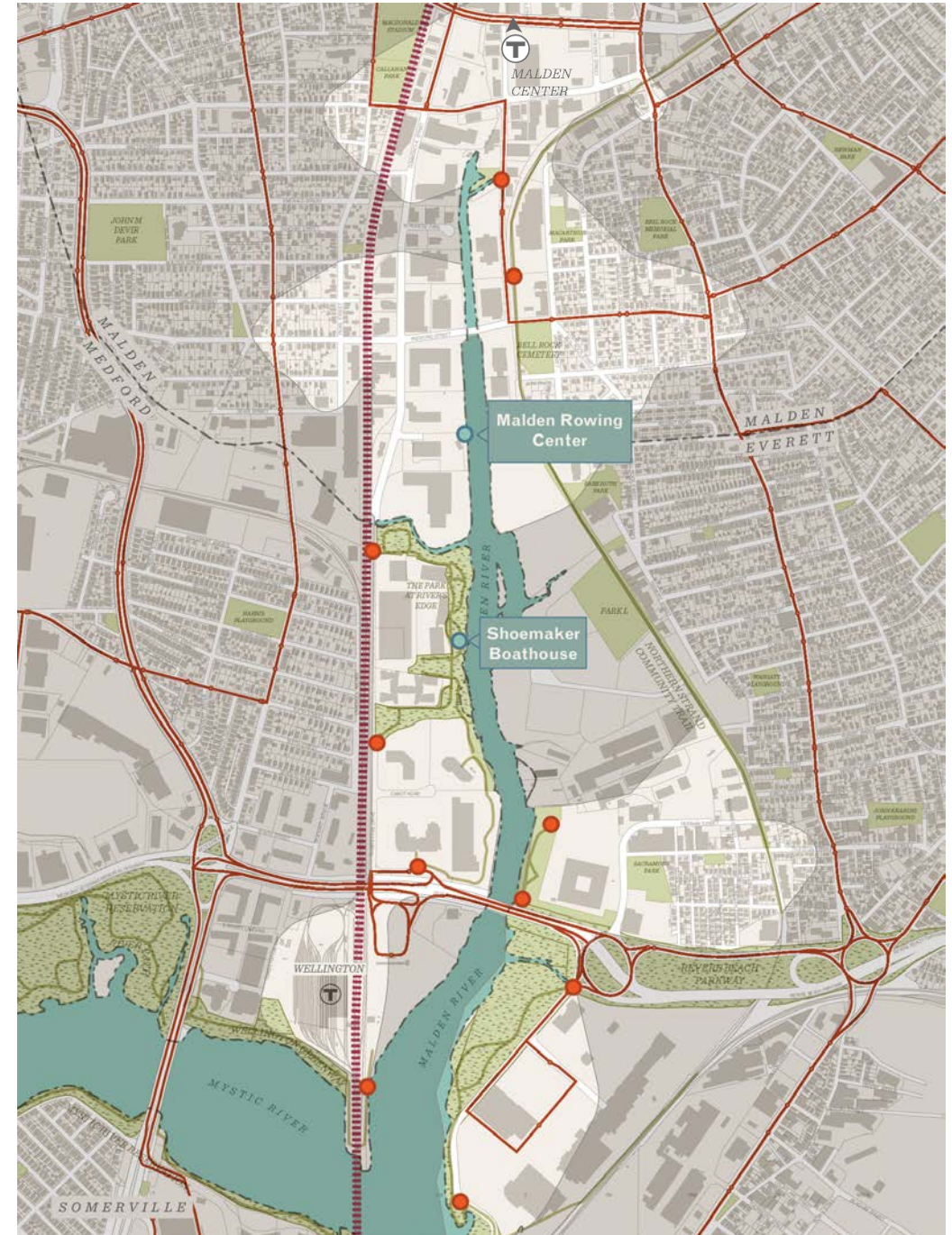
- There are a handful of large property owners along the Malden River, which can help in coordinating a universal path system.
- Multiple small property owners can make the provision of contiguous open space challenging.
- This is the case on the western river edge in Malden and north of the BNY Mellon building in Everett



Walkshed and Transit Connections

- Getting to the river by train, bike or on foot is challenging due to large roadways and infrastructure barriers
- Despite being near the river, the neighborhoods to the west and east are limited in their ability to access the river
- Barriers such as the rail lines, large roadways, fences and large industrial parcels make river access difficult at points.
- Seamless access and connections between different modes of transit should be a priority

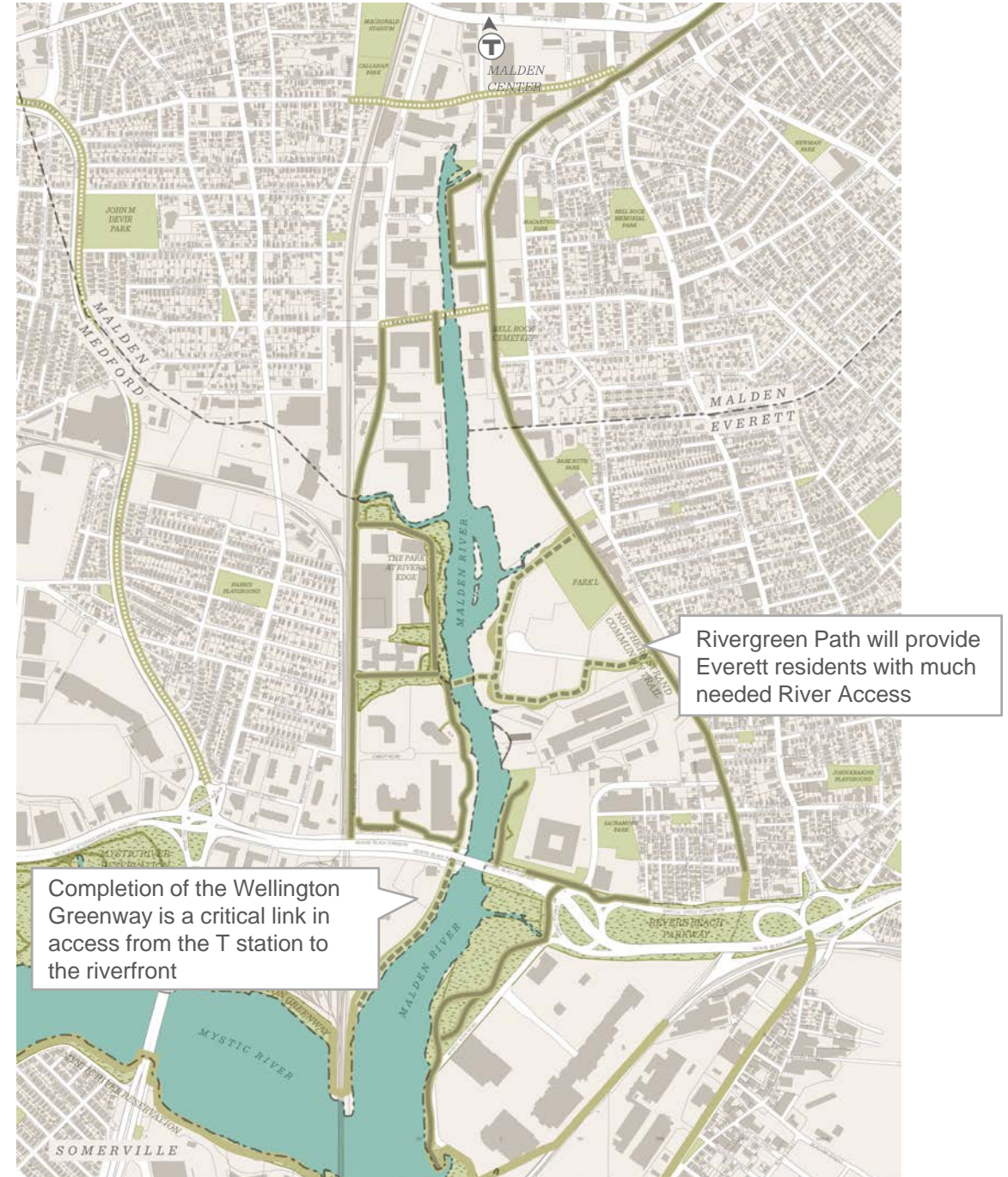
- ■ ■ Rail
- MBTA bus routes and stops
- Areas outside a half-mile walkshed of the riverfront (15-minutes)
- Point of access



Existing and Planned Paths

- Currently there is 1 mile of paths existing along the Malden River with 1 mile planned.
- While many paths exist, they are not all created equal. Paths are of varying width, material, condition and usefulness.
- Some paths are existing, but largely inaccessible, such as the BNY Mellon site.
- Ensuring broader connections to neighborhoods and adjacent greenways is fundamental to a complete network.
- Planned paths will connect the Wellington Greenway and the Northern Strand Trail to the Malden River

- Existing Paths
- Existing bike-friendly streets
- Planned Paths



Area Conditions

Area Conditions: Views



Malden River at Medford St Bridge: Looking South



Malden River at River's Edge: Looking North



View looking southeast to Everett

Area Conditions: River Access



Northern Strand Trail



DPW Site: Potential public access?



Rivergreen Site will provide public river access for Everett residents



BNY Mellon path to the Malden River



Revere Beach Pkwy reconstruction



Wellington Greenway turn at southern end of the Malden River

Area Conditions: River's Edge



River's Edge trail looking north



River's Edge Waterfront Park



End of trail at behind Moderna

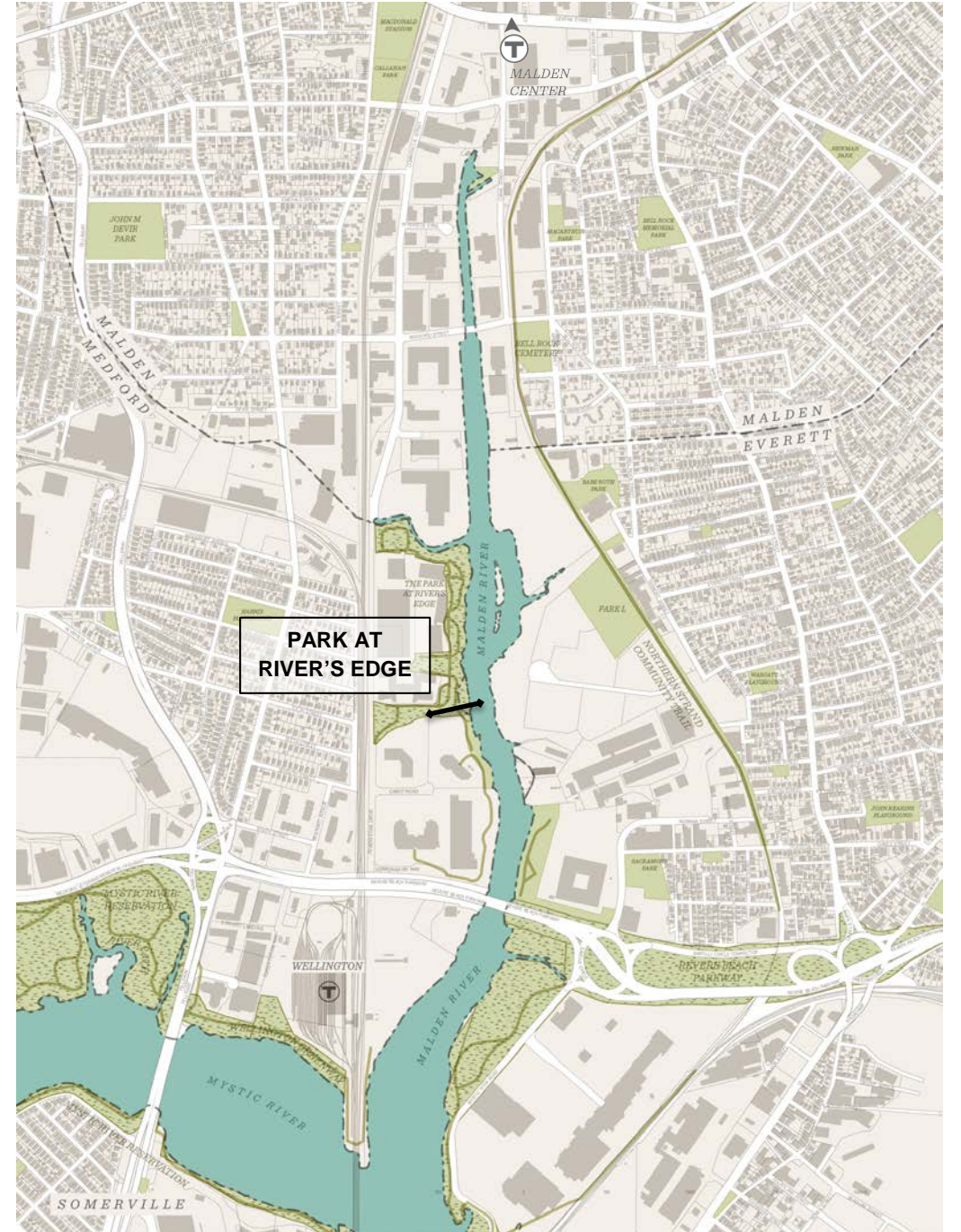
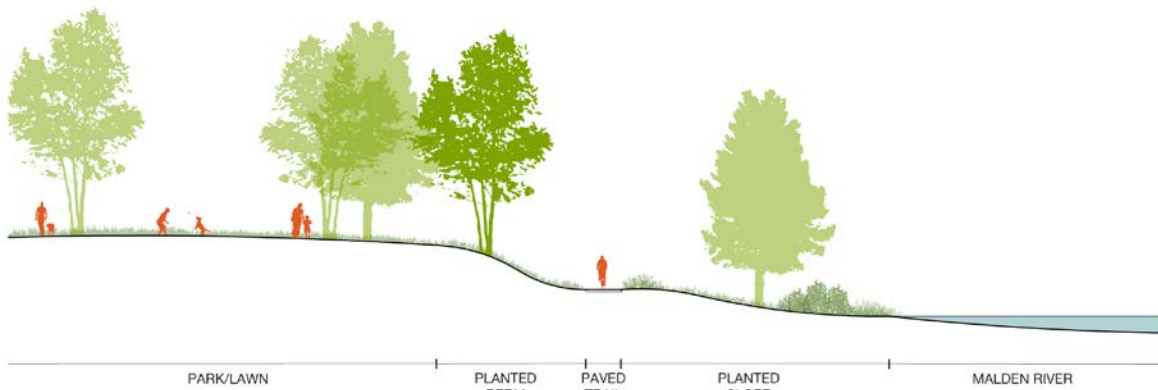


River's Edge Path

Existing Edge Conditions



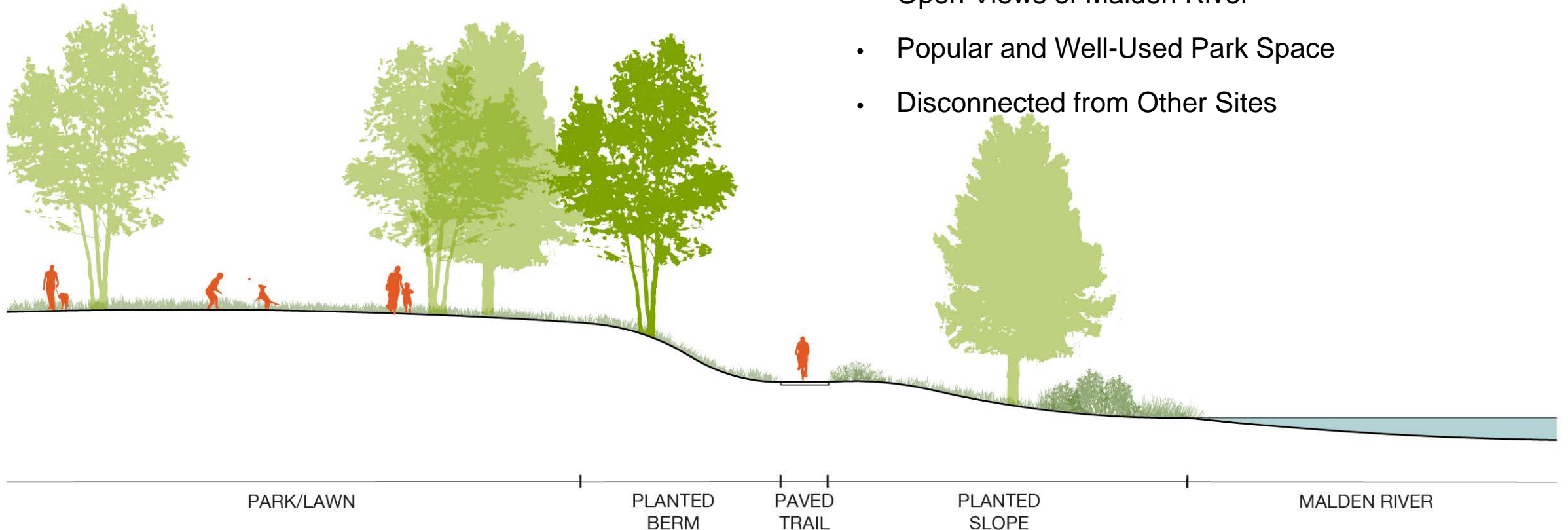
Park & Trail with Berm – River's Edge Trail Looking North



Existing Edge Conditions

Park at River's Edge – Characteristics

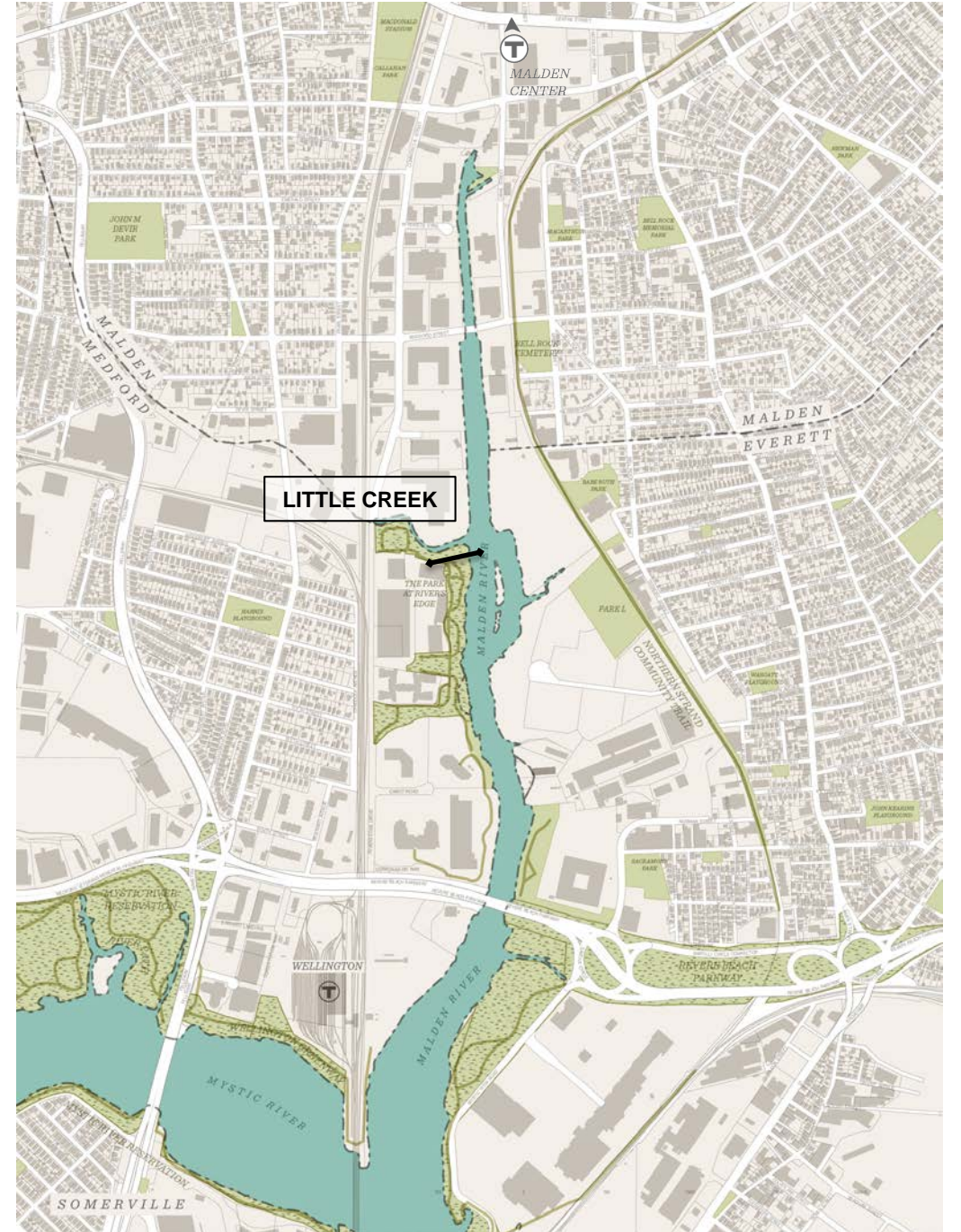
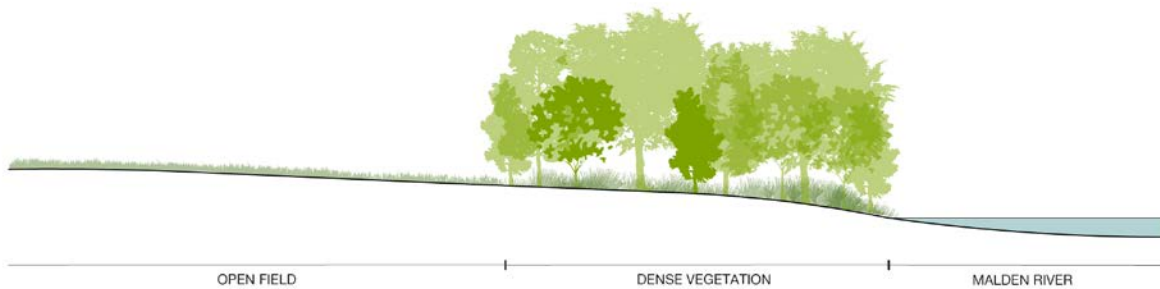
- 8' Wide Paved Trail
- Raised Berms for Flood Protection
- Open Views of Malden River
- Popular and Well-Used Park Space
- Disconnected from Other Sites



Existing Edge Conditions



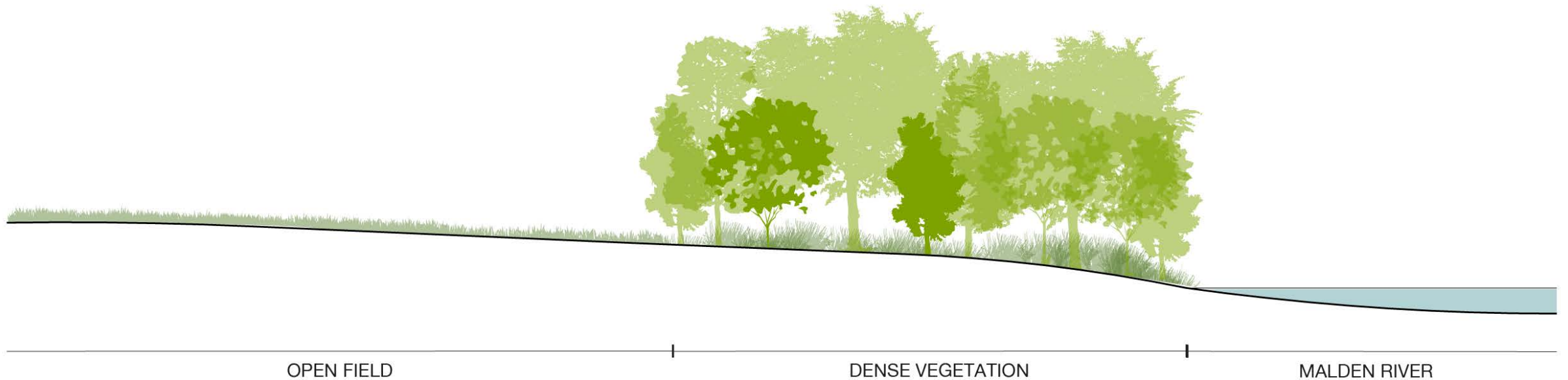
Inaccessible Riverfront with Dense Vegetation – Little Creek (Past River's Edge Trail)



Existing Edge Conditions

Little Creek – Characteristics

- No Public Access to Water's Edge
- Dense Vegetation Blocks Views to River
- Mix of Native and Invasive Plant Species



Area Conditions: Upper Malden River



Parking lot at the edge of the river bank prohibits access



Looking south from Medford St



Trail ends abruptly at parking lot



Trail is narrow and not well maintained

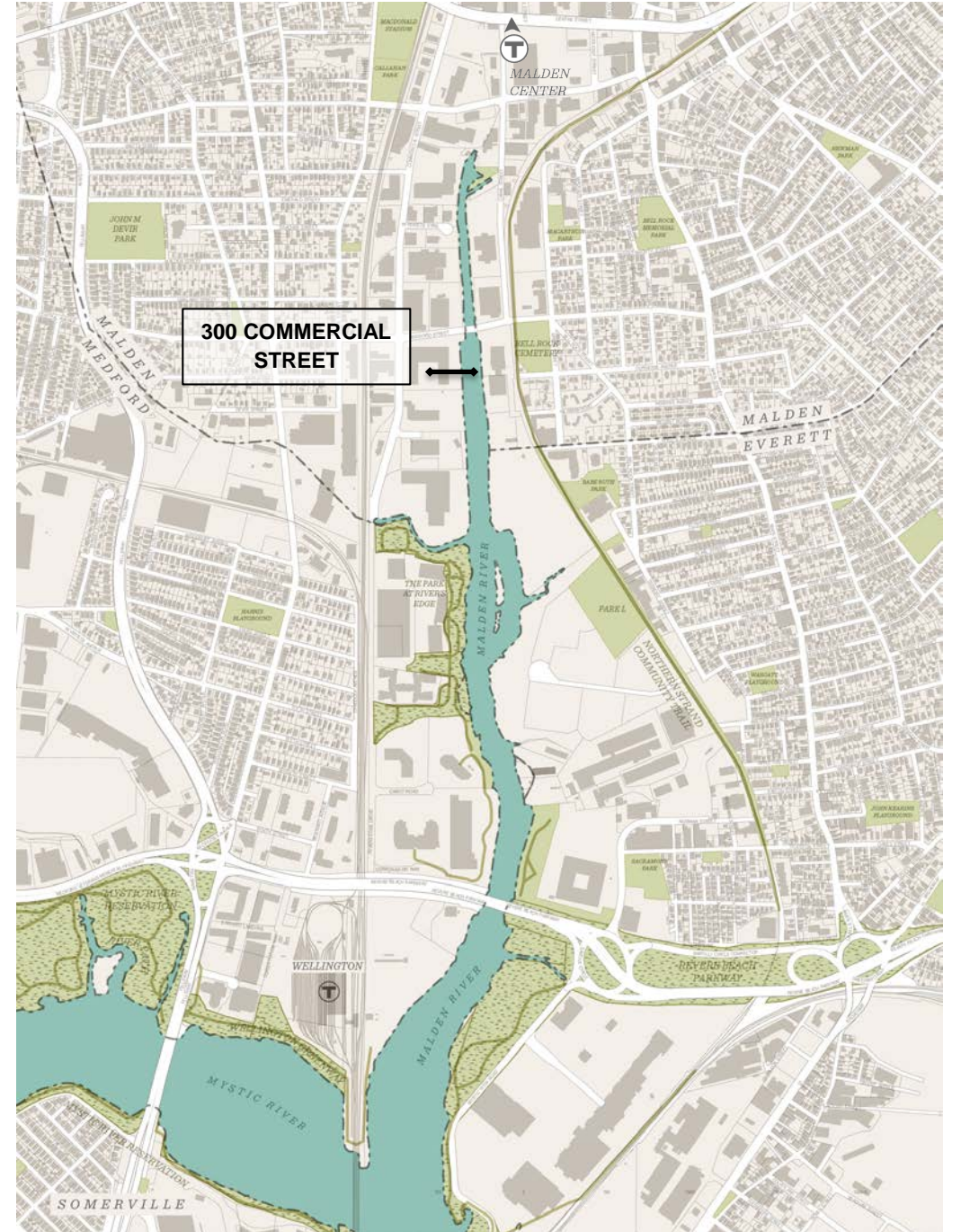
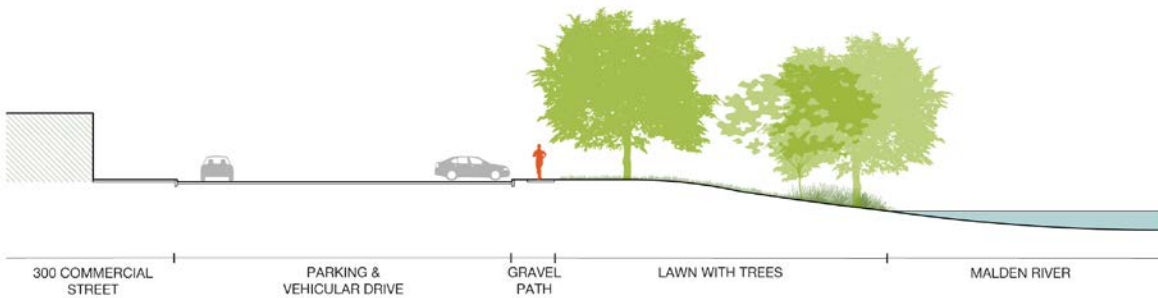


Publicly Inaccessible riverfront

Existing Edge Conditions



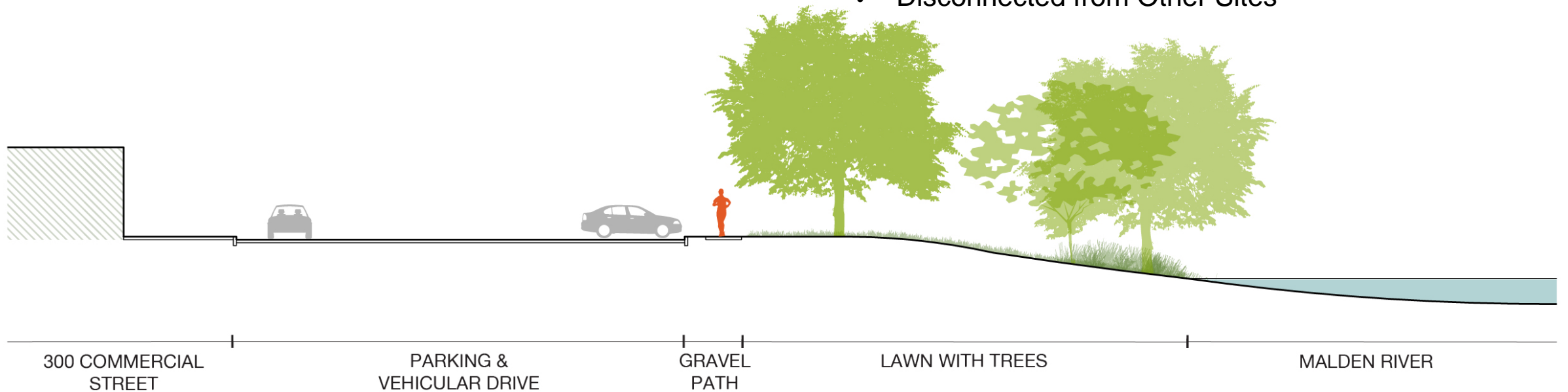
Stone Dust Trail – 300 Commercial Street Looking North



Existing Edge Conditions

300 Commercial Street – Characteristics

- 6' Stone Dust Trail
- Proximity of Trail to Parking Prioritizes Vehicular Use over Pedestrian Experience
- Open Views of River
- Site Attracts Large Numbers of Geese
- Disconnected from Other Sites

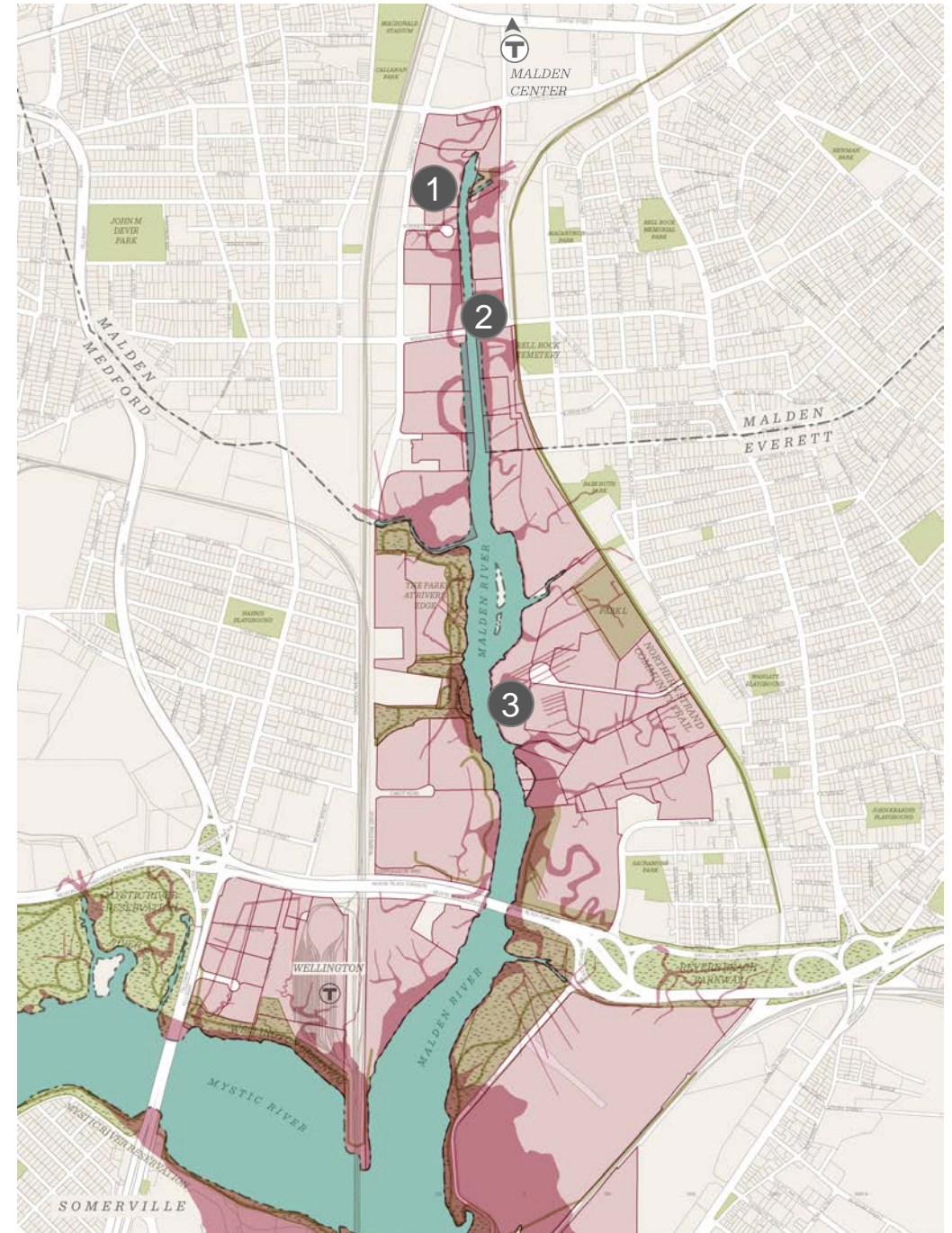


Chapter 91 and Public Access

- Chapter 91 jurisdictional lines affect all of the parcels along the Malden River,
- Thereby requiring that property owners provide public access to the waterfront on their parcels.
- Currently, many property owners provide no public access to, or along, the riverfront



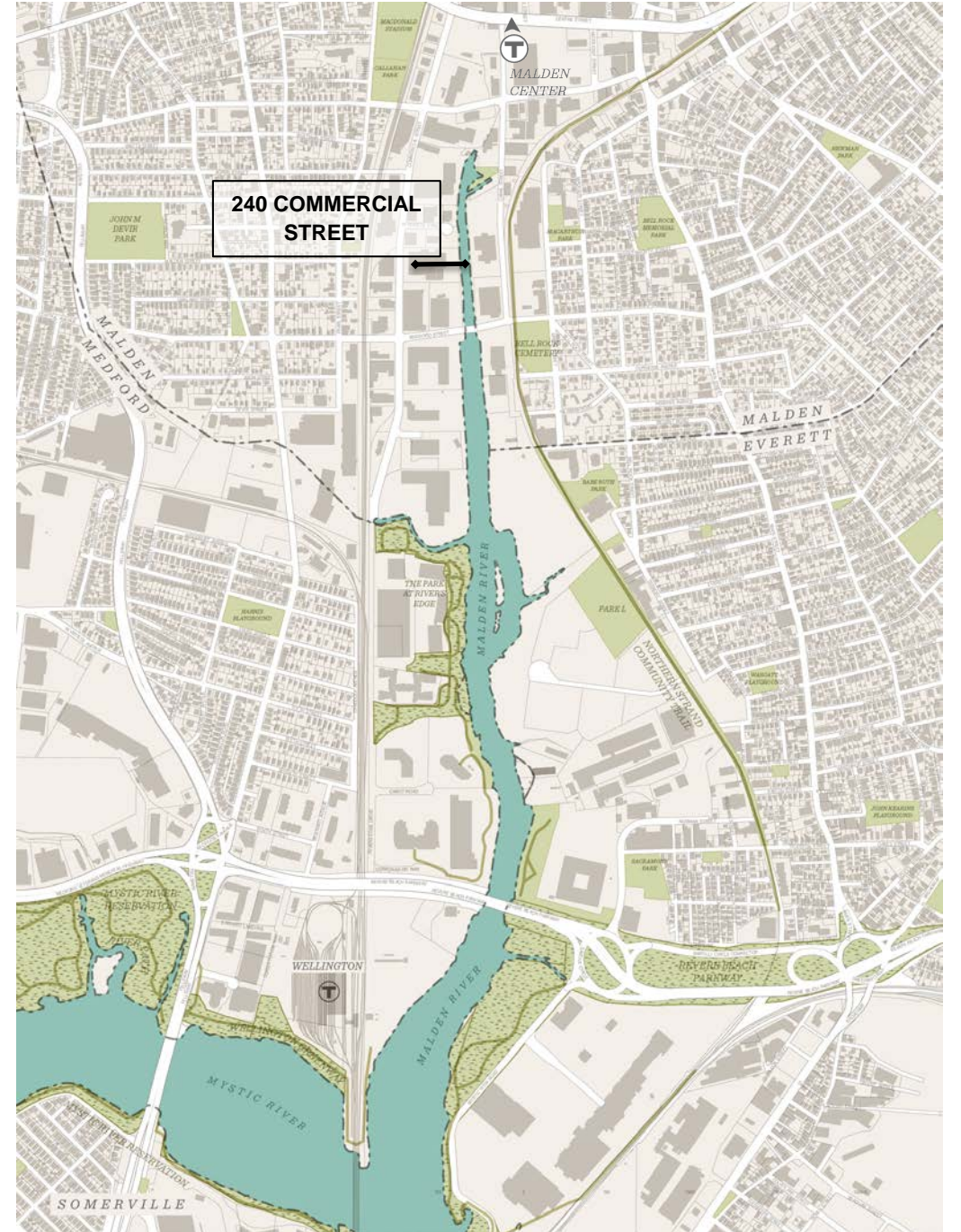
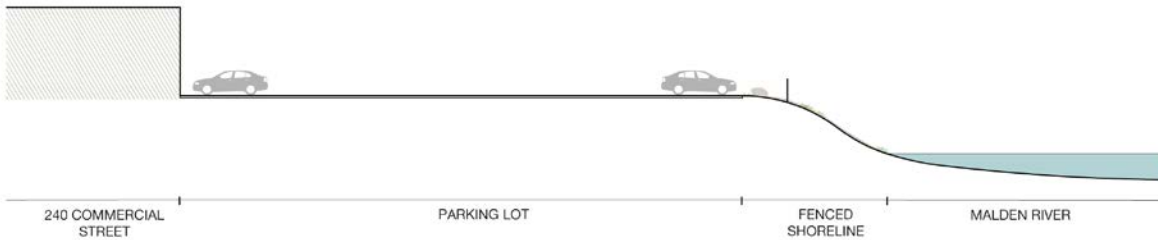
- Chapter 91 boundaries
- Affected parcels



Existing Edge Conditions



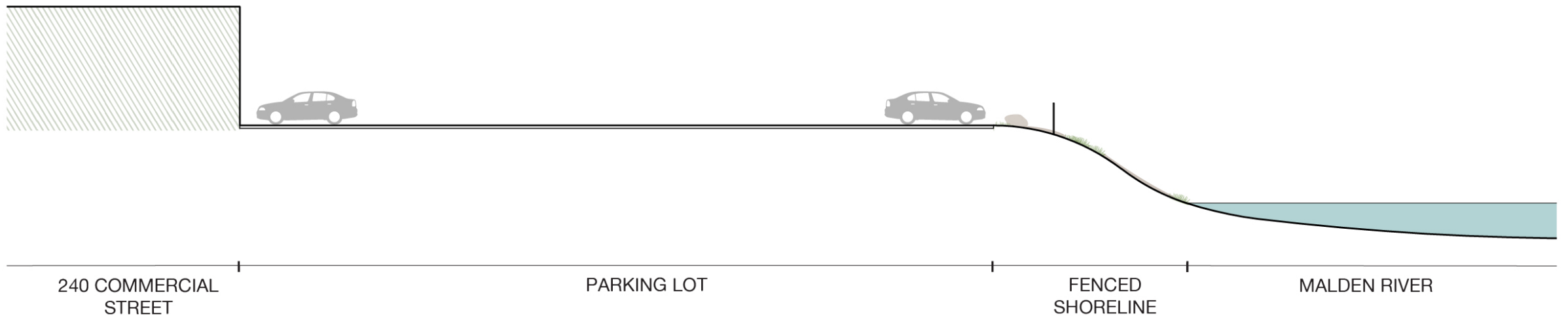
Inaccessible Riverfront with Parking at Edge – 240 Commercial Street (Piantedosi Baking Company)



Existing Edge Conditions

300 Commercial Street – Characteristics

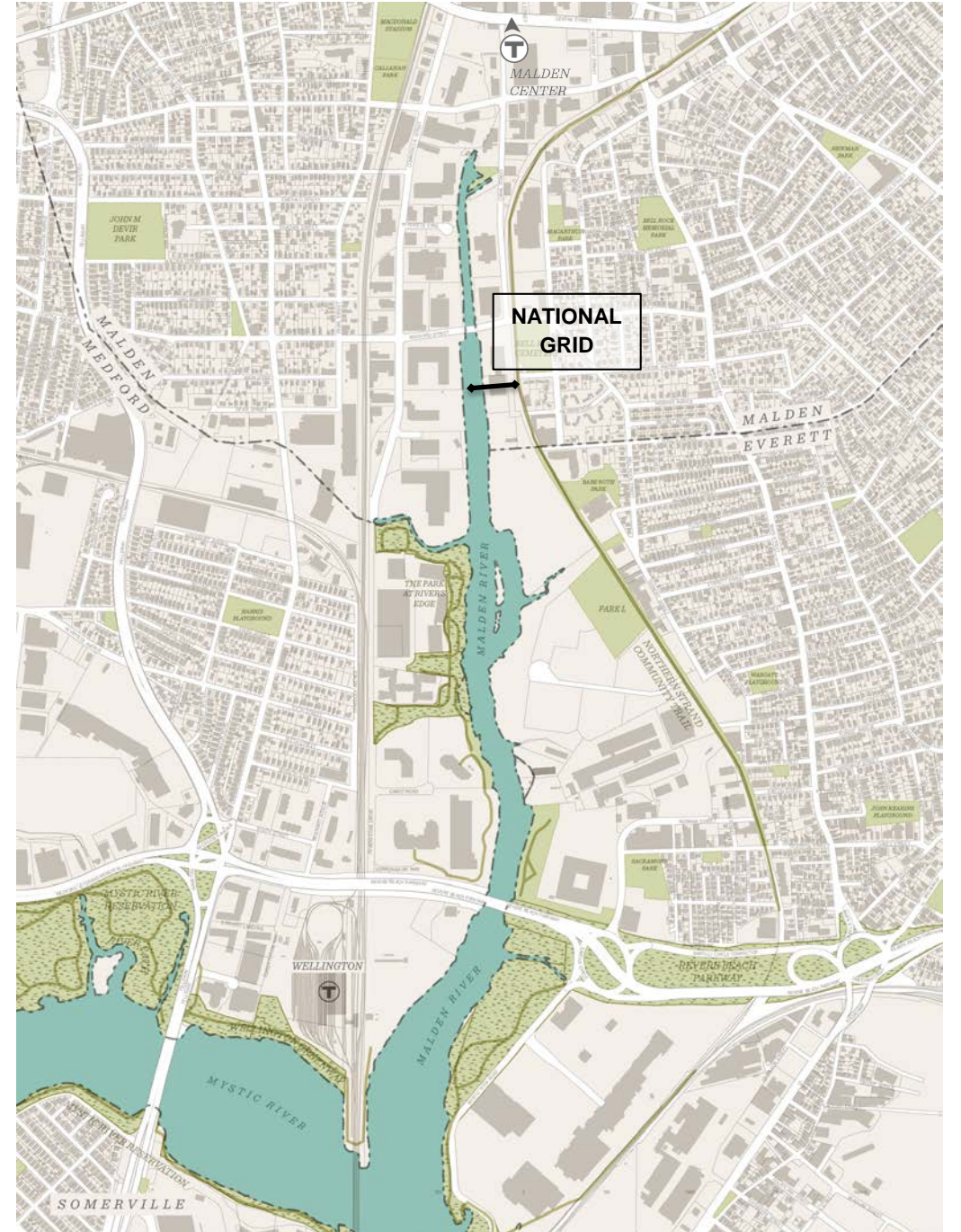
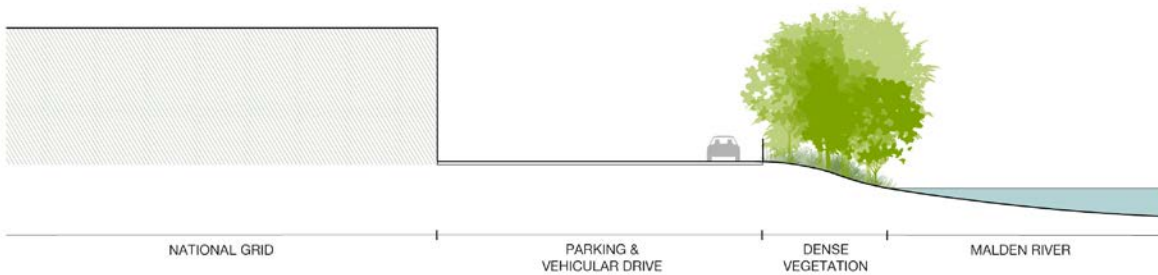
- No Public Access to Riverfront
- Brings Impervious Surfaces Close to the Water's Edge
- Poorly Maintained Slope is Prone to Erosion
- Minimal Vegetation



Existing Edge Conditions



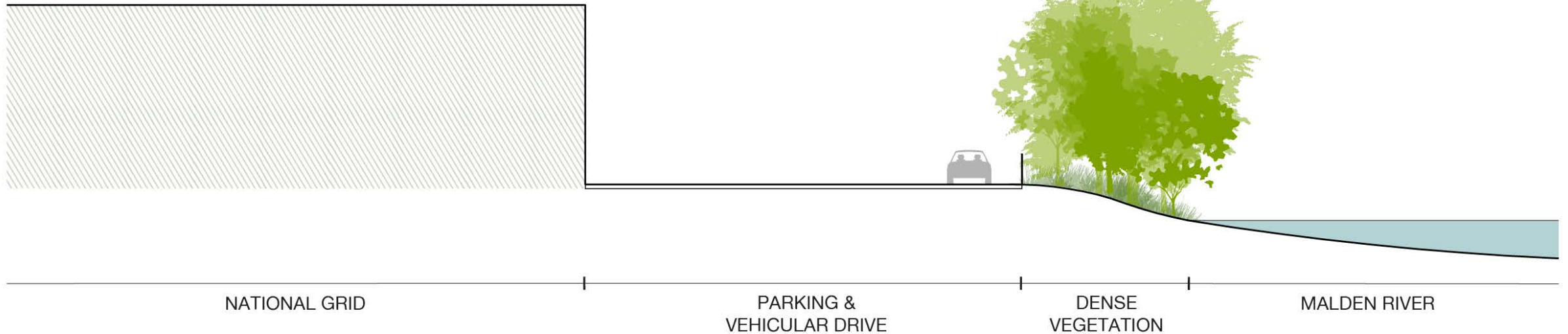
Inaccessible Riverfront with Dense Vegetation – National Grid



Existing Edge Conditions

National Grid – Characteristics

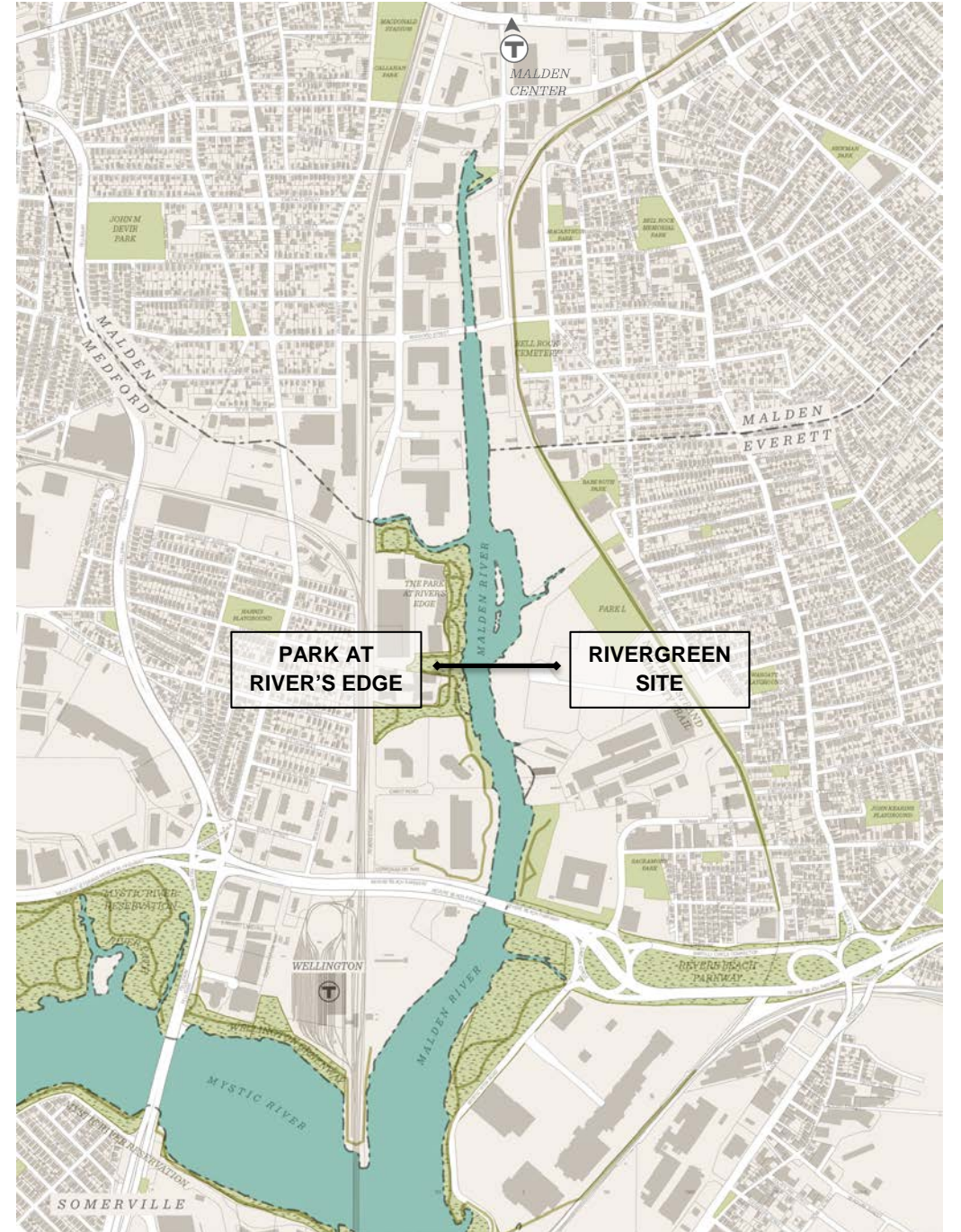
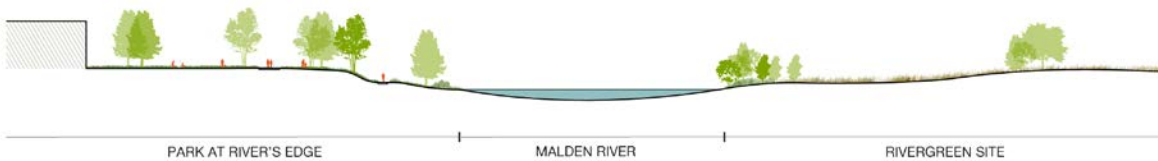
- No Public Access
- Brings Impervious Surfaces Close to the Water's Edge
- Dense Vegetation Blocks Views to River
- Mix of Native and Invasive Plant Species
- Typical of Undeveloped/Neglected Sites along the Riverfront



Existing Edge Conditions



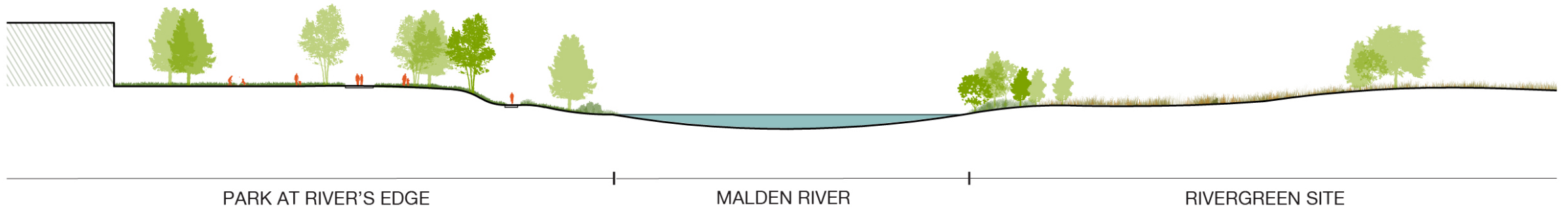
RiverGreen Site



Existing Edge Conditions

Rivergreen Site – Characteristics

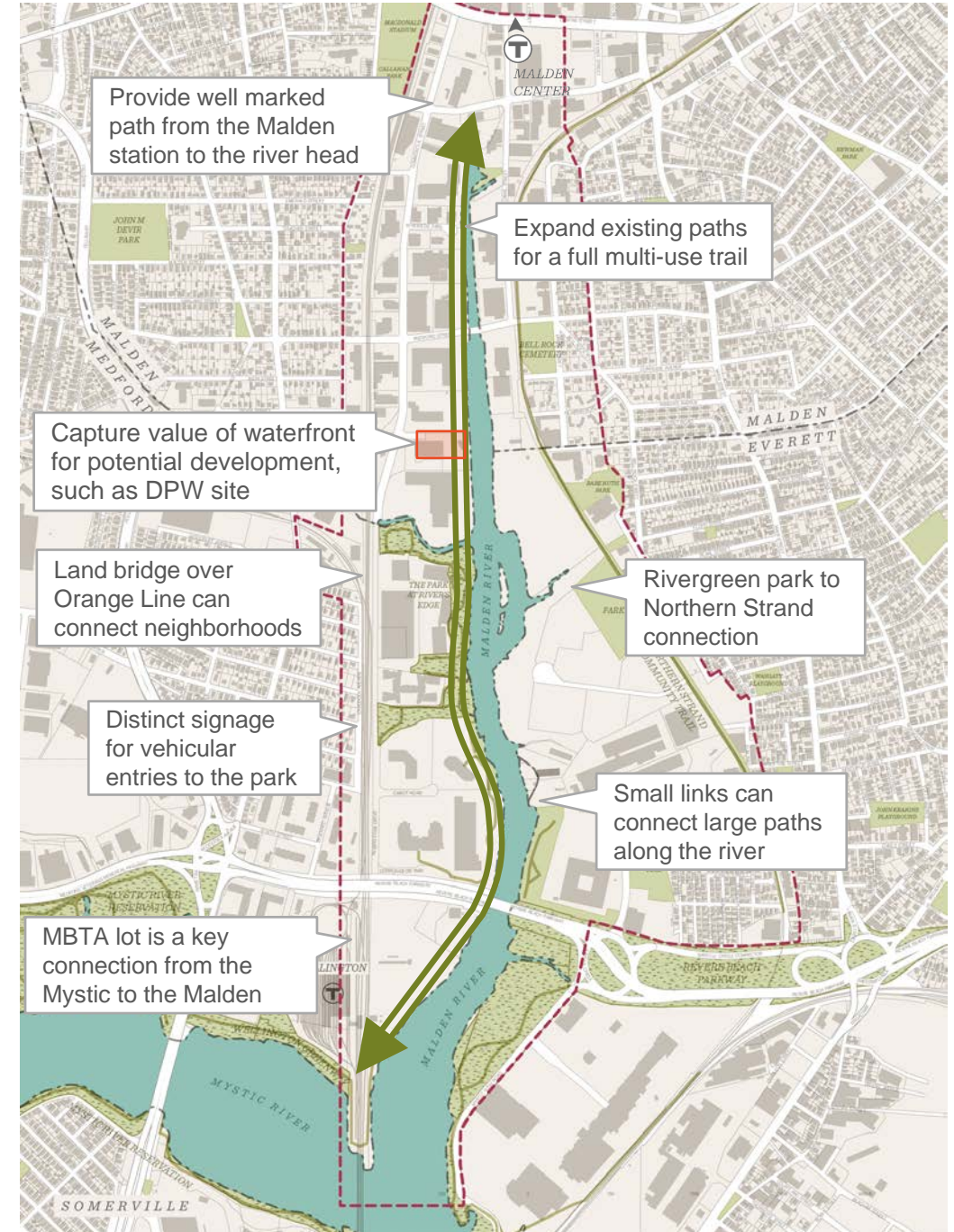
- No Public Access to Riverfront Currently from Everett
- Neglected Lot with Compacted Soils, Field Vegetation, and Native and Invasive Tree Species
- Dense Vegetation at Edge Obstructs Views to Waterfront
- Future planning includes waterfront path and parks



Challenges and Opportunities

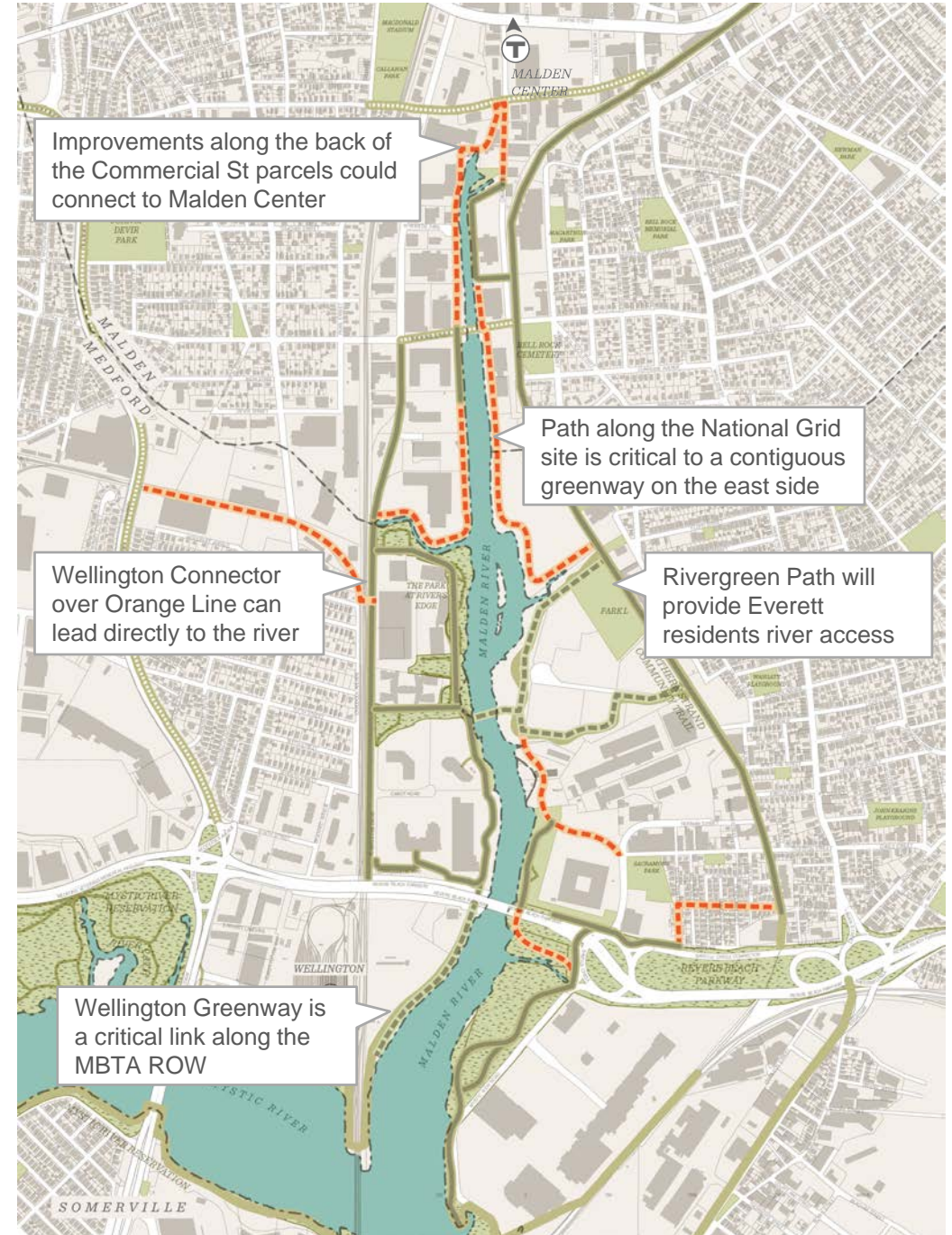
Opportunities

- New connections from the MBTA stations will provide multimodal connections for outside visitors
- Connecting the Northern Strand Trail to the Rivergreen Park will provide a direct connection to the river for local residents
- A land bridge over the Orange Line tracks will provide direct access for the Wellington neighborhood to the riverfront
- Underutilized or undeveloped sites should capture the value of waterfront access in future development.



Path Network: Existing, Planned, and Gaps

- The National Grid Site and the western edge of the river in Malden are two focus areas for connecting the greenway
- Rivergreen will be constructing a full path to the water as part of the redevelopment plan
- The Wellington Greenway is also in the planning stages and will connect under Revere Beach Parkway
- The potential pedestrian bridge from the Wellington Neighborhood could be a significant link to draw residents to the river.



Project Timeline

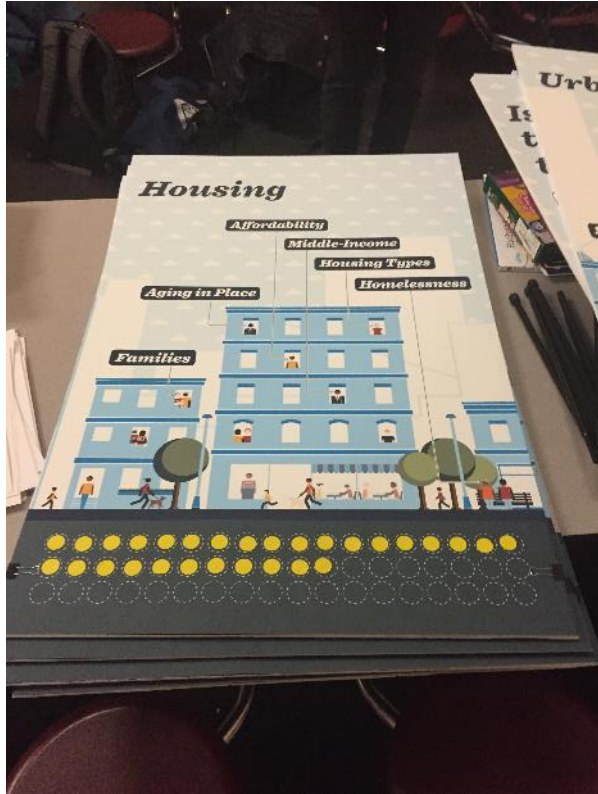
Timeline

Project Kick-Off:	June 26
Analysis, Design Development:	June - August
Outreach:	June - August
Public Meeting #2:	August
Public Meeting #3:	September
Completion of Plan:	September



Aerial views of Malden River looking south towards Boston (top) and north to Malden (bottom)

Group Activity: Conversation and open house comments



Voting with stickers on the important issues



Post-It boards for idea generation



Small group map annotations and discussion

