

MALDEN RIVER  
**GREENWAY**

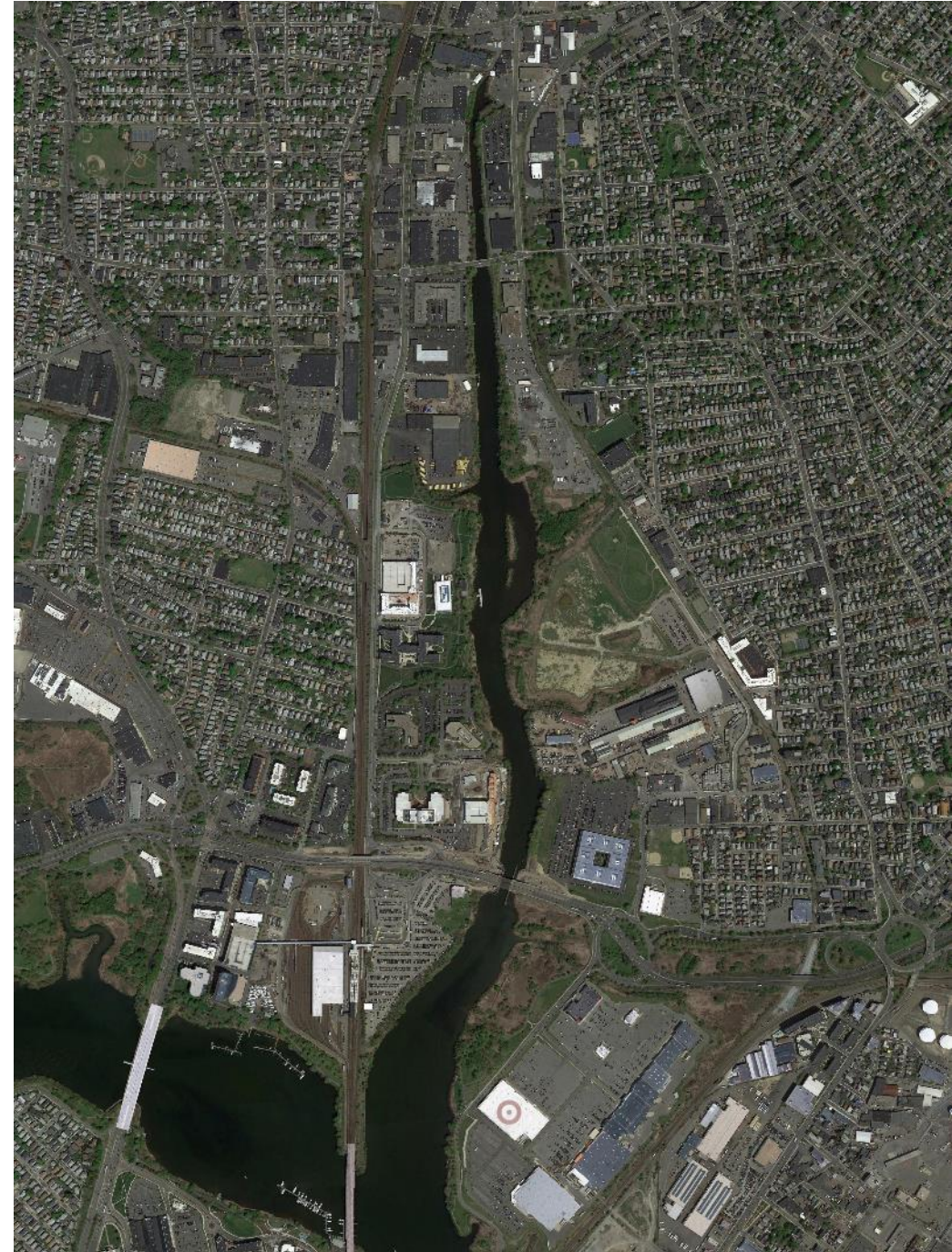
# Public Meeting #2 Agenda

- 6:00-6:30 Open House: Tufts Boathouse and Docks
- 6:30-6:50 Welcome
- 6:55-7:20 Presentation
- 7:25-8:00 Small Group Tables with Designs/Maps
- 8:00 Wrap Up

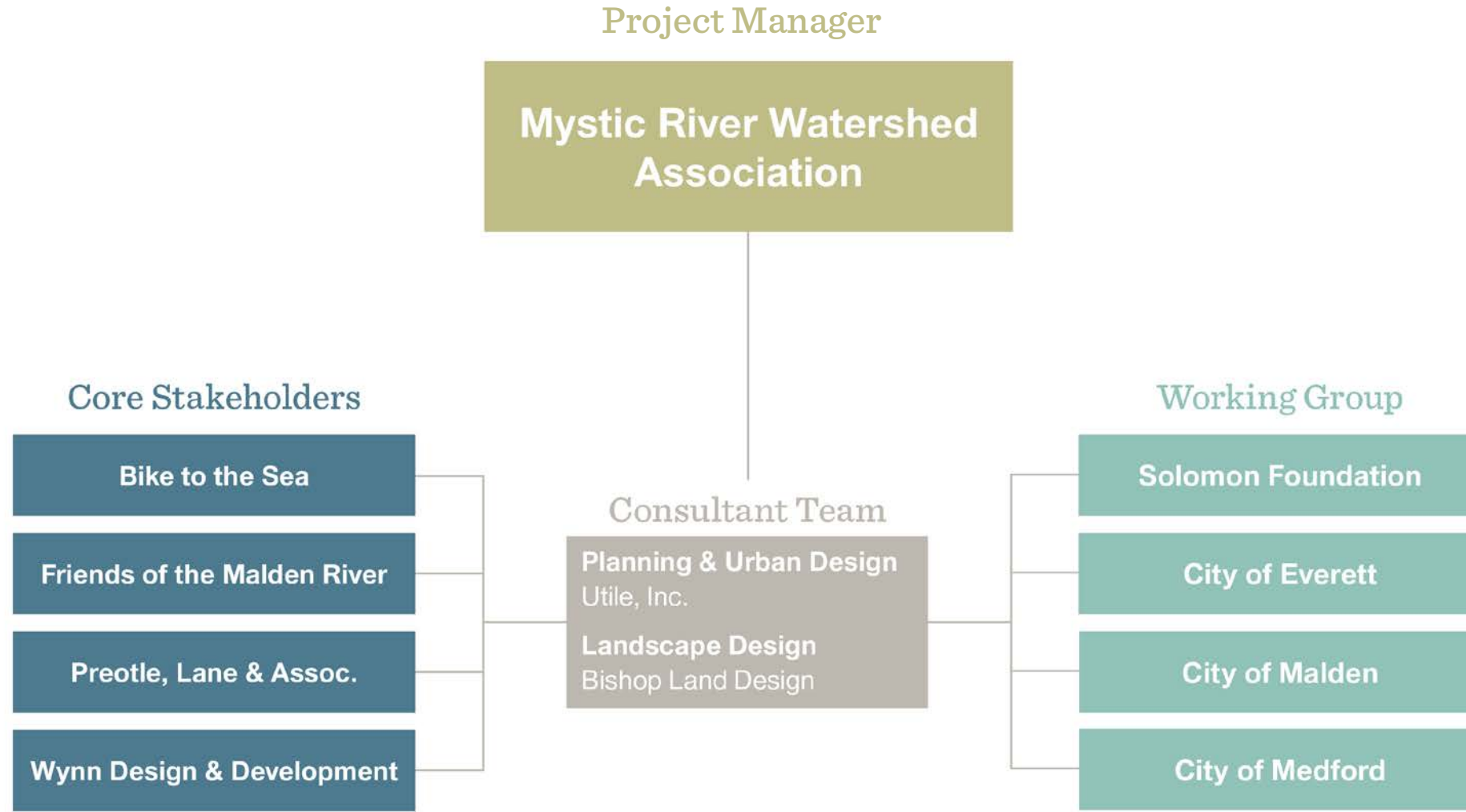
## Attendees of Note

Mayor DeMaria, Burke and Christenson  
MassDOT, DCR, DEP, National Grid

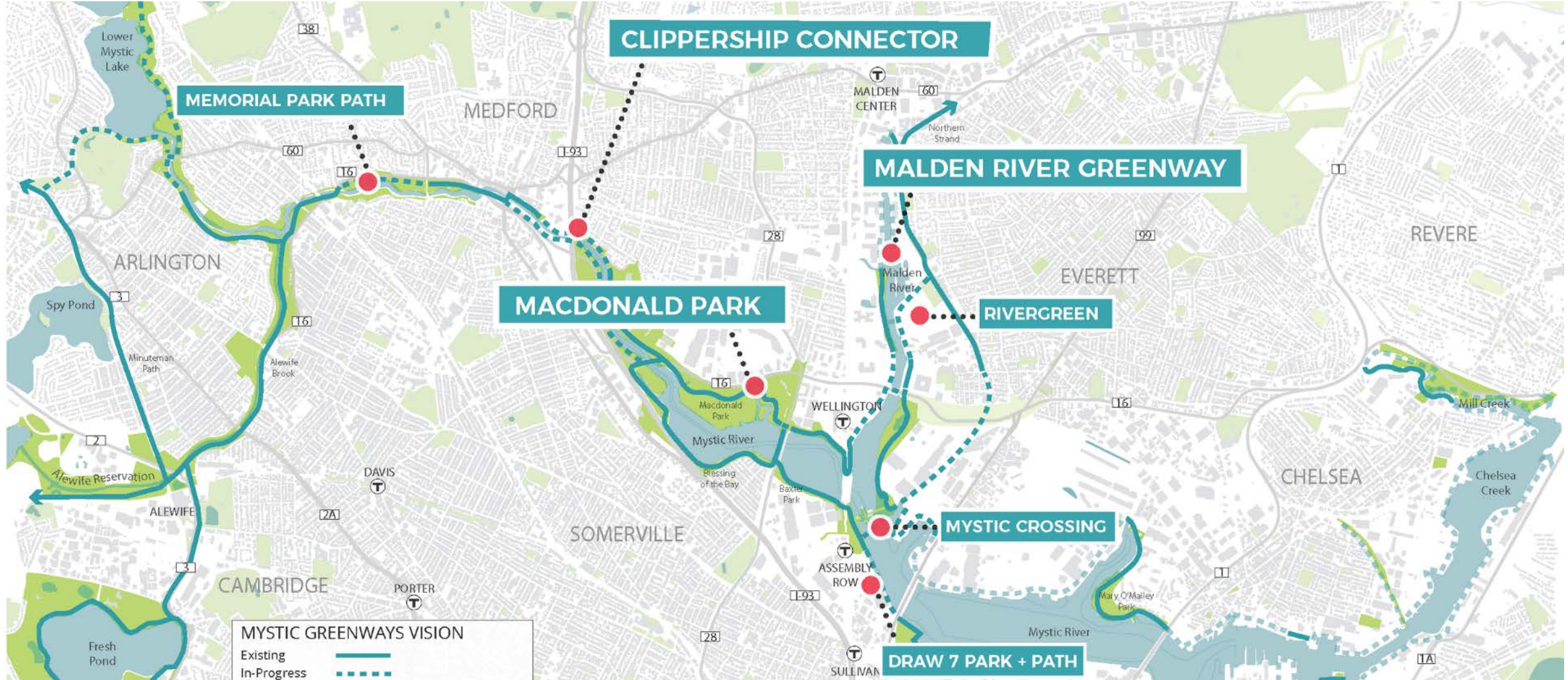
Aerial of the Malden River



# Organizational Chart



# Mystic River Greenways



# Project Timeline and Scope

## A Phase Two (July-August)

### 1 Master Plan for the Malden River Greenway

- Production of Greenway Master Plan allowing for neighborhood connectivity, new path alignments and future uses along the Greenway.

### 2 Community Engagement

- Presentation of Master Plan alternatives incorporating early community feedback and identifying key projects or connections
- Riverwalk: Organize a community river walk to explore the future paths and points of access to the riverfront.

# Project Timeline and Scope

## A Phase Three (August-Sept)

### 1 Conceptual Area Plans

- Detailed studies of focus areas recommending trail character, detailed alignments, bridges and community programming

### 2 Community Engagement

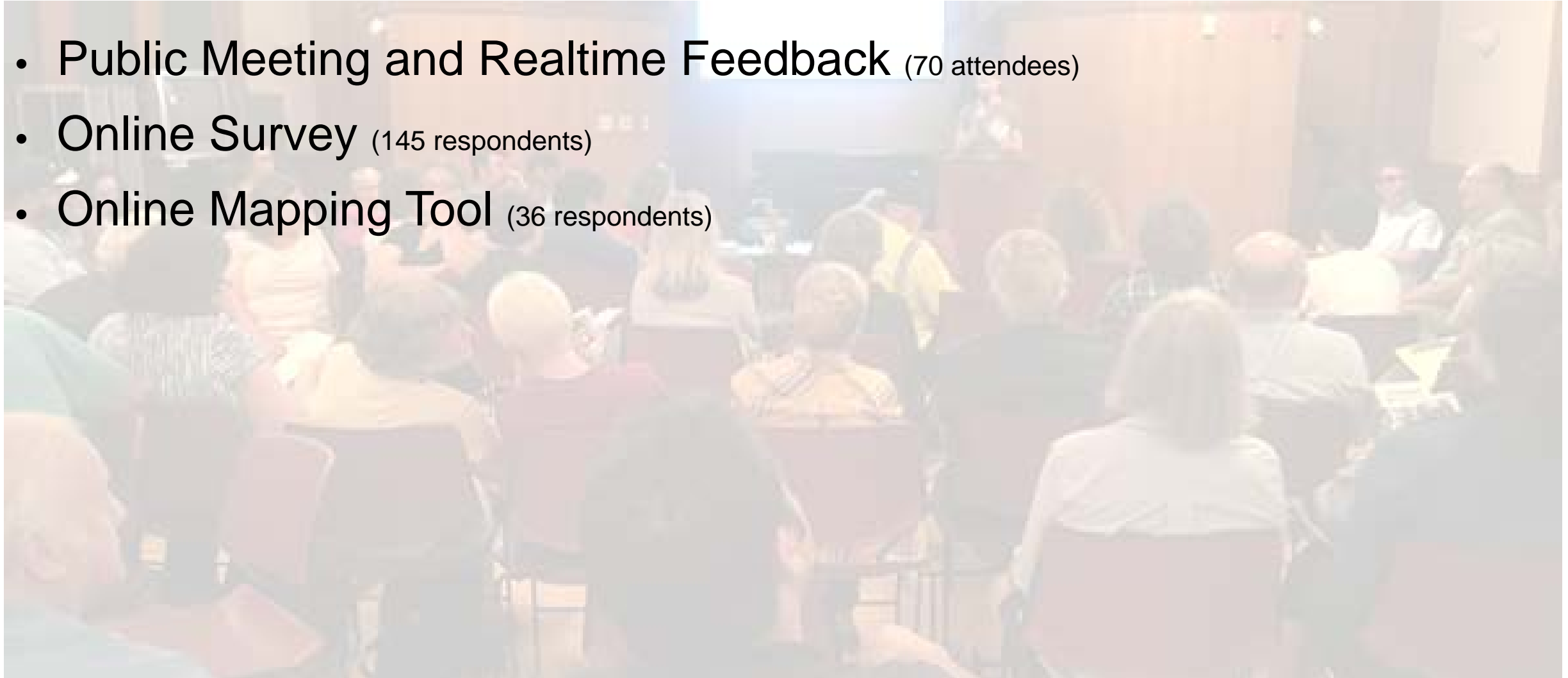
- Final presentation of Malden River Master Plan and Focus Area Studies

# Community Engagement Feedback



# Community Engagement: Venues for Public Input

- **Public Meeting and Realtime Feedback** (70 attendees)
- **Online Survey** (145 respondents)
- **Online Mapping Tool** (36 respondents)





# Community Engagement: Public Meeting

- Public Meeting and Realtime Feedback
  - Open house style meeting with activity boards
  - Presentation of the project, study area analysis, opportunities and constraints
  - Group breakout conversations and feedback



Public Meeting at the Malden Library



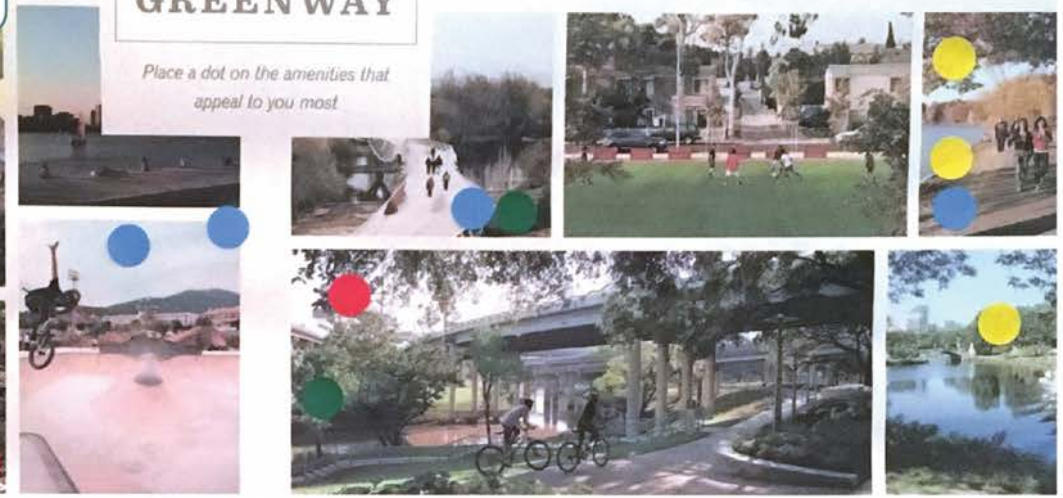


# community and social gathering

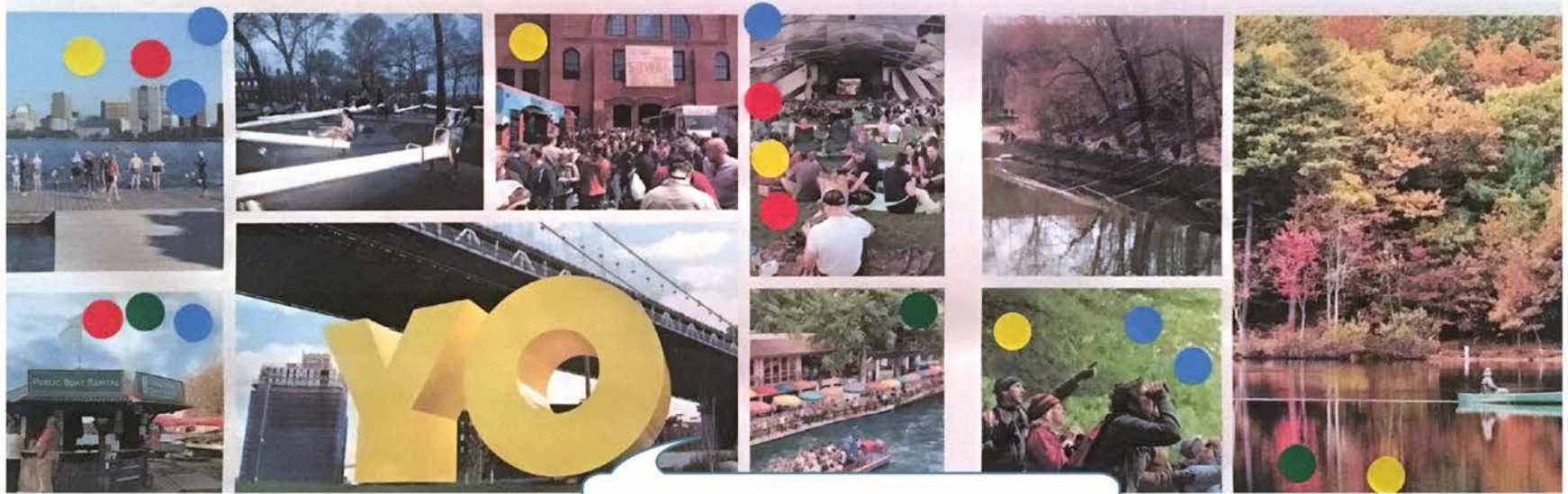


## MALDEN RIVER GREENWAY

Place a dot on the amenities that appeal to you most



## Recreation and Mobility



# public programming

# Community Engagement: Public Meeting

## KEY THEMES FROM PUBLIC MEETING JUNE 26, 2017

### EXISTING RIVER USES

- Can't get there! (except at River's Edge, Comcast building, Medford St Bridge)
- Run (but broken path system makes it difficult)
- Bike (mostly Northern Strand which is disconnected from the river)
- Boating (mostly crew, but hard to view from the land)
- Nearby destinations (ie- Night Shift in Everett, but not connected to river)

### CHARACTER OF THE MALDEN RIVER

- Channelized, invisible, urban, industrialized, paved over, connects two T stations
- Peaceful and quiet; provides access to nature (birds) and relief from the noise and traffic of the cities
- Connects three cities, a unifying element

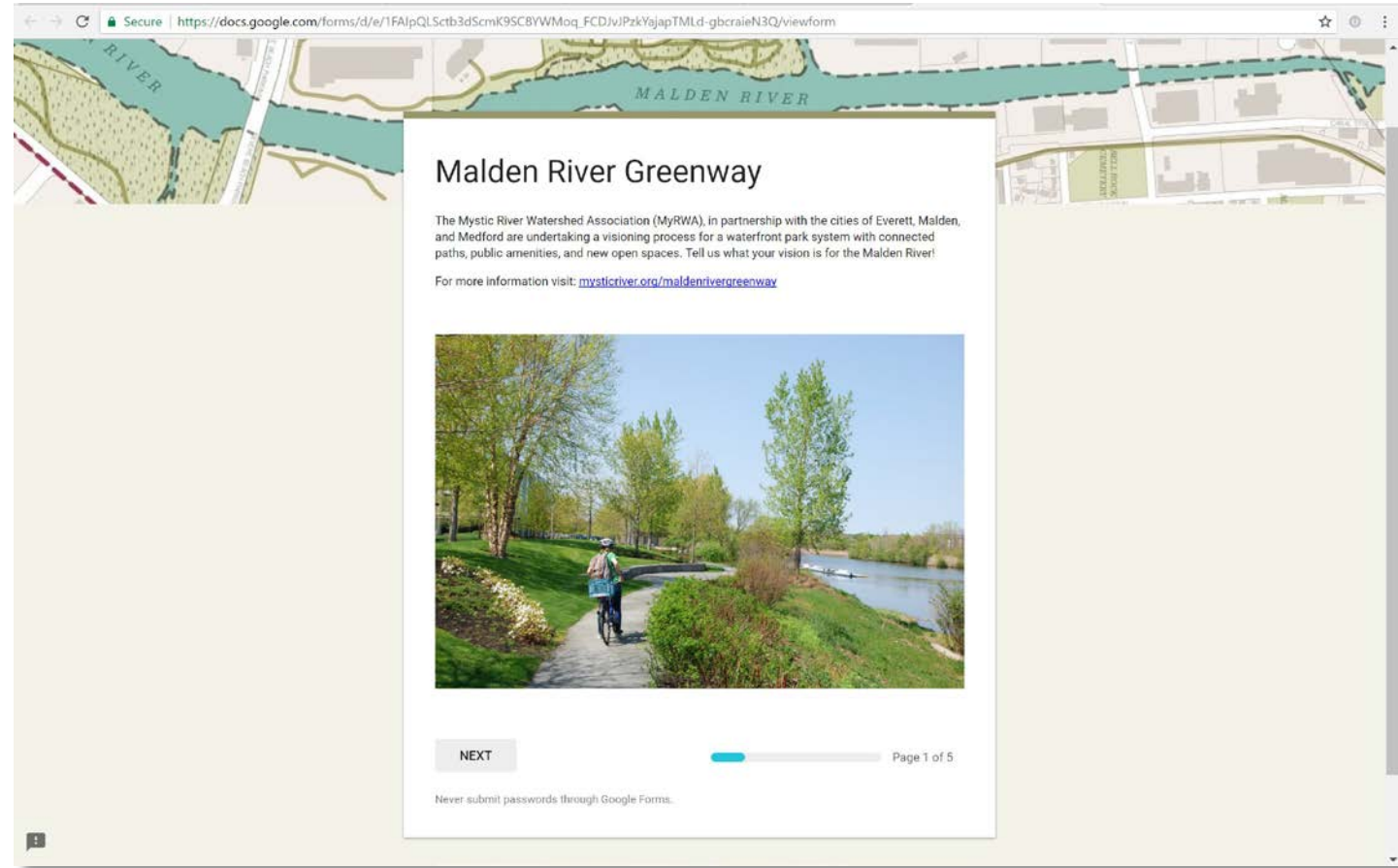
### NEEDS/DESIRES FOR IMPROVEMENT

- Clean-up the river, and keep it clean; (deal with trash and water quality/sediments)
- Improve connectivity for walking/biking and add a bridge across
- More wildlife habitat/natural areas
- More and better boating options
- Create programming (public art, markets, festivals, group exercise)

# Community Engagement: Online Survey

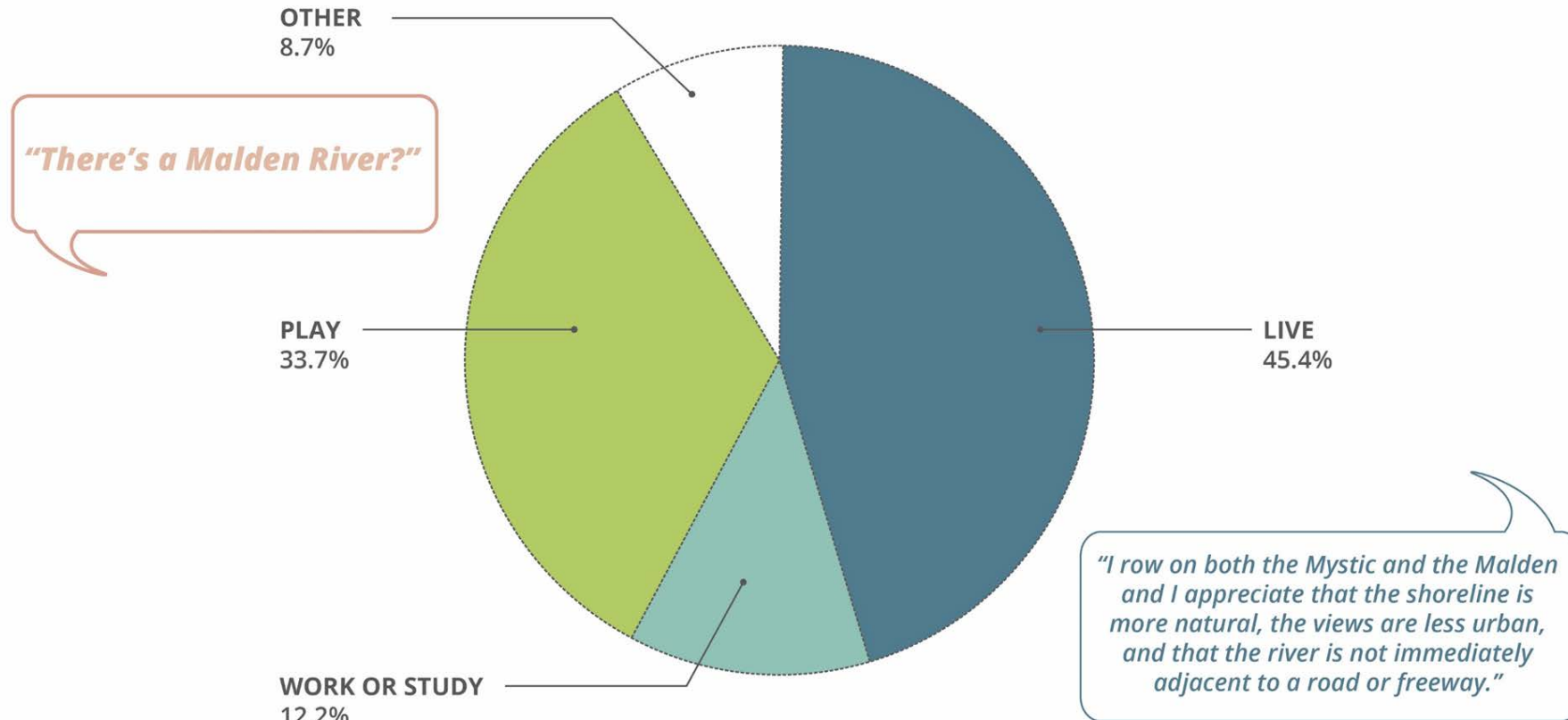
## What we heard!

- Phrases for vision statement
- Most important factors for vision:
  - Access
  - Community Uses
  - Connectivity
- Information about respondent
  - What they do on the riverfront
  - How they access the river
  - How they get to the river (drive, walk, bike, transit)
  - How often they visit the Malden River?
  - User Profile (age/gender/race)
- General Comments



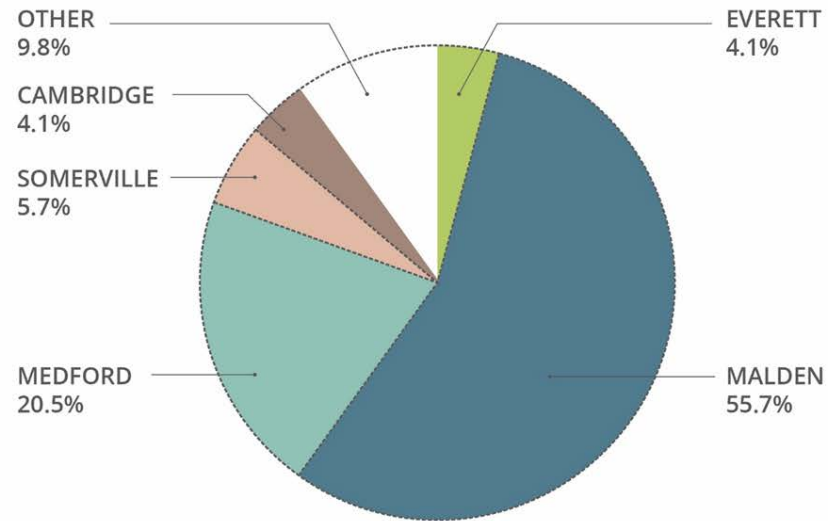
# Community Engagement: Online Survey

DO YOU LIVE, WORK, STUDY, OR PLAY NEAR THE MALDEN RIVER?

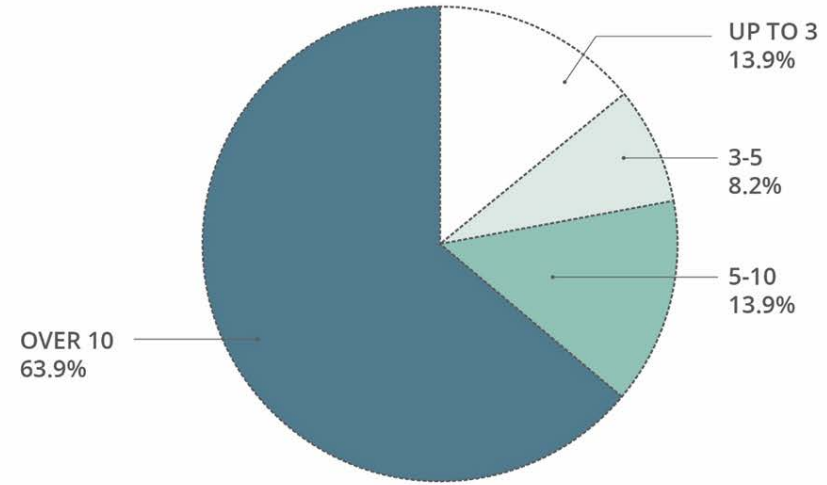


# Community Engagement: Online Survey

**WHERE DO YOU LIVE?**

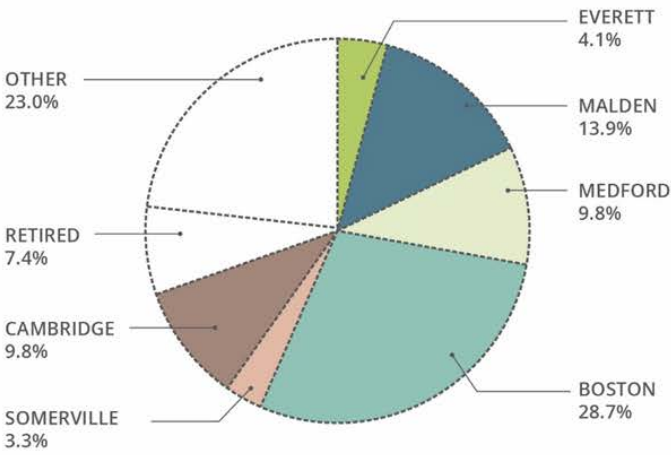


**FOR HOW MANY YEARS HAVE YOU LIVED HERE?**

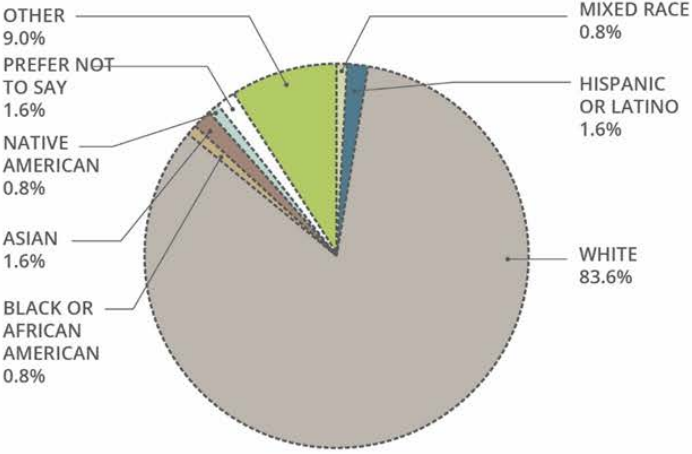


# Community Engagement: Online Survey

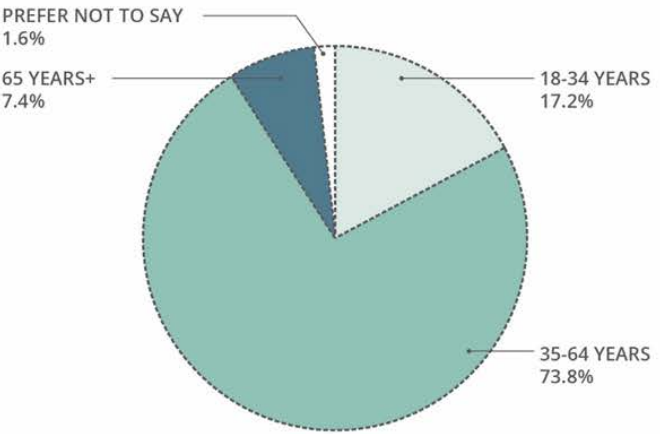
**WHERE DO YOU WORK?**



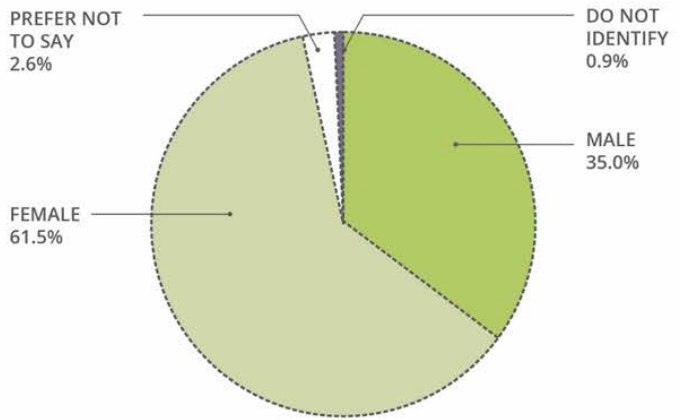
**RACIAL AND ETHNIC IDENTITY**



**AGE**

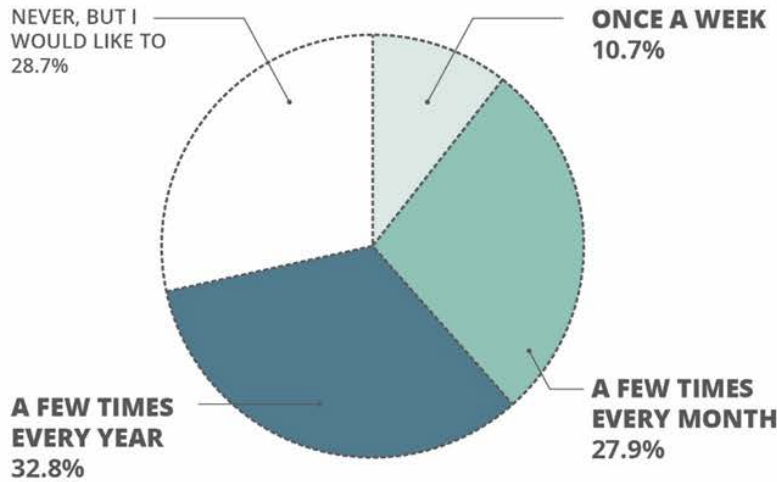


**GENDER**



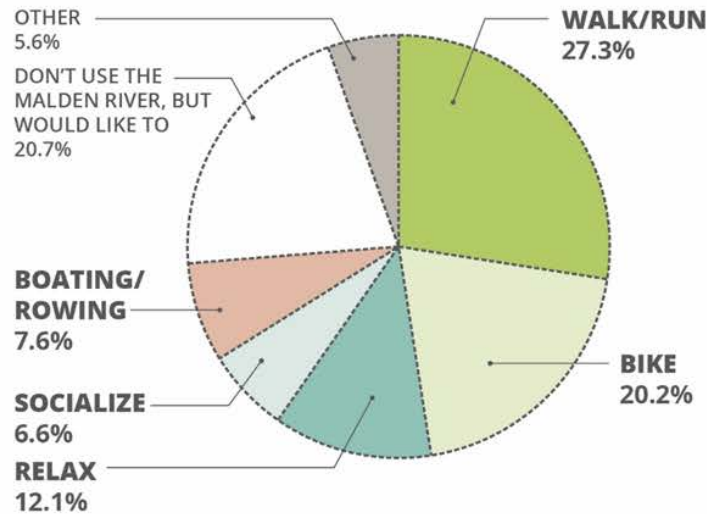
# Community Engagement: Online Survey

**HOW OFTEN DO YOU GO TO THE MALDEN RIVER?**



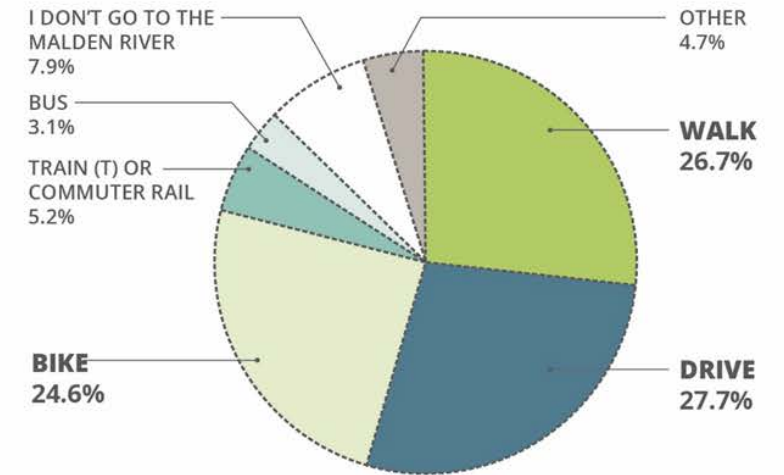
**HOW DO YOU USE THE MALDEN RIVER?**

(multiple responses allowed)



**HOW DO YOU GET TO THE MALDEN RIVER?**

(multiple responses allowed)

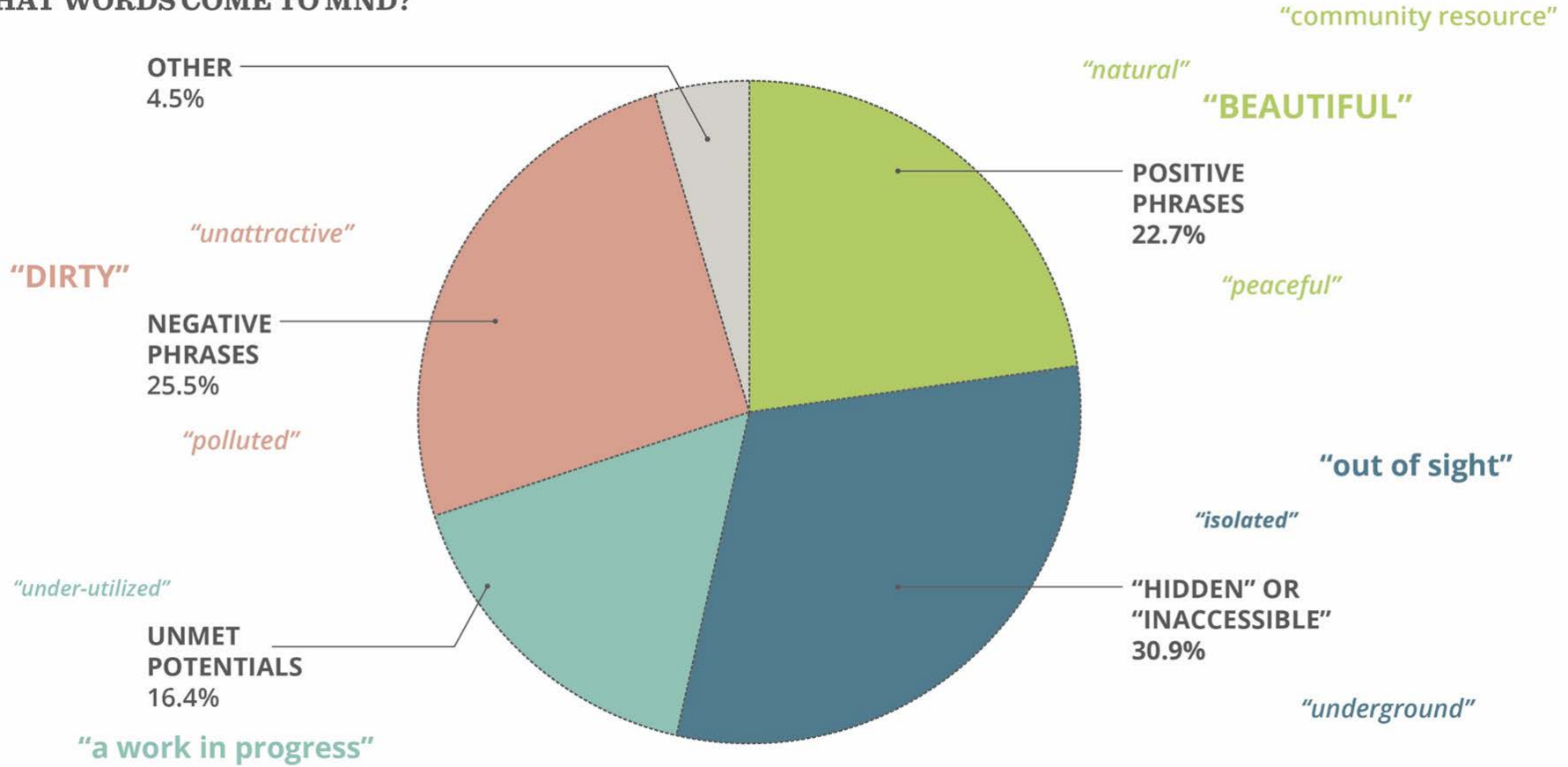


*"I have relatives in the old Bell Rock Cemetery and as I walk along the river I often wonder what their experience along the banks of the river was like in their time."*



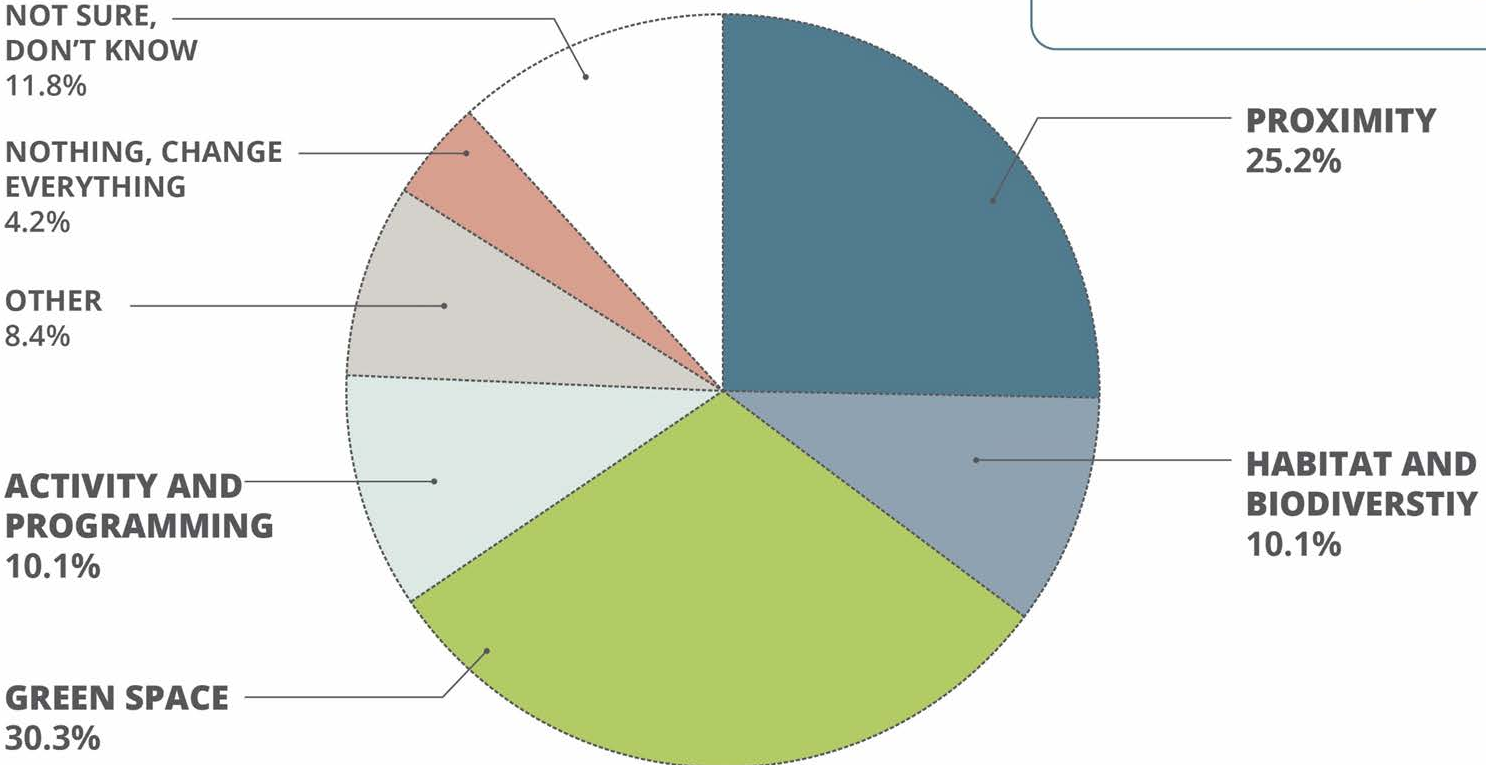
# Community Engagement: Online Survey

WHEN YOU THINK ABOUT THE MALDEN RIVER TODAY, WHAT WORDS COME TO MIND?



# Community Engagement: Online Survey

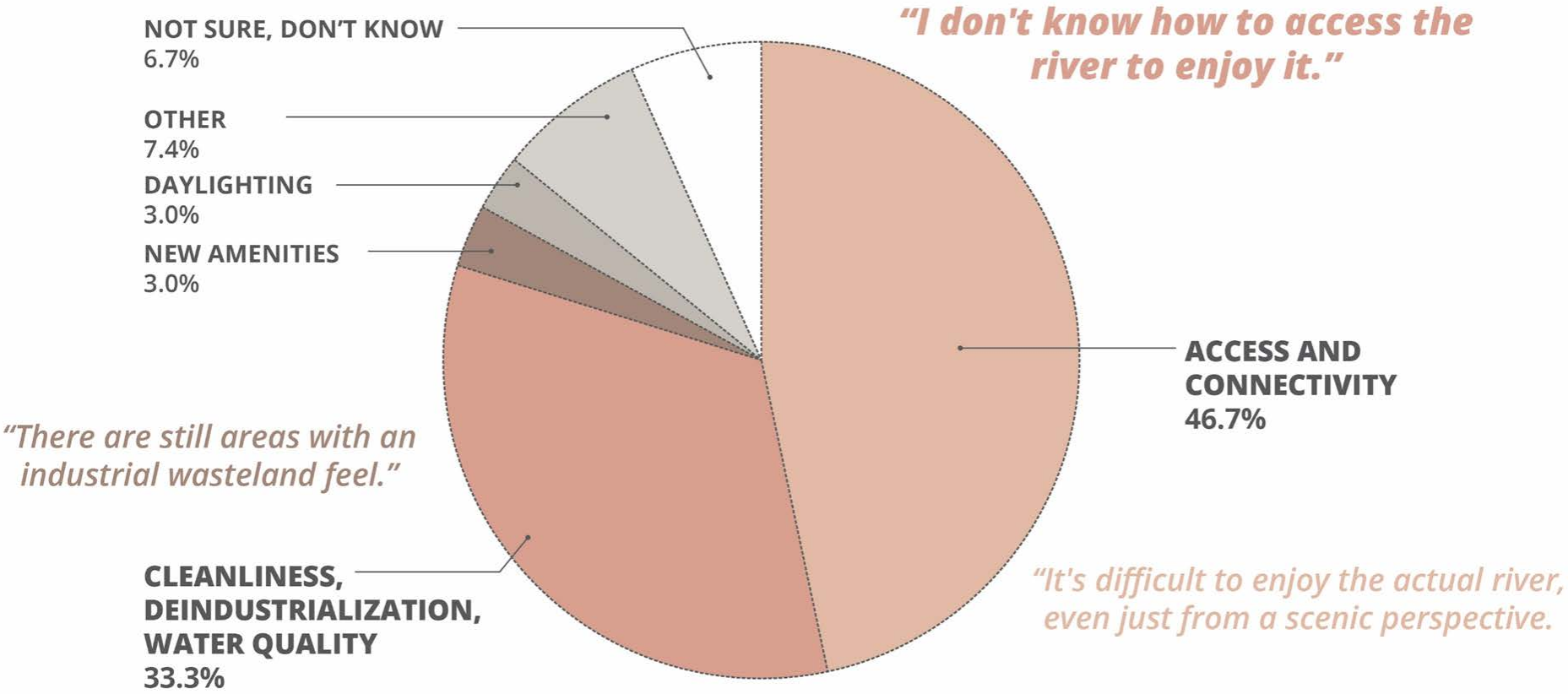
**NAME A FEW THINGS YOU LOVE  
AND WOULD KEEP THE SAME ABOUT THE MALDEN RIVER.**



*"We're lucky to have a river, lets take advantage of it!"*

# Community Engagement: Online Survey

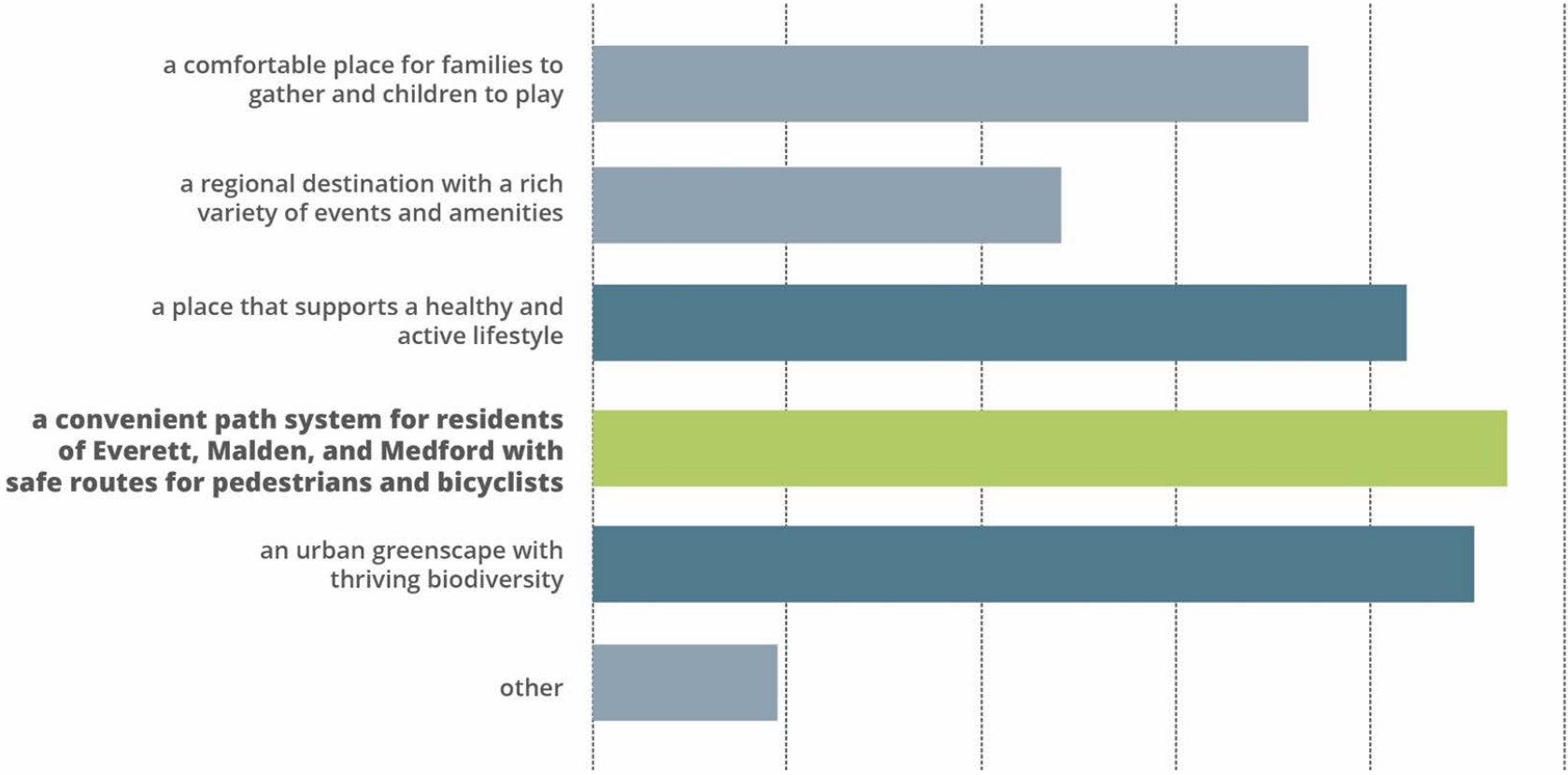
**NAME A FEW THINGS YOU DISLIKE AND WOULD CHANGE ABOUT THE MALDEN RIVER.**



# Community Engagement: Online Survey

QUESTIONS

**“I ENVISION THE MALDEN RIVER TO BE...”**  
(multiple responses allowed)



# Community Engagement: Online Survey

WHICH OF THESE FEATURES WOULD YOU BE EXCITED TO SEE ALONG THE MALDEN RIVER?

**MOST EXCITED**



**EXCITED**



“...a place where crew teams would draw spectators and revenue for the City”

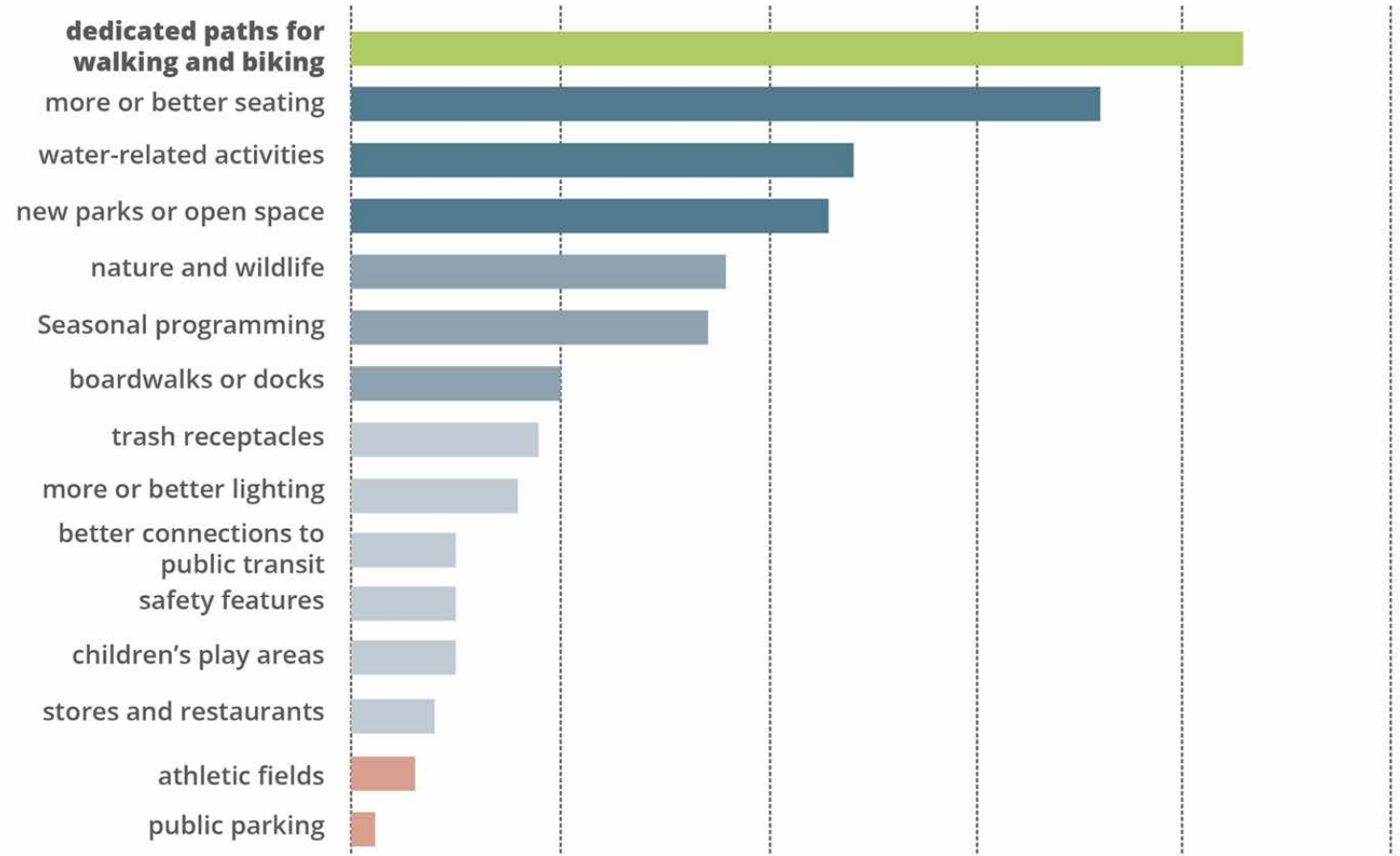
**LEAST EXCITED**



*“...a resource that is respected and appreciated by the community!”*

# Community Engagement: Online Survey

**WHAT AMENITIES WOULD YOU LIKE TO SEE ALONG THE MALDEN RIVER?**  
MALDEN OPEN SPACE SURVEY DATA



Responses are from the Malden Open Space Survey

# Community Engagement: Mapping Survey

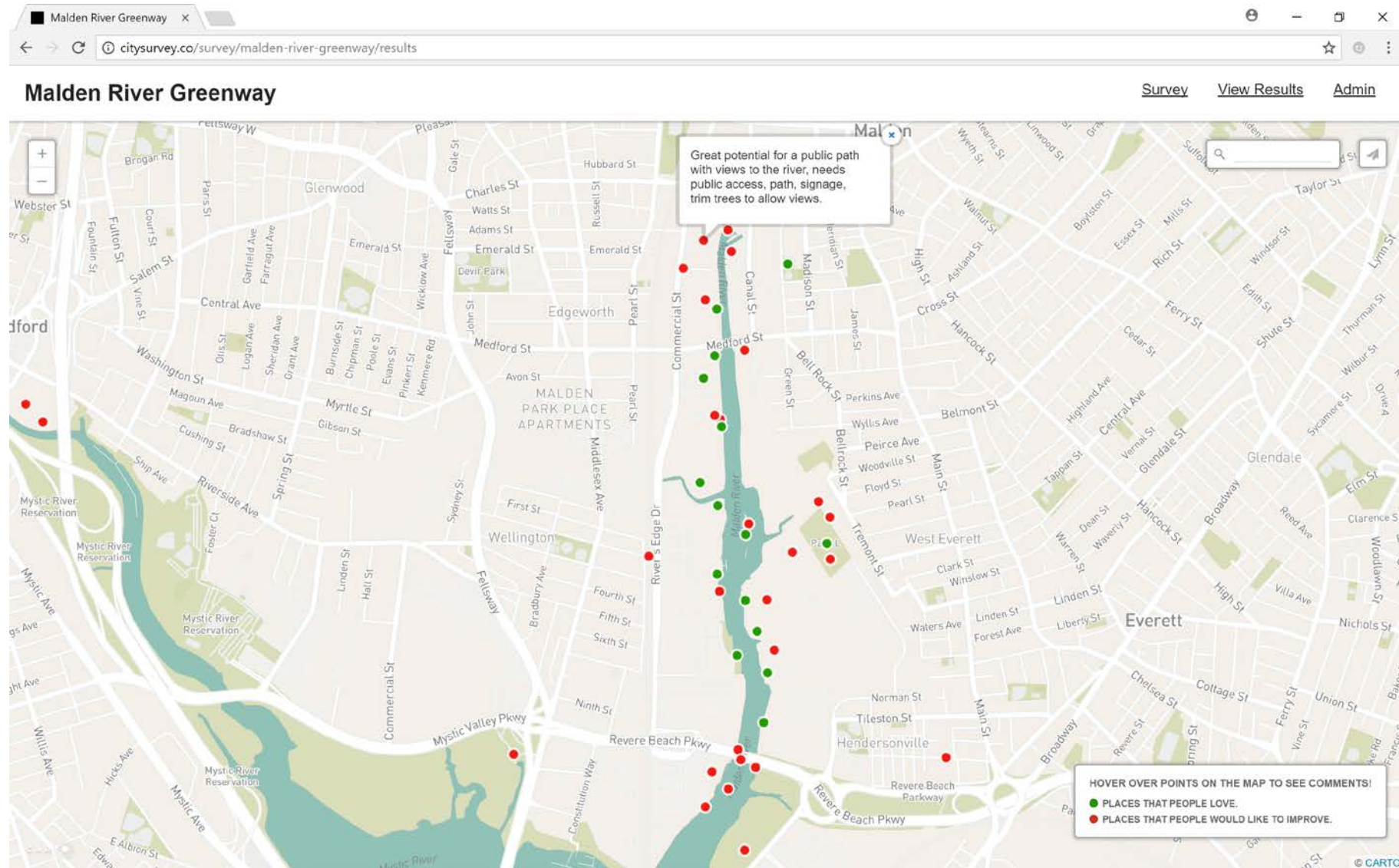
**Tool ties responses to a point on the map**

**Places that people love...**

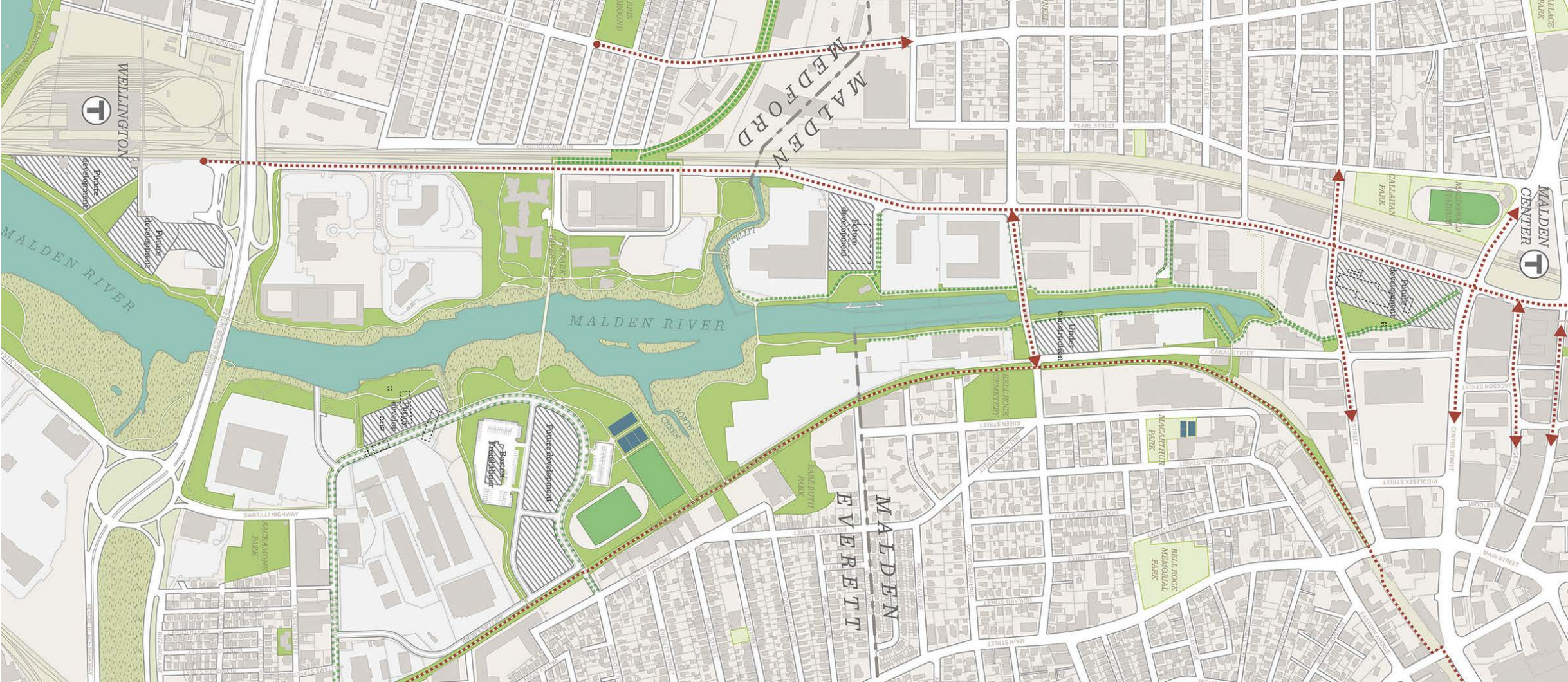
*“beautiful, well-maintained landscape - all waterfront parks should be like this one!”*

**Places that people would like to improve...**

*“remove tires and possibly submerged trucks”*



# Framework Plan





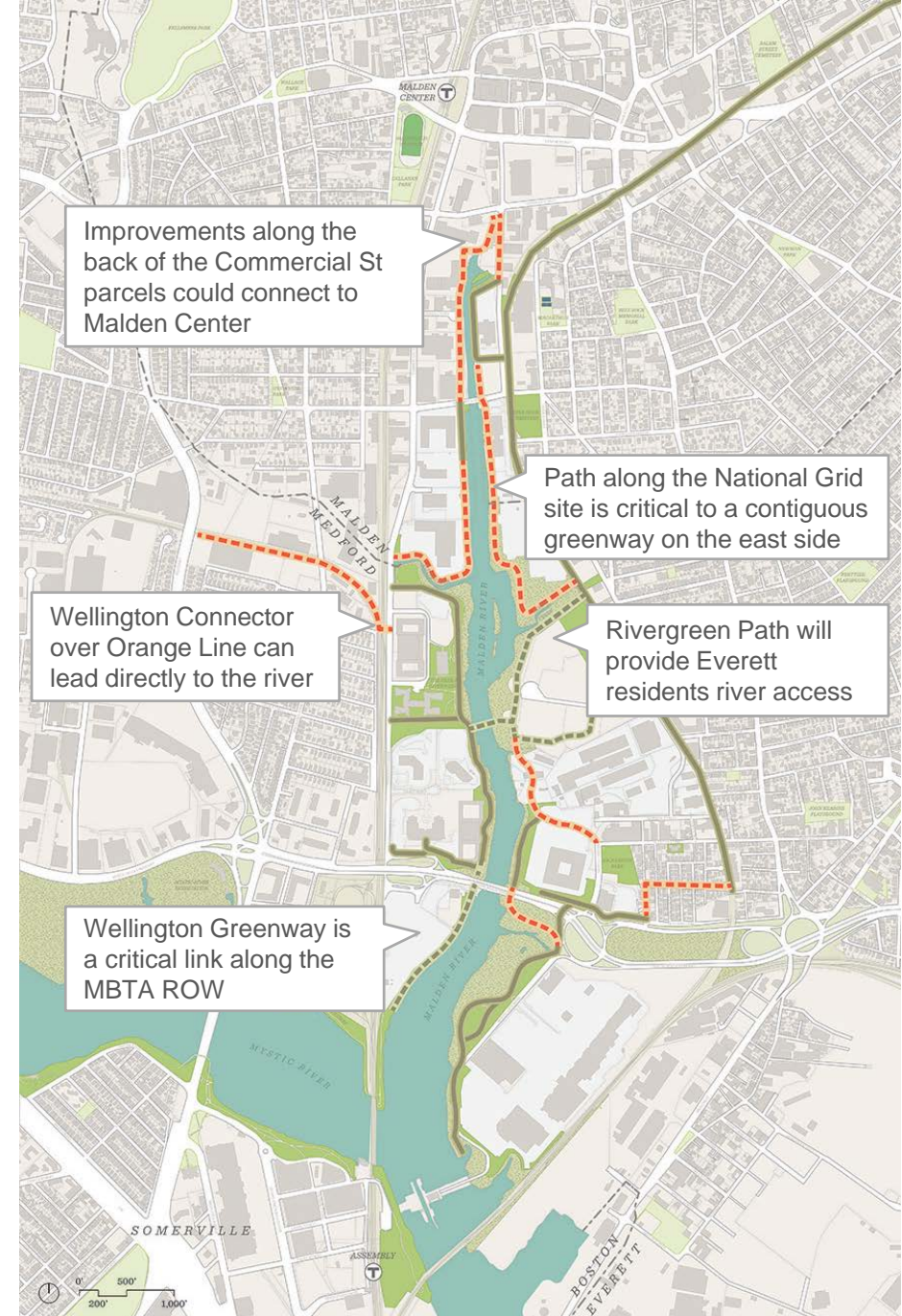
# Opportunities

- New connections from the MBTA stations will provide multimodal connections for outside visitors
- Connecting the Northern Strand Trail to the Rivergreen Park will provide a direct connection to the river for local residents
- A land bridge over the Orange Line tracks will provide direct access for the Wellington neighborhood to the riverfront
- Underutilized or undeveloped sites should capture the value of waterfront access in future development.



# Path Network: Existing, Planned, and Gaps

- The National Grid Site and the western edge of the river in Malden are two focus areas for connecting the greenway
- Rivergreen will be constructing a full path to the water as part of the redevelopment plan
- The Wellington Greenway is also in the planning stages and will connect under Revere Beach Parkway
- The potential pedestrian bridge from the Wellington Neighborhood could be a significant link to draw residents to the river.



# Framework Plan Design Objectives

## Planning and Design Objectives

1. Design a safe, convenient and accessible path system (walking, running, biking) for local residents and visitors
2. Build an urban greenspace with thriving biodiversity
3. Promote a healthy lifestyle through active design and open space programming
4. Create a green open space network that provides a key link in a larger regional greenway system



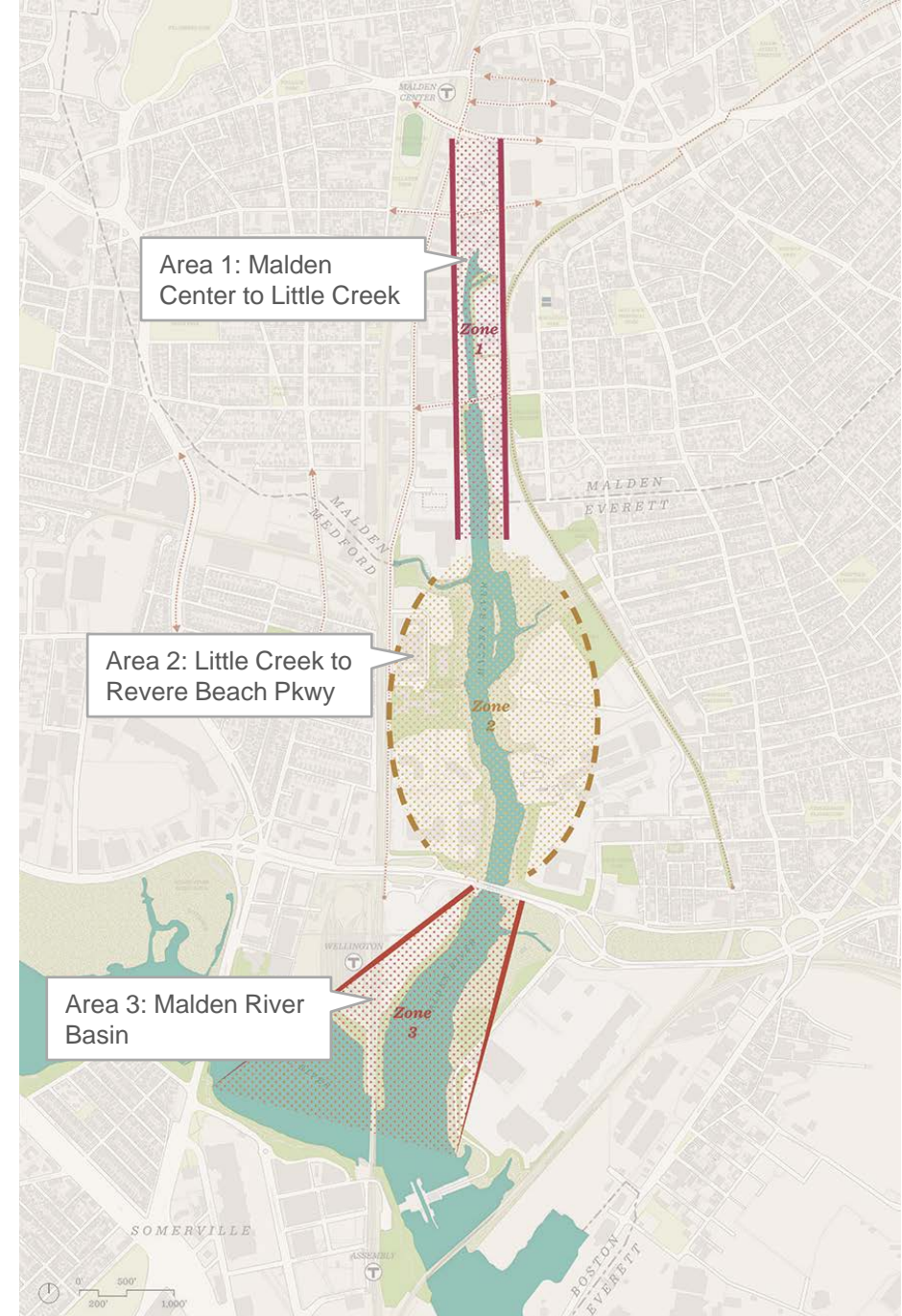
# Framework Plan Character Areas

## Three Character Zones

The Malden River Greenway can be defined by three character zones that offer different waterfront and open space experiences.

This variety of conditions lends itself to

- Capturing unique natural conditions and the restoration of degraded areas,
- Evolving landscape concepts for each area,
- Programming alternatives and distinct recreational uses
- Creating a physical continuity in the greenway system, but with a consistent



# Framework Plan Character Areas

## Three Character Zones

### Area 1: Malden Center to Little Creek

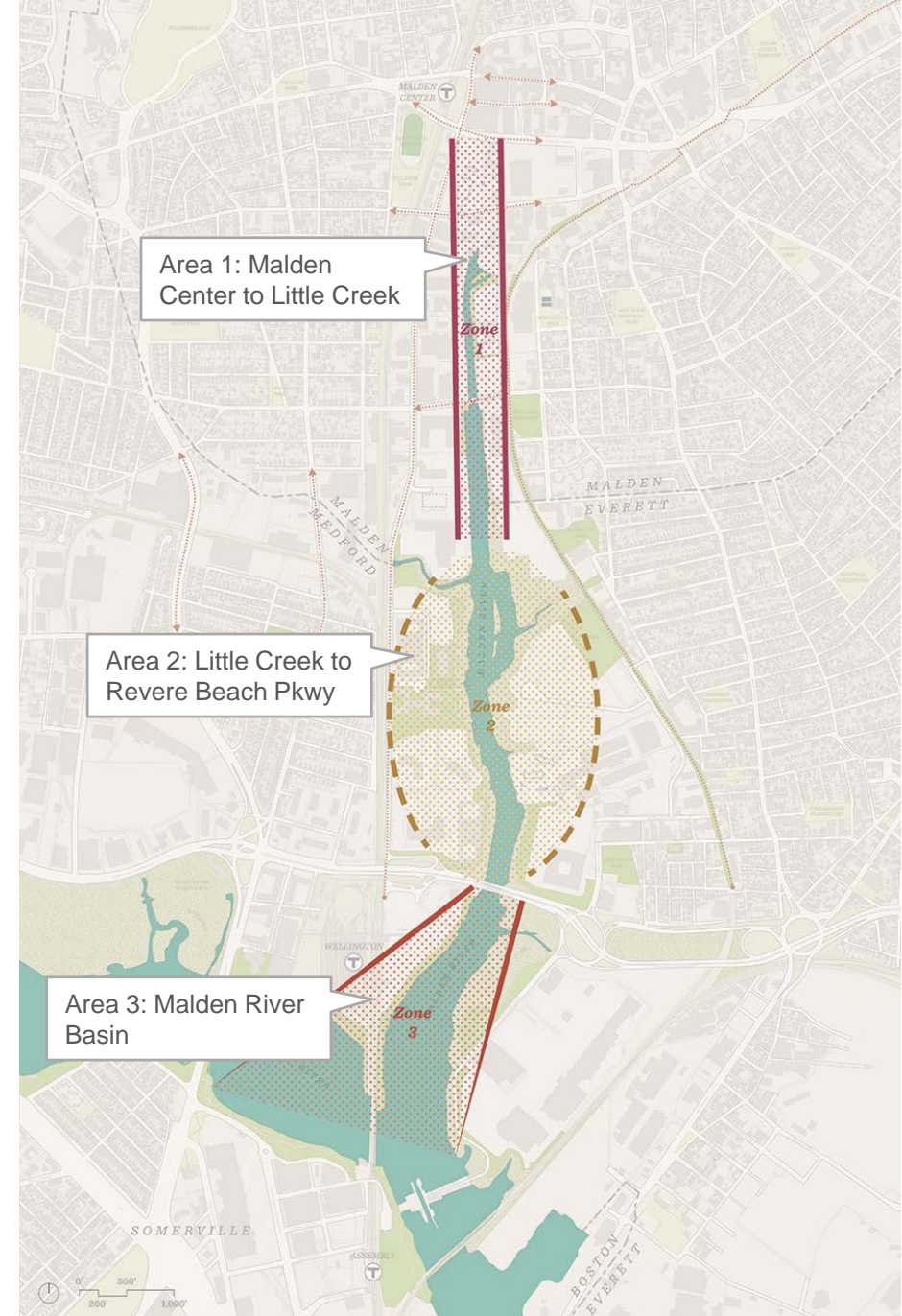
Urban edge condition with tree lined paths

### Area 2: Little Creek to Revere Beach Pkwy

A more “porous” open space with an interwoven system of paths and natural landscape features

### Area 3: The Malden River Basin

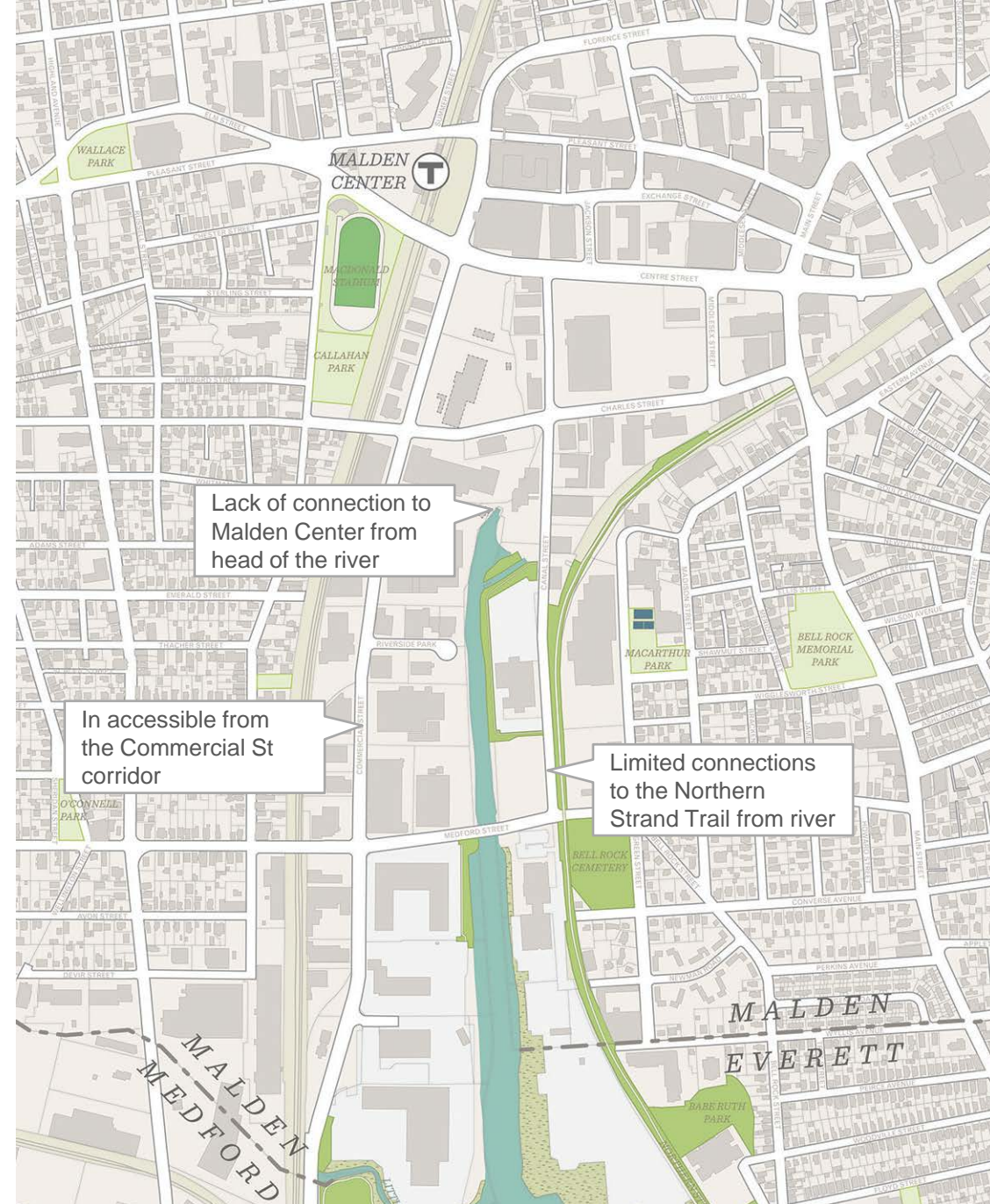
Broad open views towards a naturalized condition of wetlands on the east bank and an extended river trail on the west bank



# Malden Center to Little Creek

## Existing Character

- Largely inaccessible to the public and preexisting paths are disconnected from one another.
- Existing path system is not up to reasonable standards for a multi-use path system.
- The hard edge condition contributes to excess stormwater runoff into the river
- Currently, it lacks connection to Malden Center and the Northern Strand Trail



# Area Conditions: Malden Center to Little Creek



Parking lot at the edge of the river bank prohibits access



Looking south from Medford St



Trail ends abruptly at parking lot



Trail is narrow and not well maintained



Publicly Inaccessible riverfront

# Malden Center to Little Creek

## Future Character

- Harder tree lined edge with an “urban condition”
- Both a promenade and a pathway system



Lachine Canal, Montreal



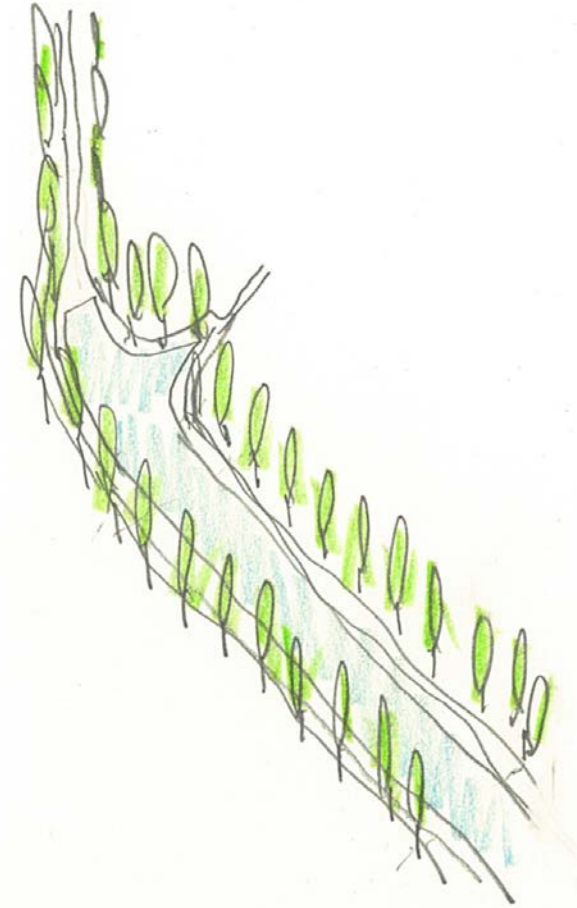
Ship Canal, Seattle



Damme Canal, Belgium



River Seine, Paris





# Malden Center to Little Creek

## Future Character

- Harder tree lined edge with an “urban condition”
- Both a promenade and a pathway system



Lachine Canal, Montreal



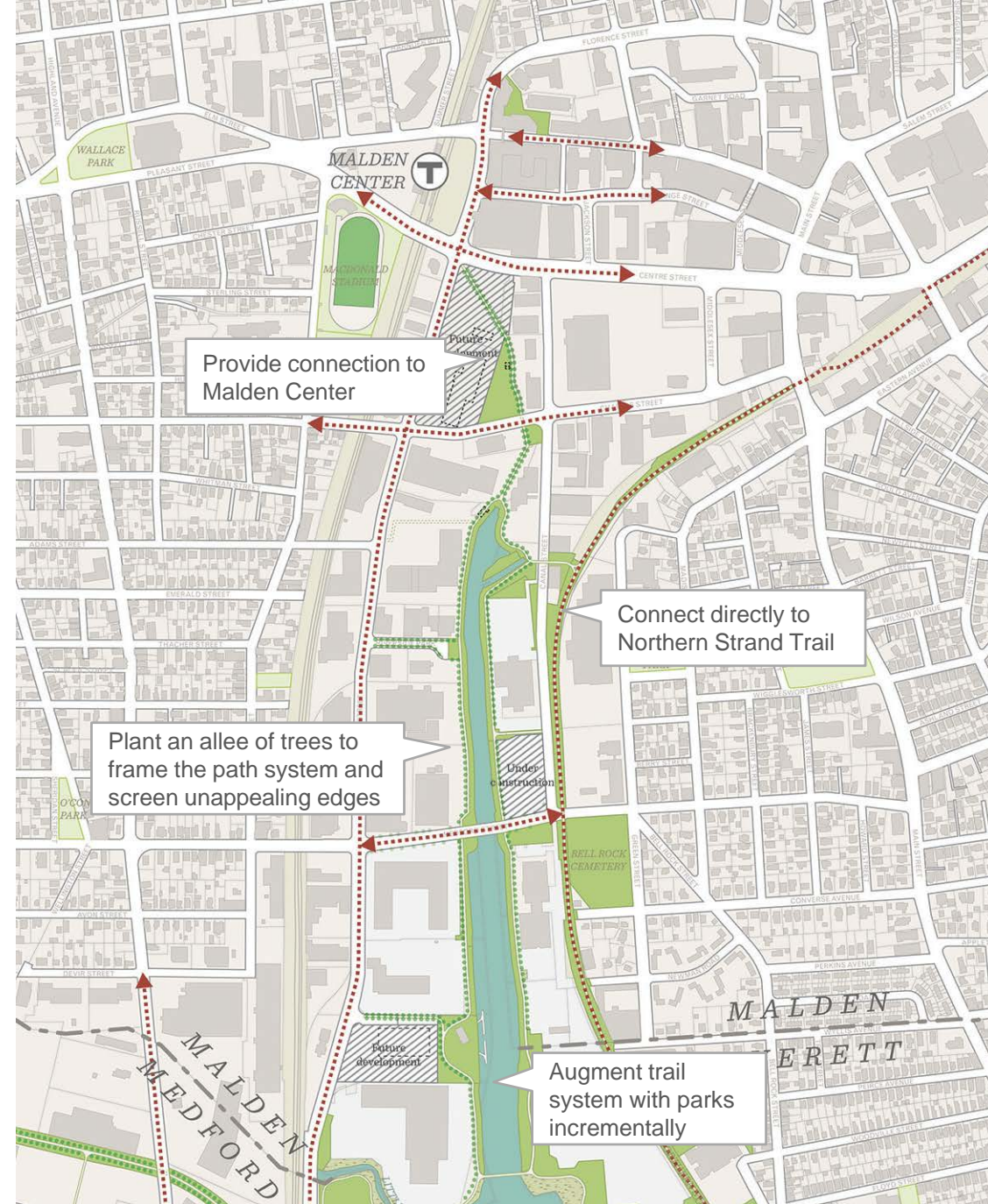
Ship Canal, Seattle



Damme Canal, Belgium



River Seine, Paris



# Little Creek to Revere Pkwy

## Existing Character

- The west side of the river from the Malden city line to Revere Beach Pkwy is complete or under construction
- The east side of the river in this area is largely underutilized and undeveloped
- The Rivergreen site will be redeveloped with future waterfront open space and new connections



# Little Creek to Revere Pkwy



River's Edge, Medford



Little Rock, AR



# Little Creek to Revere Pkwy



River's Edge, Medford



Little Rock, AR



# The Malden River Basin

## Existing Character

- Broad open views towards a naturalized condition of wetlands on the east bank and an extended river trail on the west bank
- Gateway Center path feels disconnected from the rest of the river trail
- Wellington Greenway extension along the west bank should be a priority



Wellington Greenway at the Malden River



# The Malden River Basin



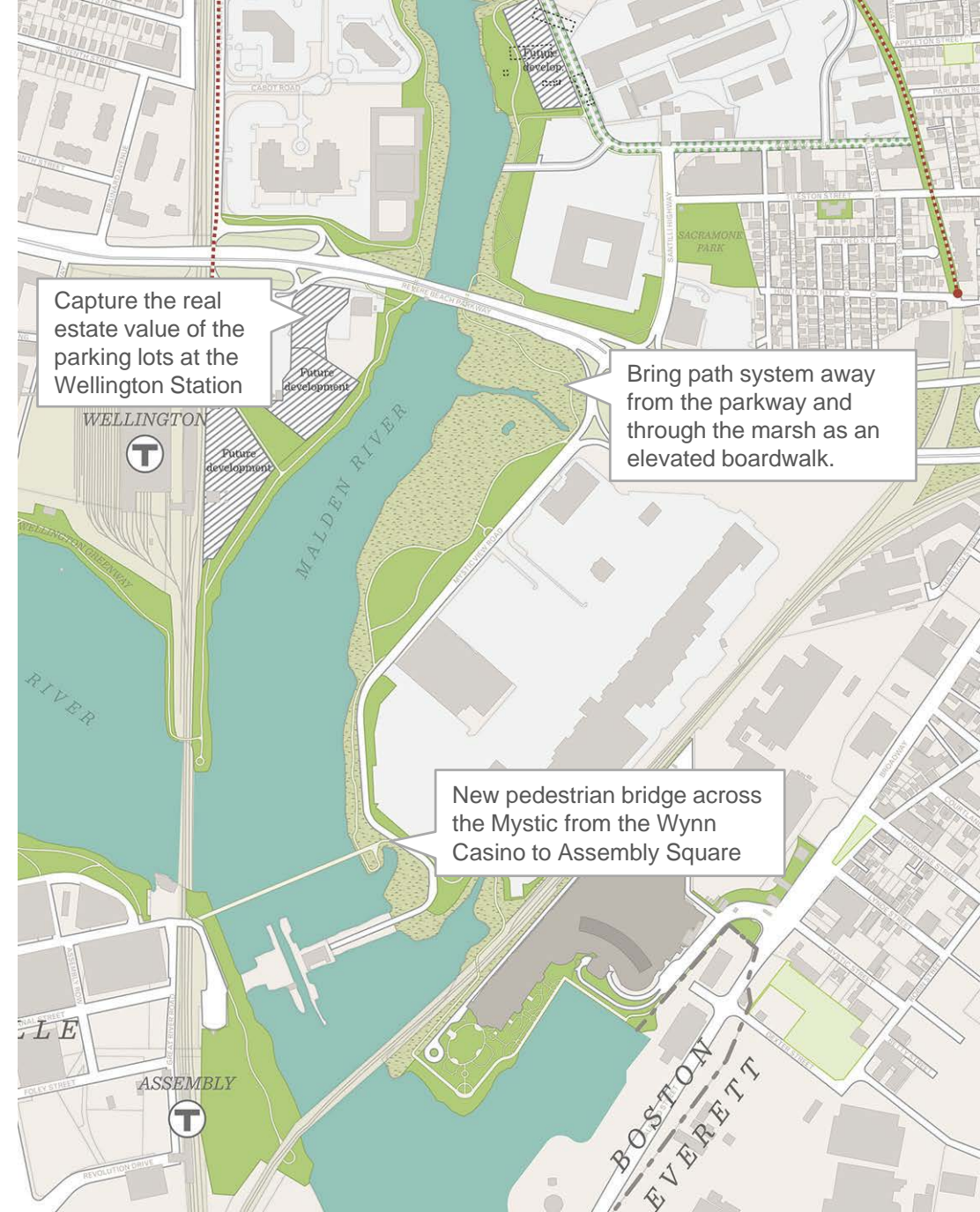
Huntley Meadows



Jekyll Island, GA



Little Rock, AR



Capture the real estate value of the parking lots at the Wellington Station

Bring path system away from the parkway and through the marsh as an elevated boardwalk.

New pedestrian bridge across the Mystic from the Wynn Casino to Assembly Square

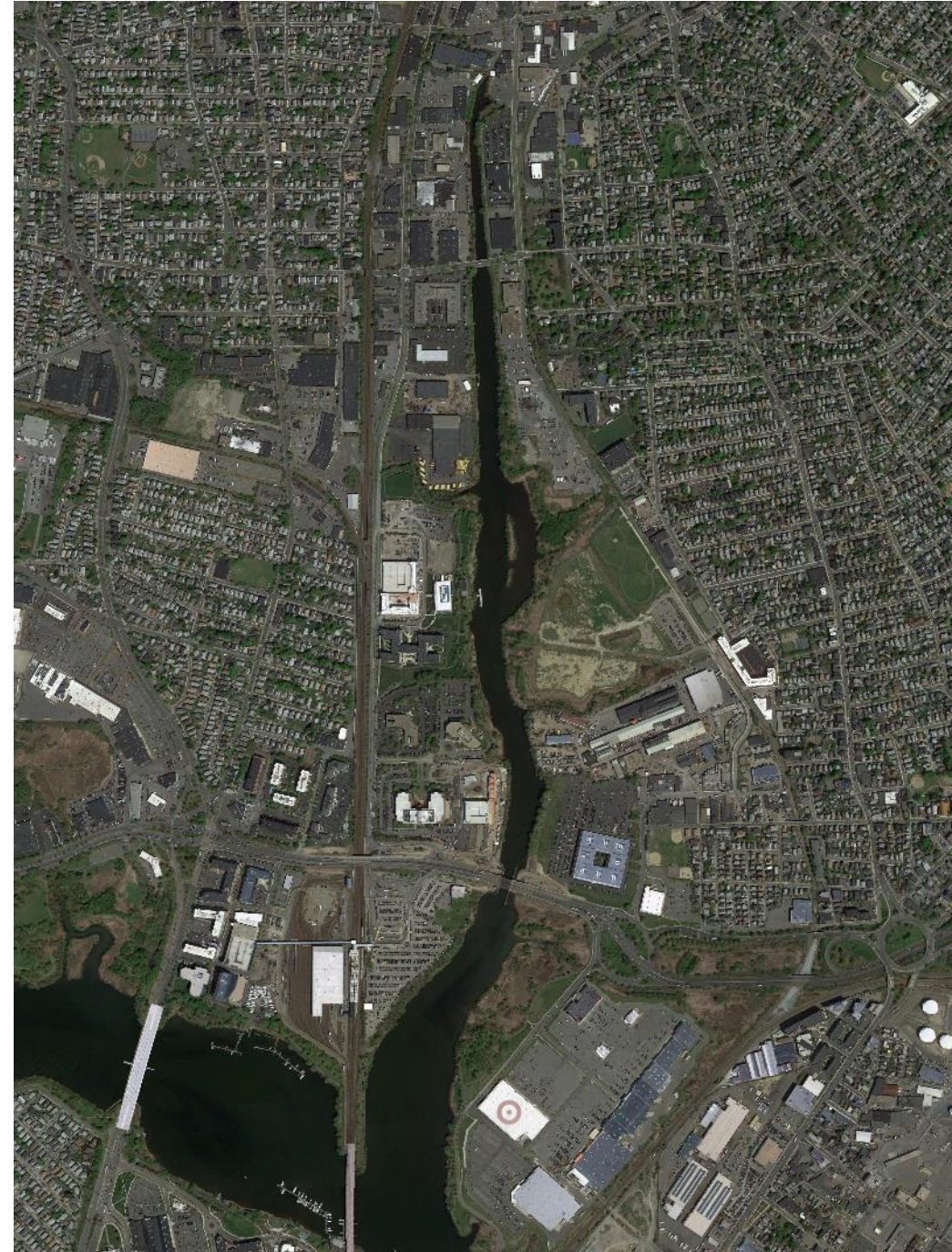
# Public Meeting #2 Agenda

- 6:00-6:30 Open House: Tufts Boathouse and Docks
- 6:30-6:50 Welcome
- 6:55-7:20 Presentation
- 7:25-8:00 Small Group Tables with Designs/Maps
- 8:00 Wrap Up

## Attendees of Note

Mayor DeMaria, Burke and Christenson  
MassDOT, DCR, DEP, National Grid

Aerial of the Malden River



# Community Engagement: Project Page

The “official home” of the project:  
[mysticriver.org/maldenrivergreenway](http://mysticriver.org/maldenrivergreenway)

- Project summary and milestones
- Links to on-line mapping survey
- Links to project documents
- Event listings

## Project Next Steps:

- Comment period on project website open until August 25th
- Malden River Walking Tour on September 1st
- Final Public Meeting – Late September

