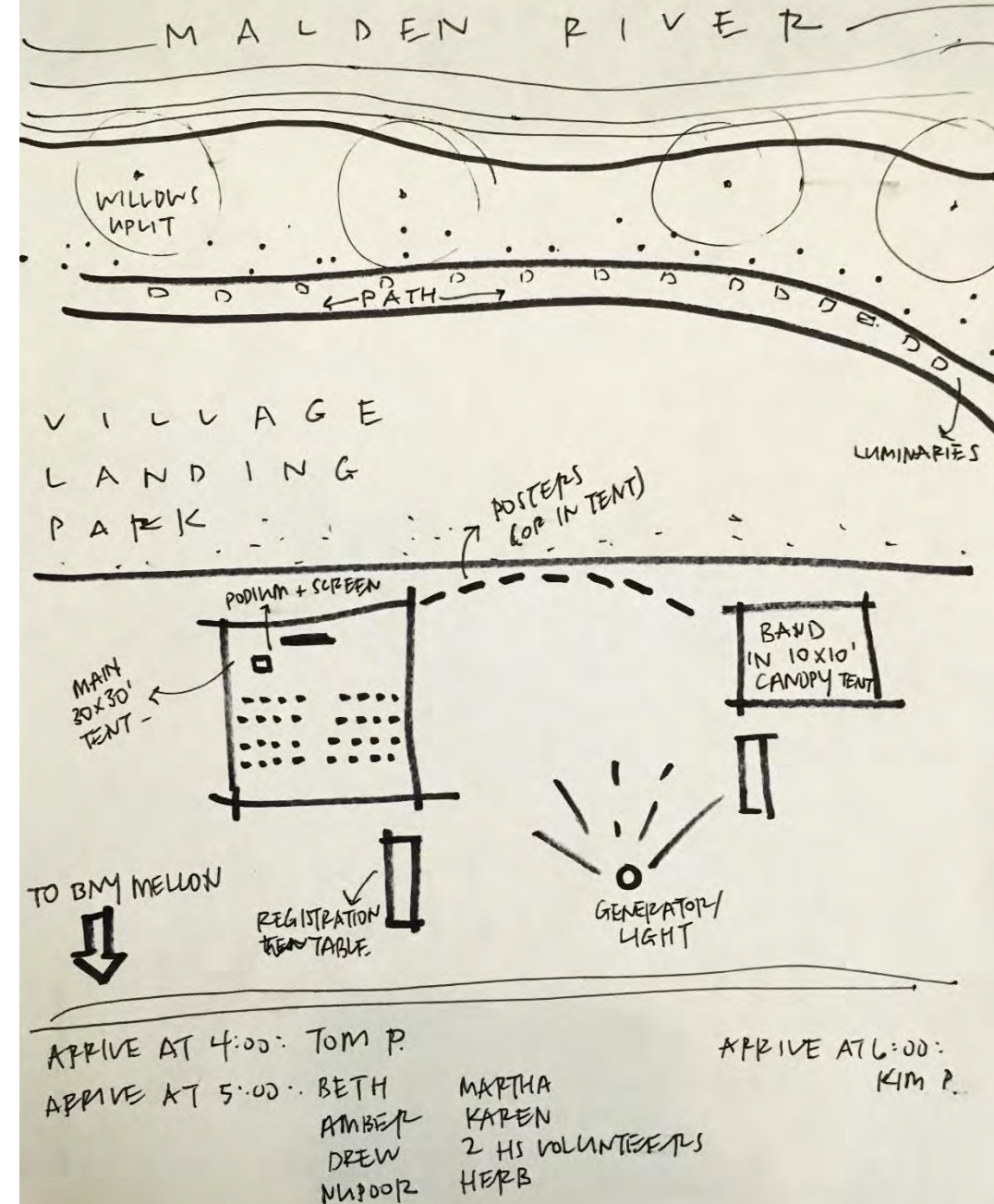


MALDEN RIVER
GREENWAY

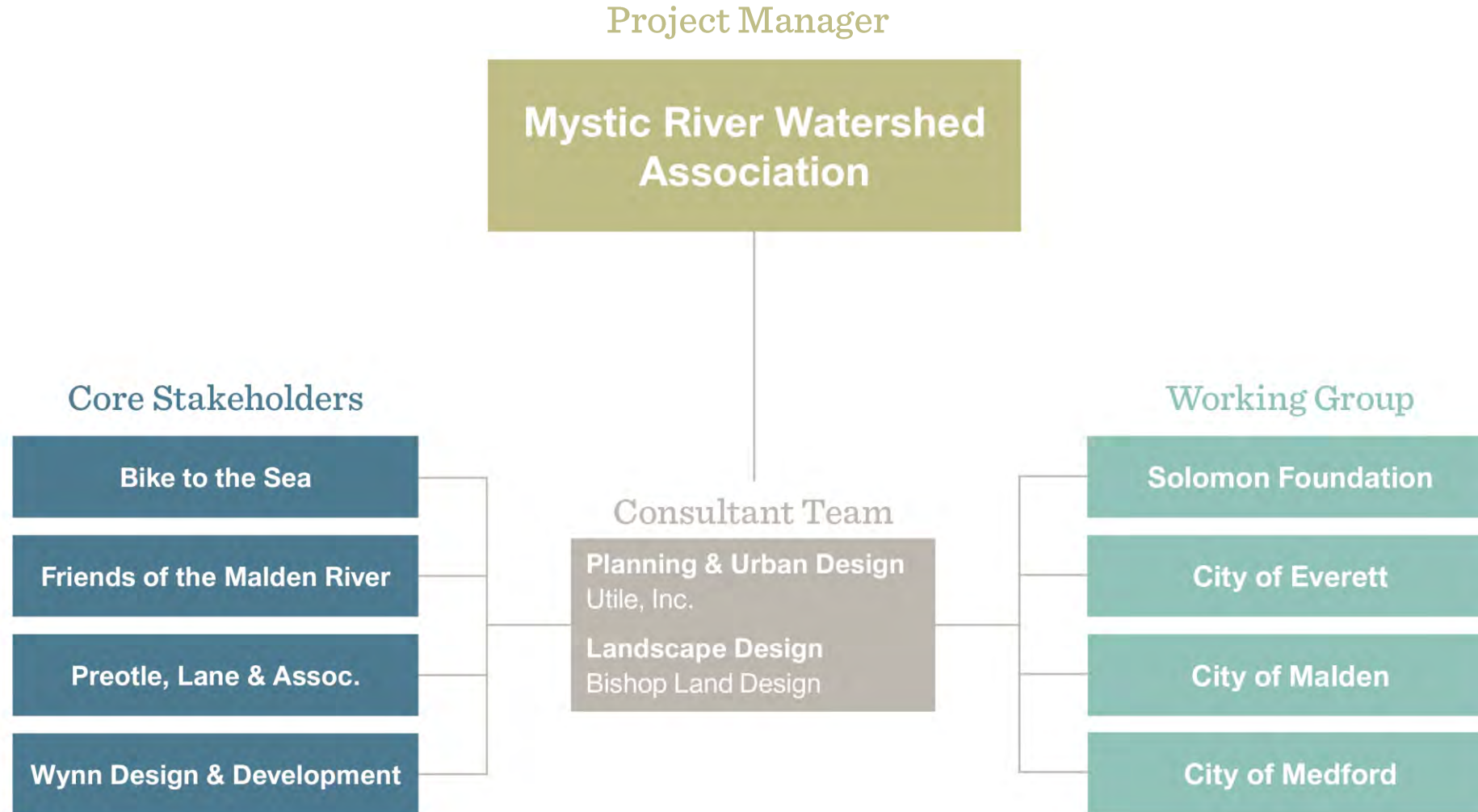
Public Meeting #3 Agenda

- **6:35:** Welcome - Patrick Herron, Mystic River Watershed Association
- **6:40:** Opening Remarks - Mayor DeMaria
- **6:50:** Agency/Elected Official Remarks
- **6:55:** Presentation of Final Greenway Plan
- **7:15:** Open House Celebration - Mingling, Plan Feedback, Band
- **8:00:** Closing Remarks

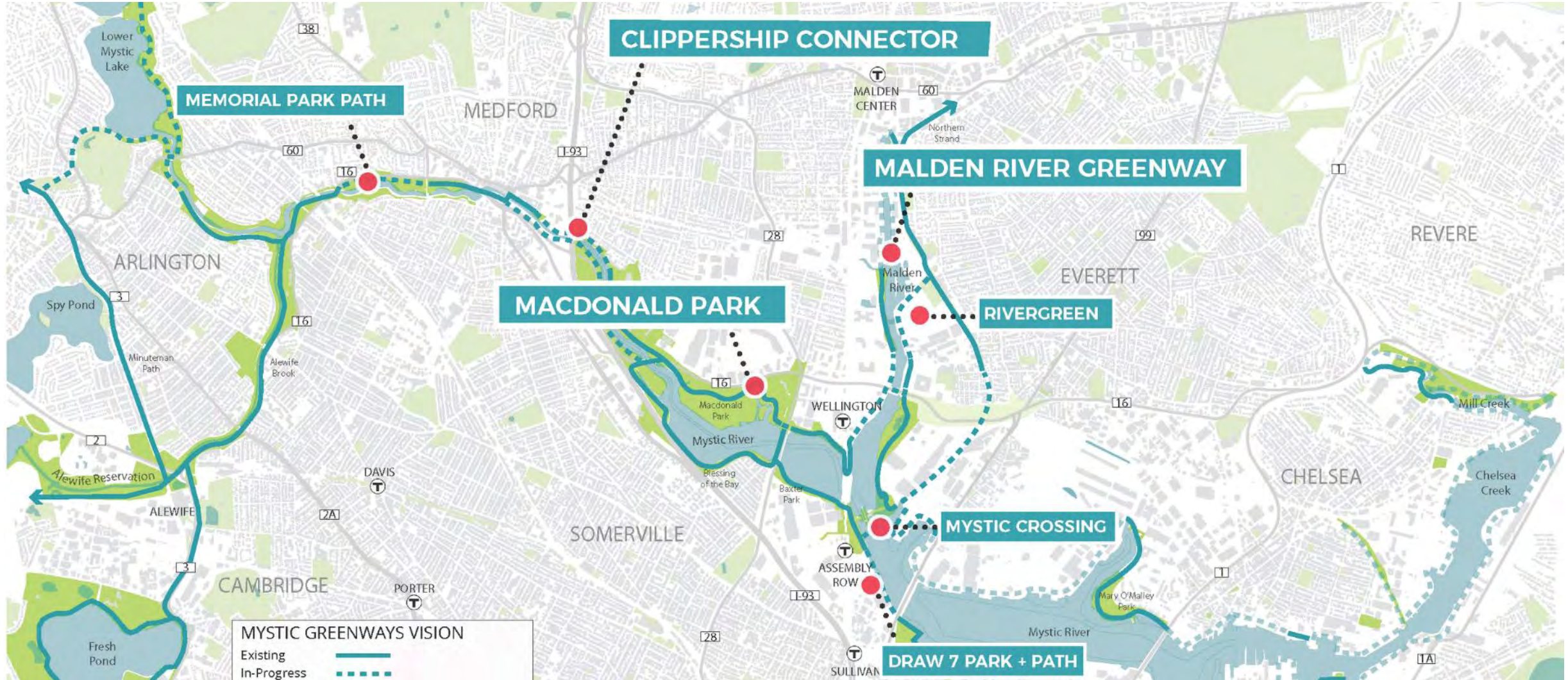


Amber's Plan for 10/4 Meeting

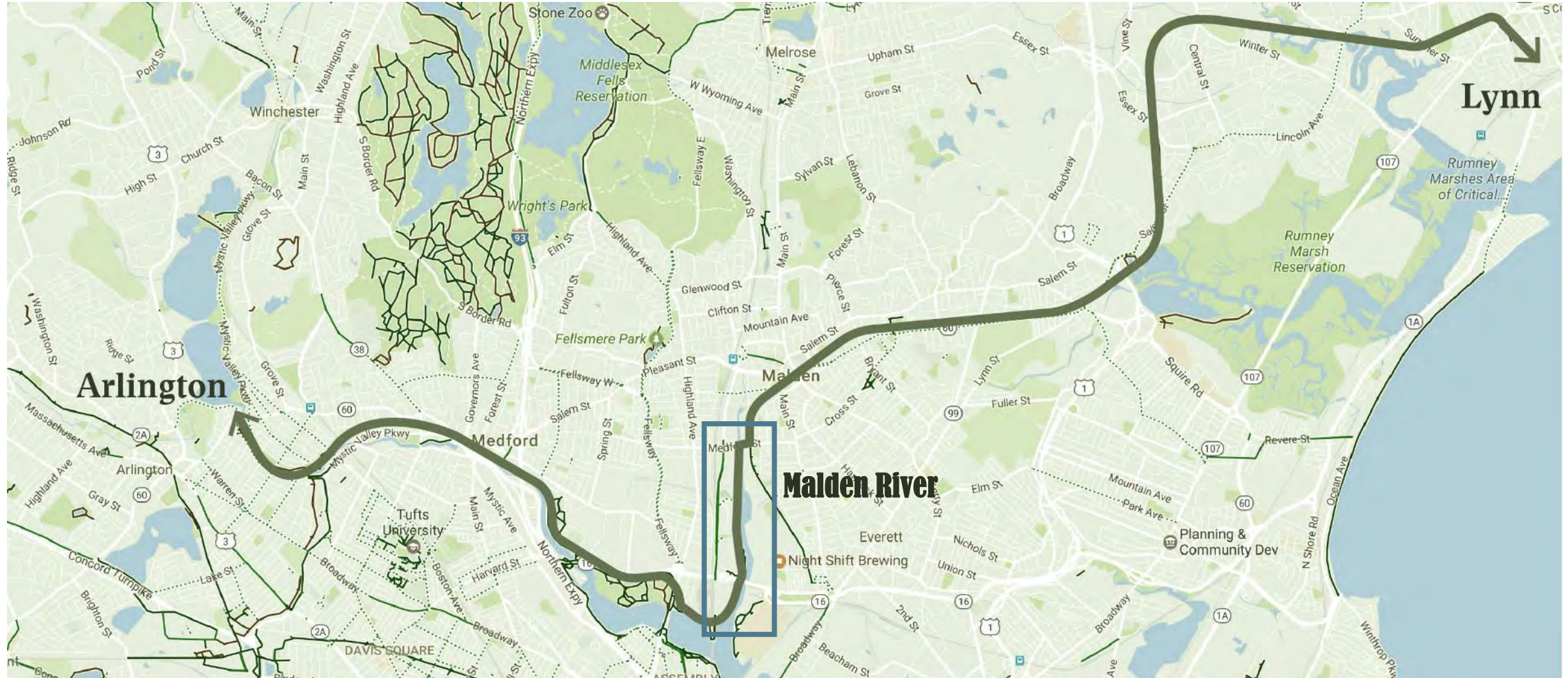
Organizational Chart



Mystic River Greenways



Malden River Greenway could fill the gap in a Lynn to Arlington Link

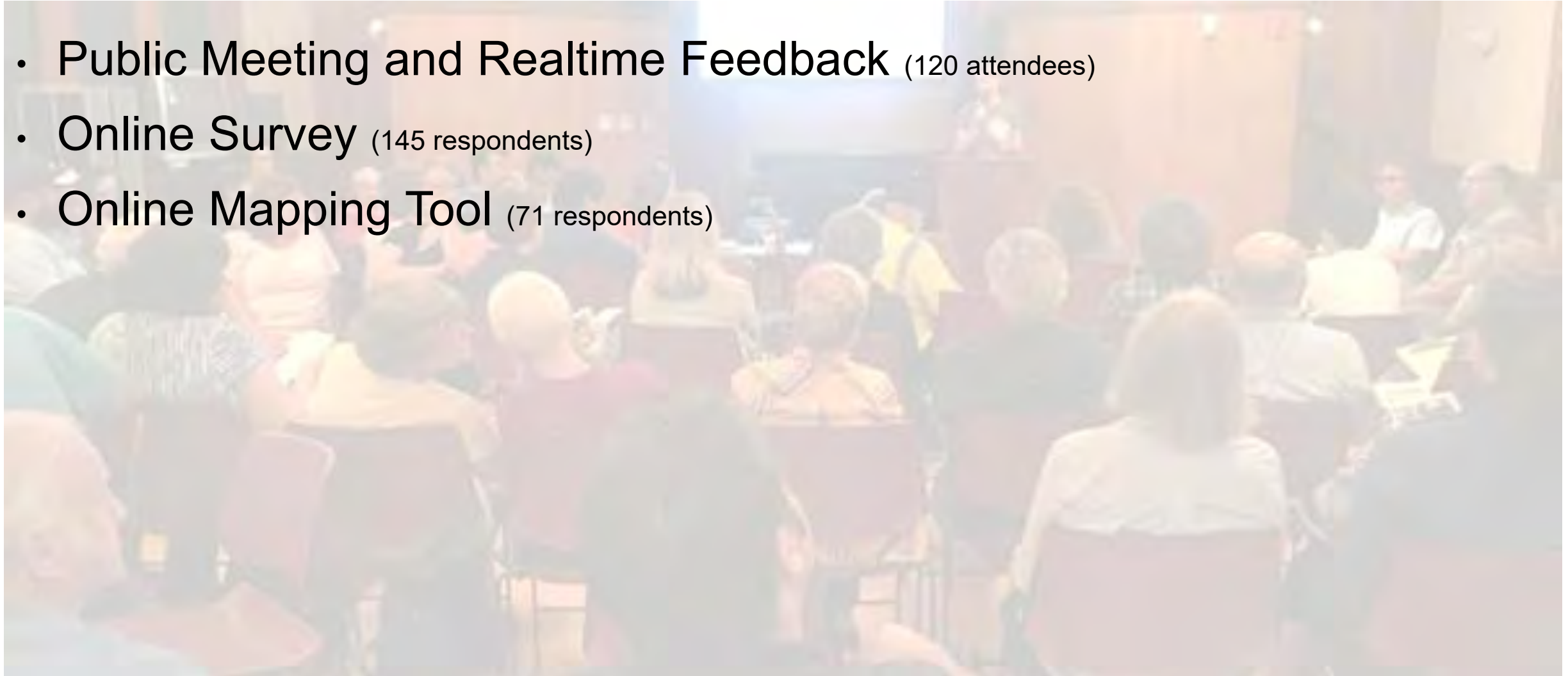


Community Engagement Feedback



Community Engagement: Venues for Public Input

- **Public Meeting and Realtime Feedback** (120 attendees)
- **Online Survey** (145 respondents)
- **Online Mapping Tool** (71 respondents)



Community Engagement: Public Meeting #1

- Public Meeting and Realtime Feedback
 - Open house style meeting with activity boards
 - Presentation of the project, study area analysis, opportunities and constraints
 - Group breakout conversations and feedback



Public Meeting at the Malden Library





community and social gathering



MALDEN RIVER GREENWAY

Place a dot on the amenities that appeal to you most



Recreation and Mobility



public programming

Community Engagement: Public Meeting #1 Takeaways

KEY THEMES FROM PUBLIC MEETING JUNE 26, 2017

EXISTING RIVER USES

- Can't get there! (except at River's Edge, Comcast building, Medford St Bridge)
- Run (but broken path system makes it difficult)
- Bike (mostly Northern Strand which is disconnected from the river)
- Boating (mostly crew, but hard to view from the land)
- Nearby destinations (ie- Night Shift in Everett, but not connected to river)

CHARACTER OF THE MALDEN RIVER

- Channelized, invisible, urban, industrialized, paved over, connects two T stations
- Peaceful and quiet; provides access to nature (birds) and relief from the noise and traffic of the cities
- Connects three cities, a unifying element

NEEDS/DESIRES FOR IMPROVEMENT

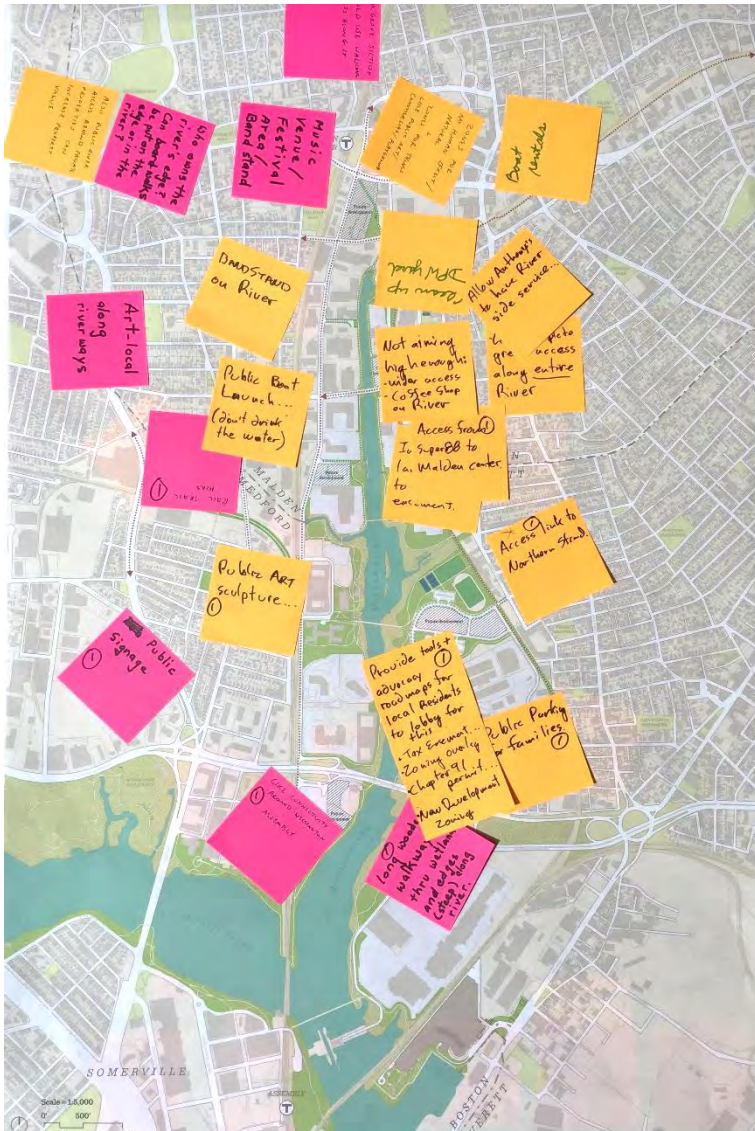
- Clean-up the river, and keep it clean; (deal with trash and water quality/sediments)
- Improve connectivity for walking/biking and add a bridge across
- More wildlife habitat/natural areas
- More and better boating options
- Create programming (public art, markets, festivals, group exercise)

Community Engagement: Public Meeting #2

- Representatives from all three surrounding cities attended
- **Over 80 people participated in the workshop**, sharing their reflections on the initial concepts
- Attendees offered input on **future opportunities for recreation, open space and community programming** along the river.
- Breakout groups made certain that **each person at the meeting had an opportunity to participate**



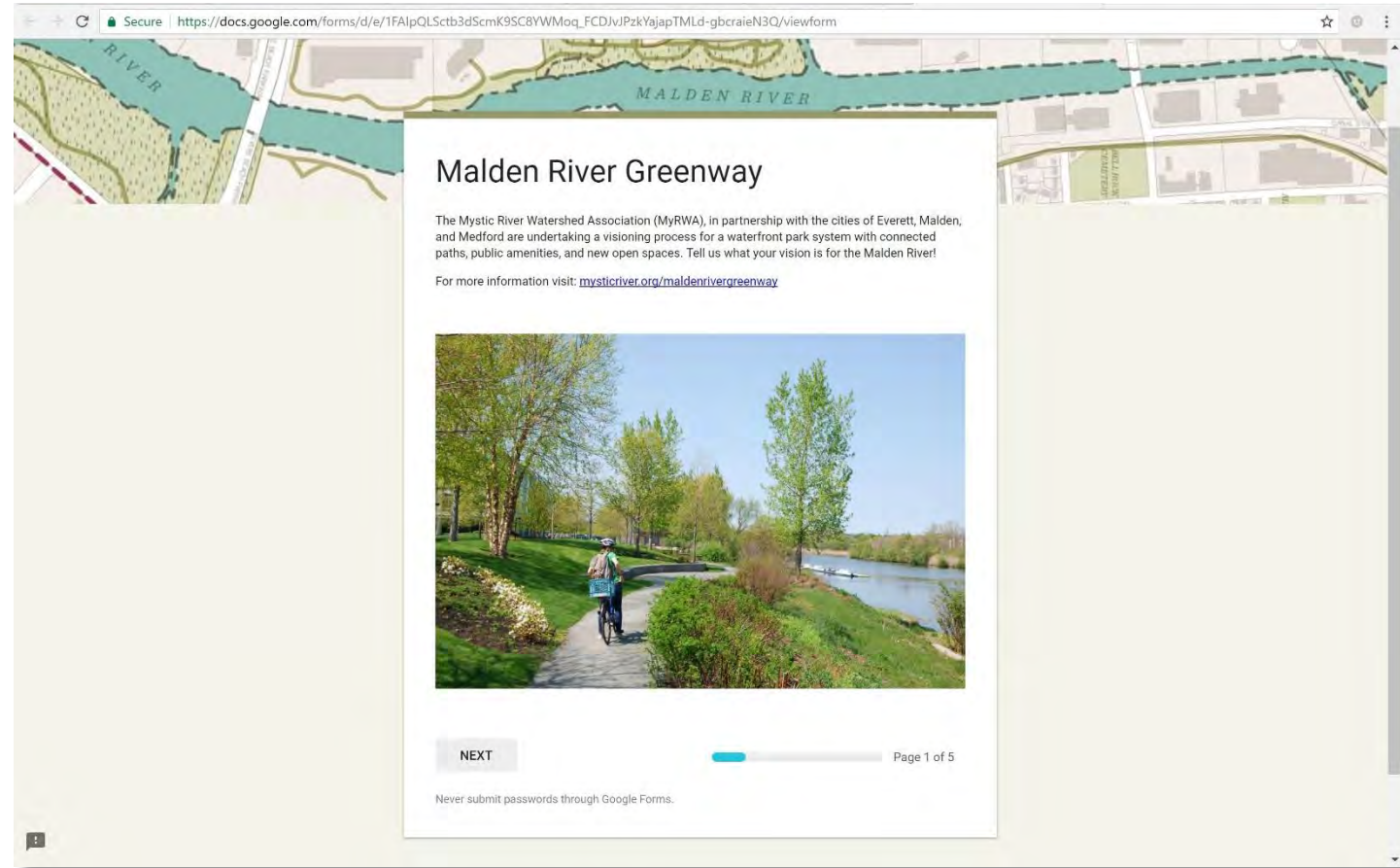
Community Engagement: Public Meeting #2



Community Engagement: Online Survey

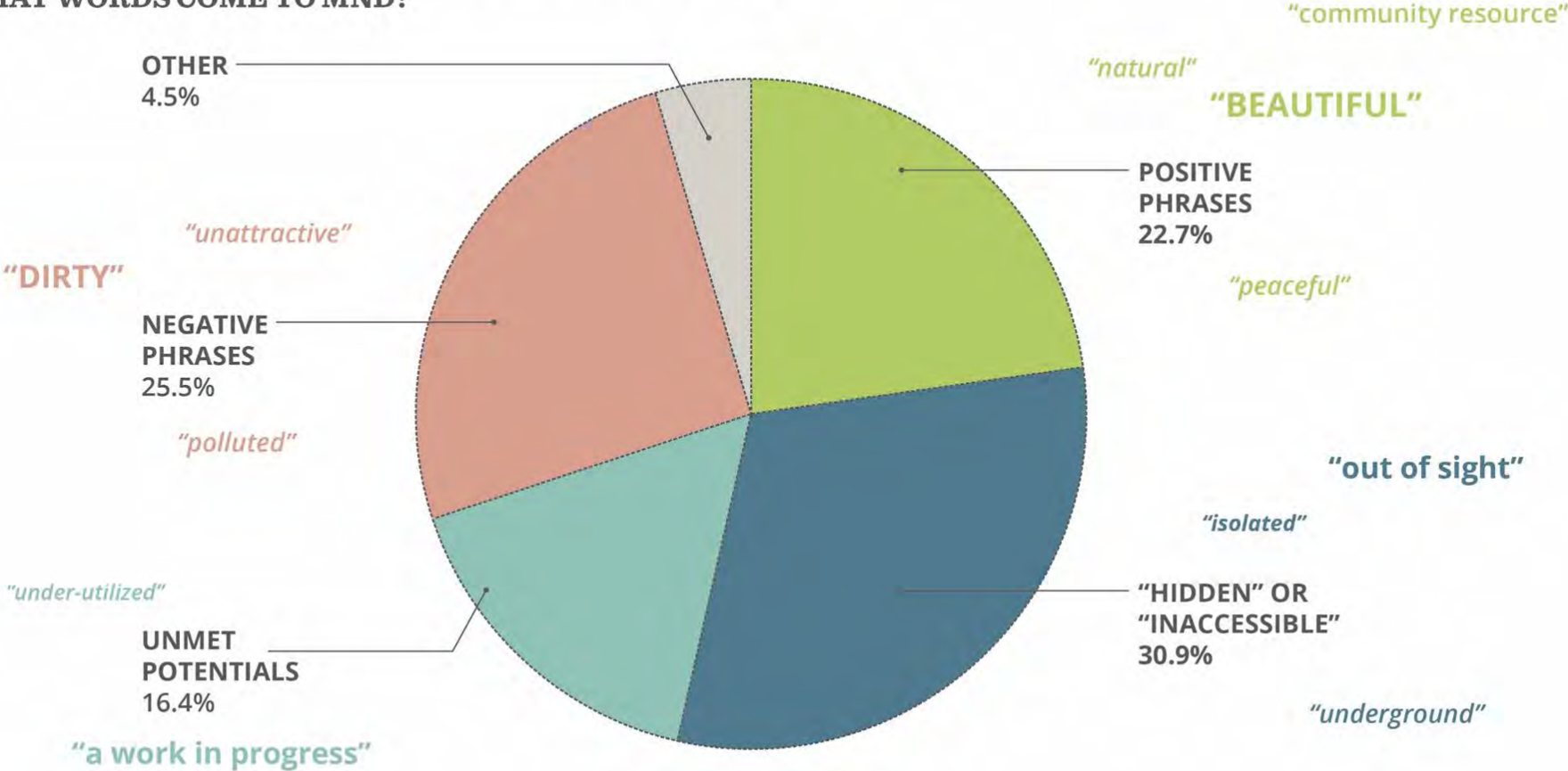
What we heard!

- Phrases for vision statement
- Most important factors for vision:
 - Access
 - Community Uses
 - Connectivity
- Information about respondent
 - What they do on the riverfront
 - How they access the river
 - How they get to the river (drive, walk, bike, transit)
 - How often they visit the Malden River?
 - User Profile (age/gender/race)
- General Comments



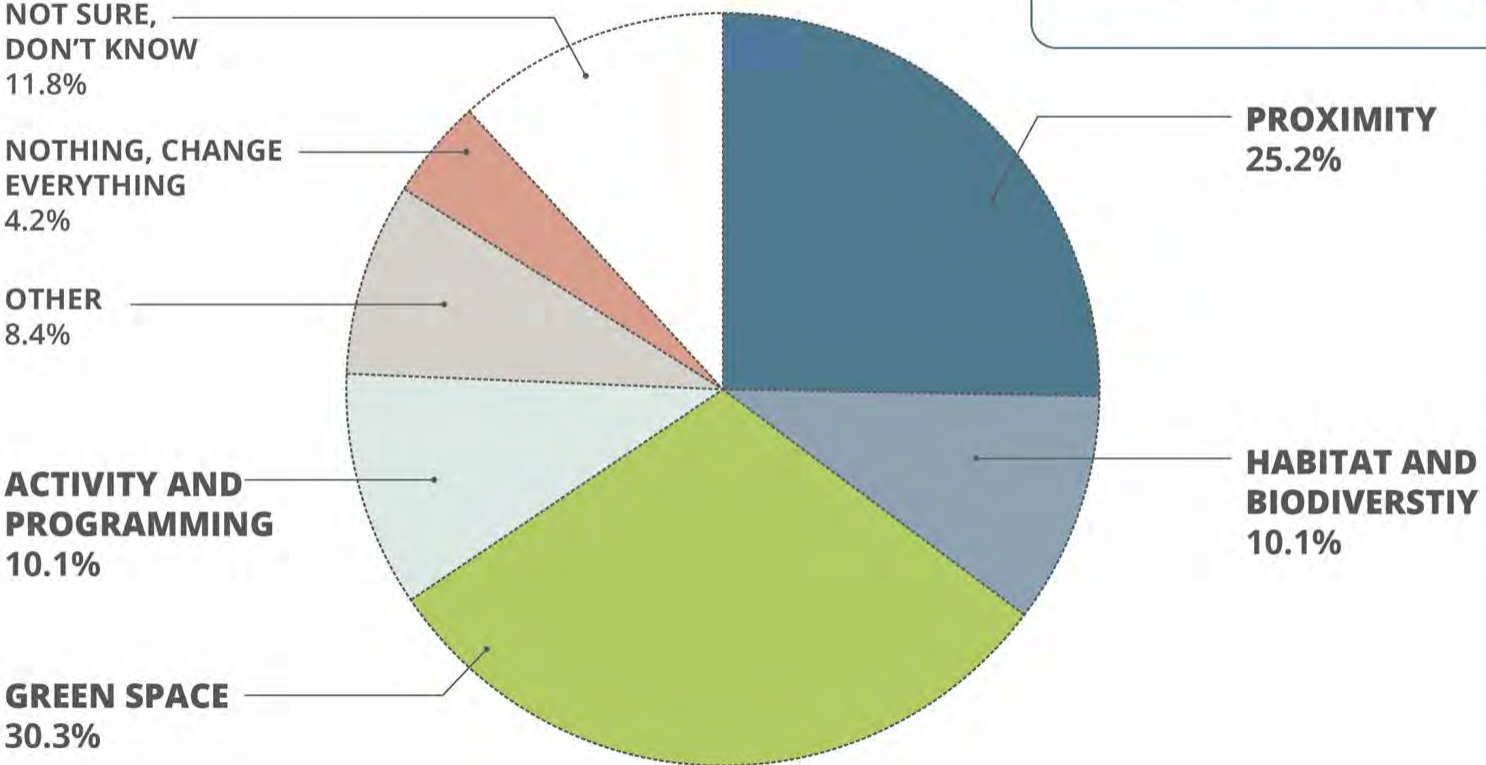
Community Engagement: Online Survey

WHEN YOU THINK ABOUT THE MALDEN RIVER TODAY, WHAT WORDS COME TO MIND?



Community Engagement: Online Survey

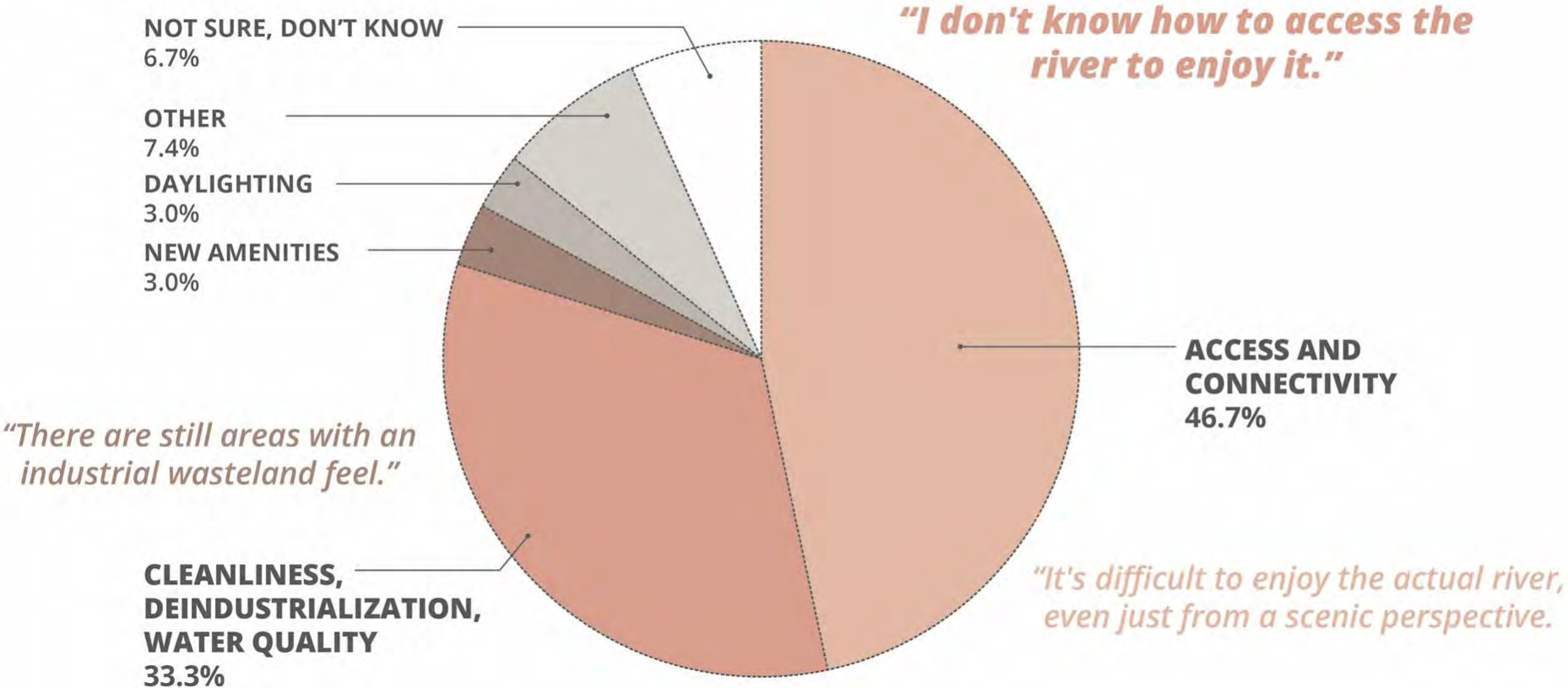
NAME A FEW THINGS YOU LOVE AND WOULD KEEP THE SAME ABOUT THE MALDEN RIVER.



"We're lucky to have a river, lets take advantage of it!"

Community Engagement: Online Survey

NAME A FEW THINGS YOU DISLIKE AND WOULD CHANGE ABOUT THE MALDEN RIVER.



Community Engagement: Online Survey

WHICH OF THESE FEATURES WOULD YOU BE EXCITED TO SEE ALONG THE MALDEN RIVER?

MOST EXCITED

dedicated paths for walking and biking

new parks or open space

nature and wildlife

EXCITED

seasonal programming (food trucks, screenings, weekend markets)

water-related activities (boat rentals, swimming)

boardwalks or docks

connections across the Malden River

“...a place where crew teams would draw spectators and revenue for the City”

LEAST EXCITED

athletic fields

stores and restaurants

public parking

“...a resource that is respected and appreciated by the community!”

Community Engagement: Mapping Survey

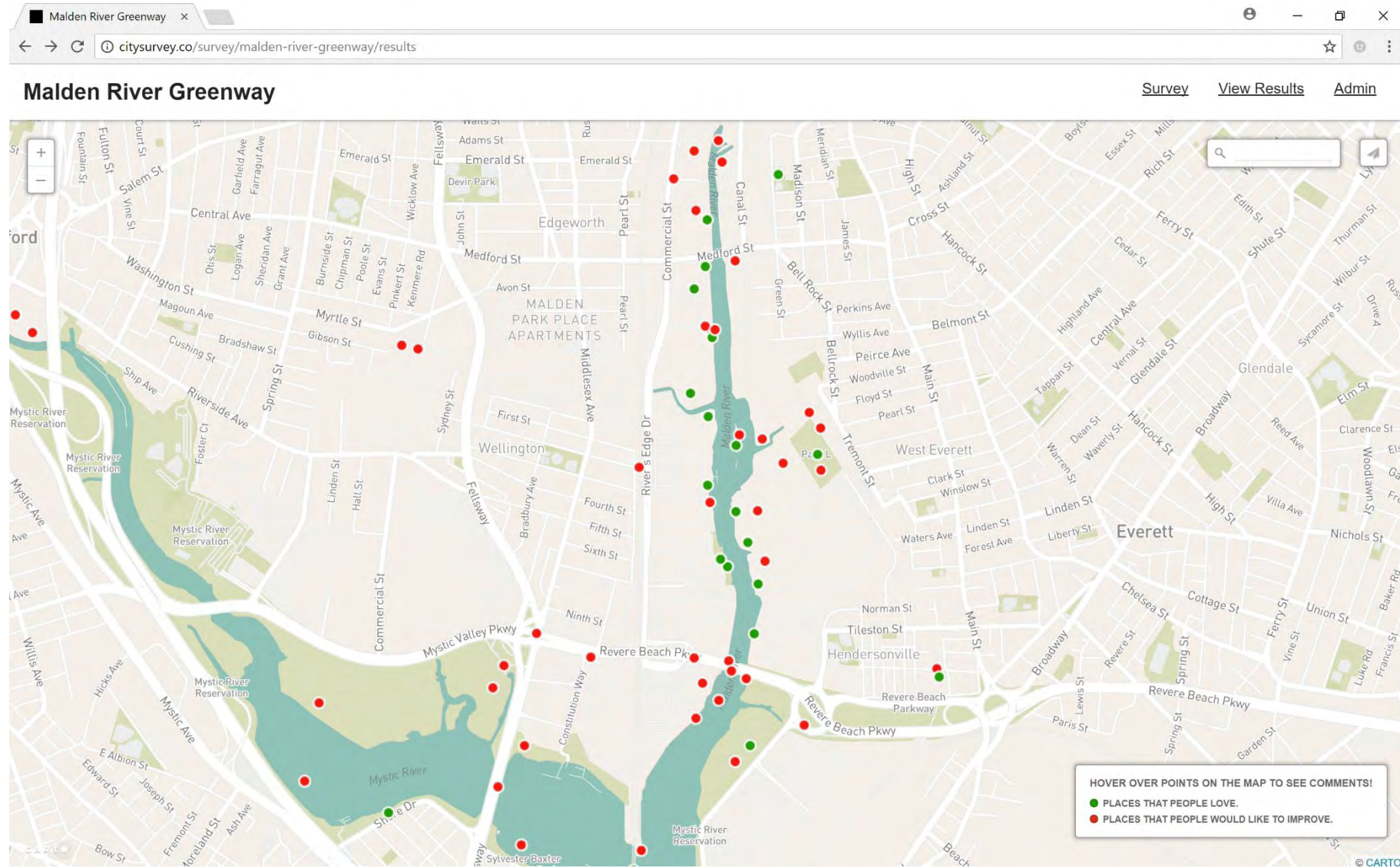
Tool ties responses to a point on the map

Places that people love...

“beautiful, well-maintained landscape - all waterfront parks should be like this one!”

Places that people would like to improve...

“remove tires and possibly submerged trucks”



Framework Plan



Framework Plan Design

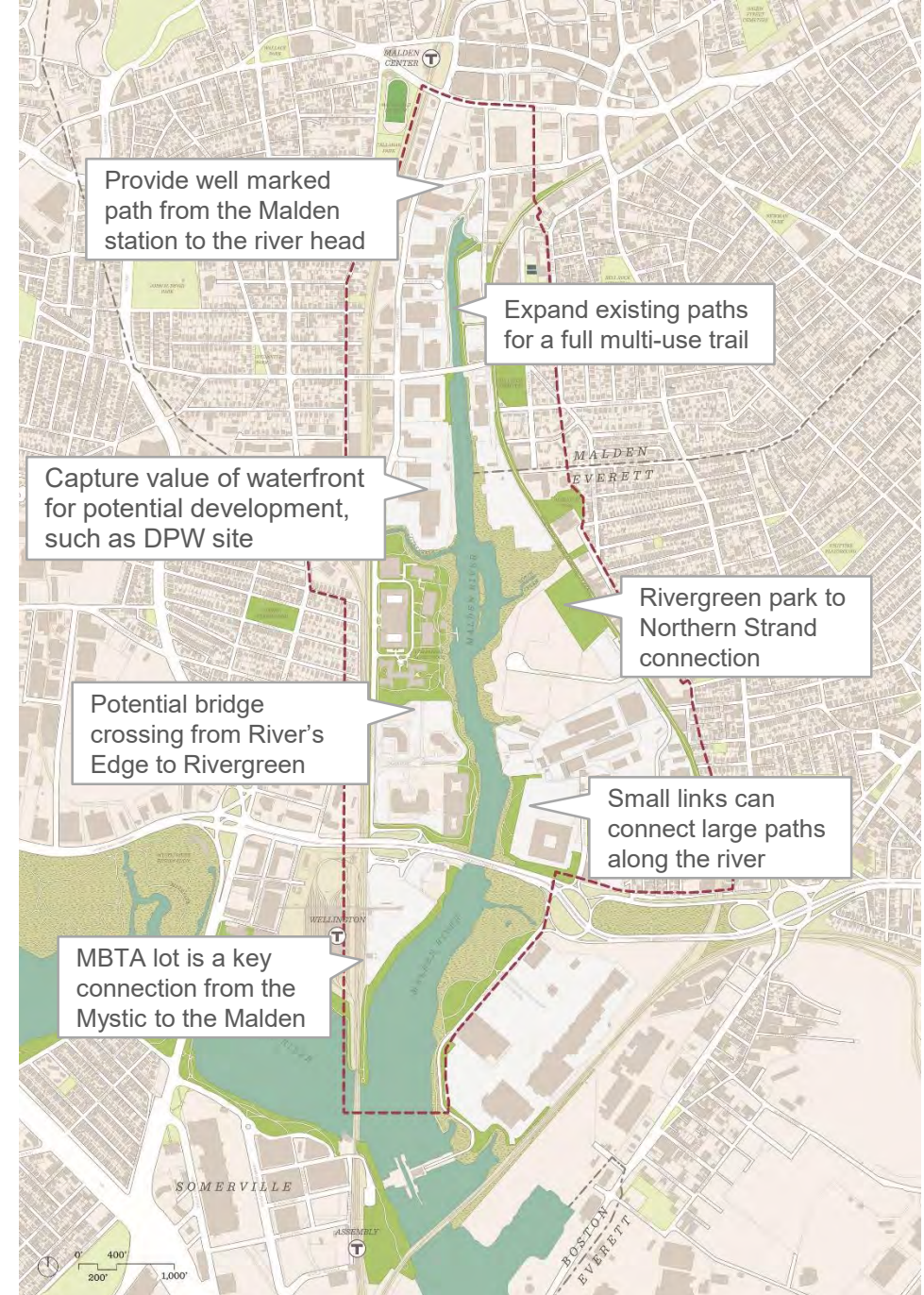
Planning and Design Objectives

1. Design a safe, convenient and accessible path system (walking, running, biking) for local residents and visitors
2. Build an urban greenspace with thriving biodiversity
3. Promote a healthy lifestyle through active design and open space programming
4. Create a green open space network that provides a key link in a larger regional greenway system



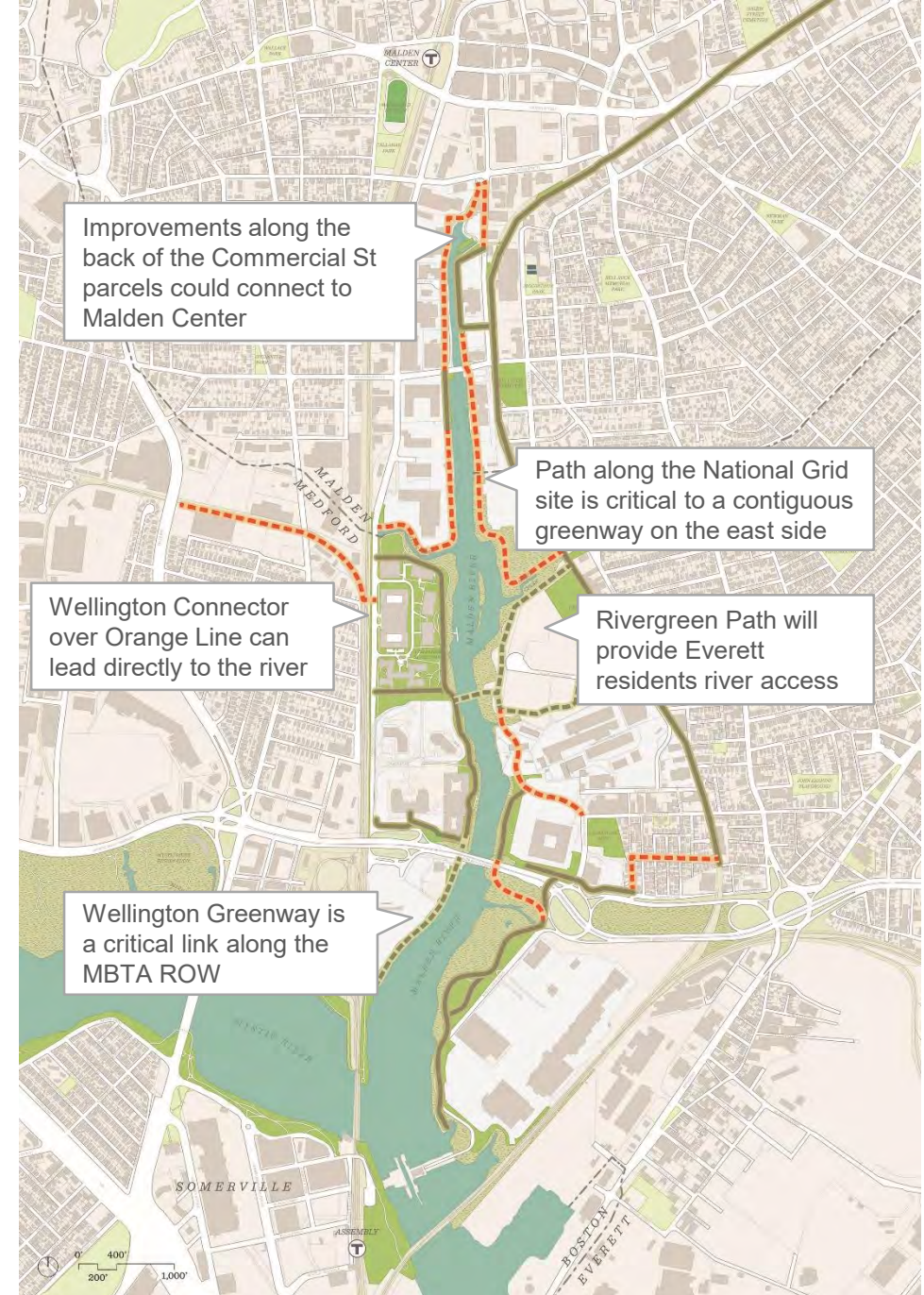
Opportunities

- New connections from the MBTA stations will provide multimodal connections for outside visitors
- Connecting the Northern Strand Trail to the Rivergreen Park will provide a direct connection to the river for local residents
- A land bridge over the Orange Line tracks will provide direct access for the Wellington neighborhood to the riverfront
- Underutilized or undeveloped sites should capture the value of waterfront access in future development.



Path Network: Existing, Planned, and Gaps

- The National Grid Site and the western edge of the river in Malden are two focus areas for connecting the greenway
- Rivergreen will be constructing a full path to the water as part of the redevelopment plan
- The Wellington Greenway is also in the planning stages and will connect under Revere Beach Parkway
- The potential pedestrian bridge from the Wellington Neighborhood could be a significant link to draw residents to the river.



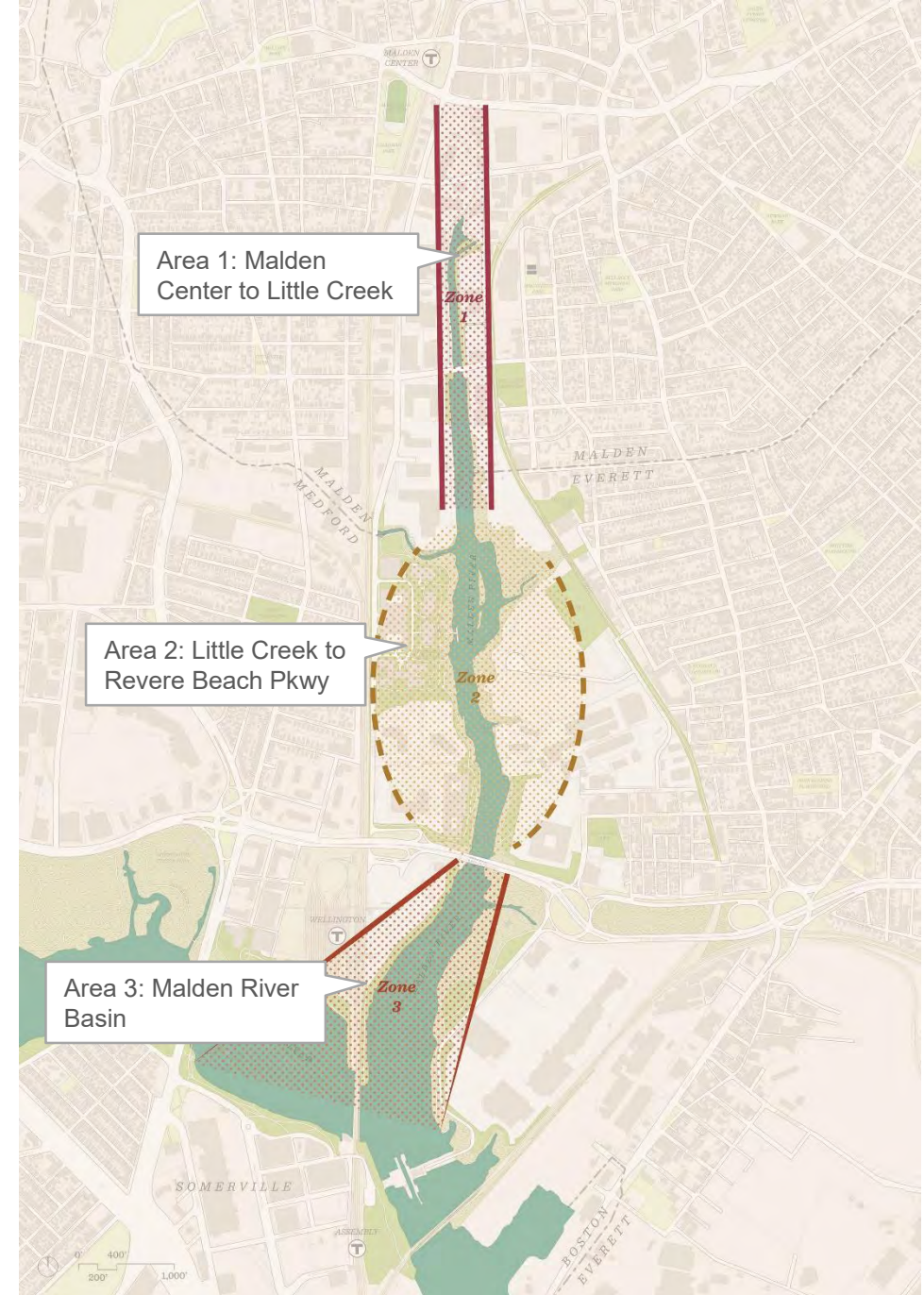
Framework Plan Character Areas

Three Character Zones

The Malden River Greenway can be defined by three character zones that offer different waterfront and open space experiences.

This variety of conditions lends itself to

- Capturing unique natural conditions and the restoration of degraded areas,
- Evolving landscape concepts for each area,
- Programming alternatives and distinct recreational uses
- Creating a physical continuity in the greenway system, but with a consistent



Framework Plan Design

Planning and Design Objectives

1. Design a safe, convenient and accessible path system (walking, running, biking) for local residents and visitors
2. Build an urban greenspace with thriving biodiversity
3. Promote a healthy lifestyle through active design and open space programming
4. Create a green open space network that provides a key link in a larger regional greenway system



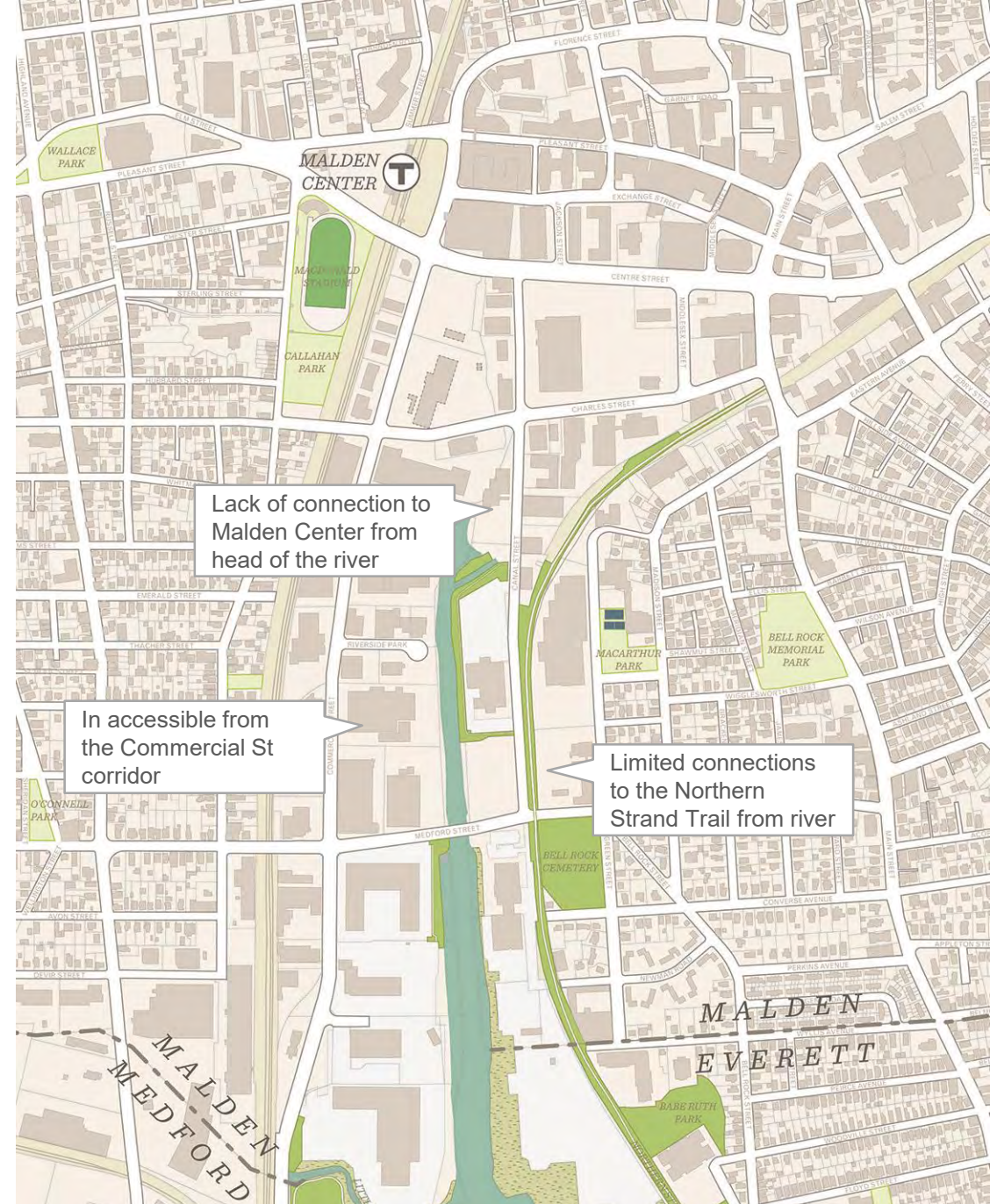
Malden Center to Little Creek



Malden Center to Little Creek

Existing Character

- Largely inaccessible to the public and preexisting paths are disconnected from one another.
- Existing path system is not up to reasonable standards for a multi-use path system.
- The hard edge condition contributes to excess stormwater runoff into the river
- Currently, it lacks connection to Malden Center and the Northern Strand Trail



Malden Center to Little Creek: Area Conditions



Parking lot at the edge of the river bank prohibits access



Looking south from Medford St



Trail ends abruptly at parking lot



Trail is narrow and not well maintained



Publicly Inaccessible riverfront

Malden Center to Little Creek

Future Character

- Harder tree lined edge with an “urban condition”
- Both a promenade and a pathway system



Lachine Canal, Montreal



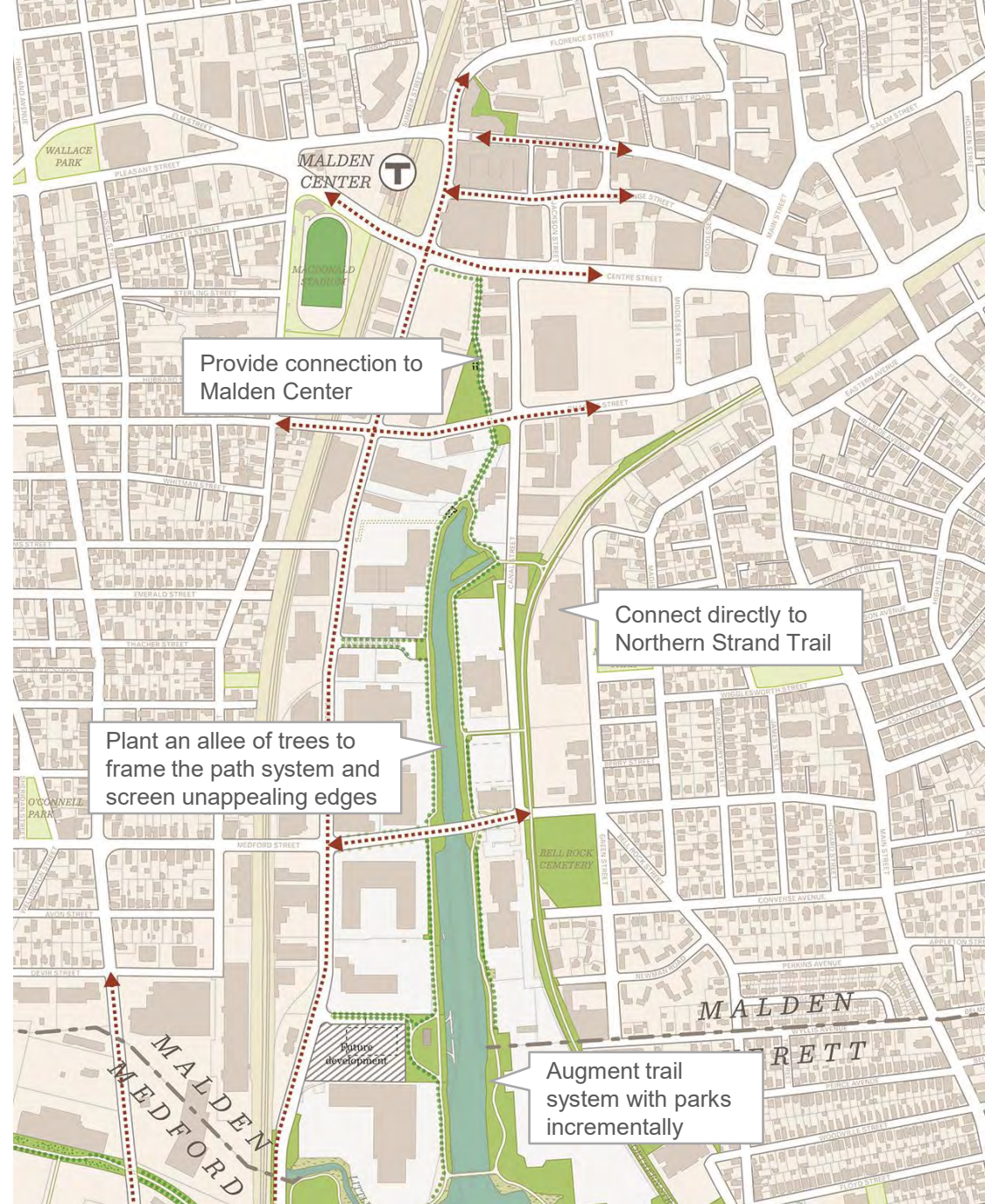
Ship Canal, Seattle



Damme Canal, Belgium



River Seine, Paris



Malden Center to Little Creek

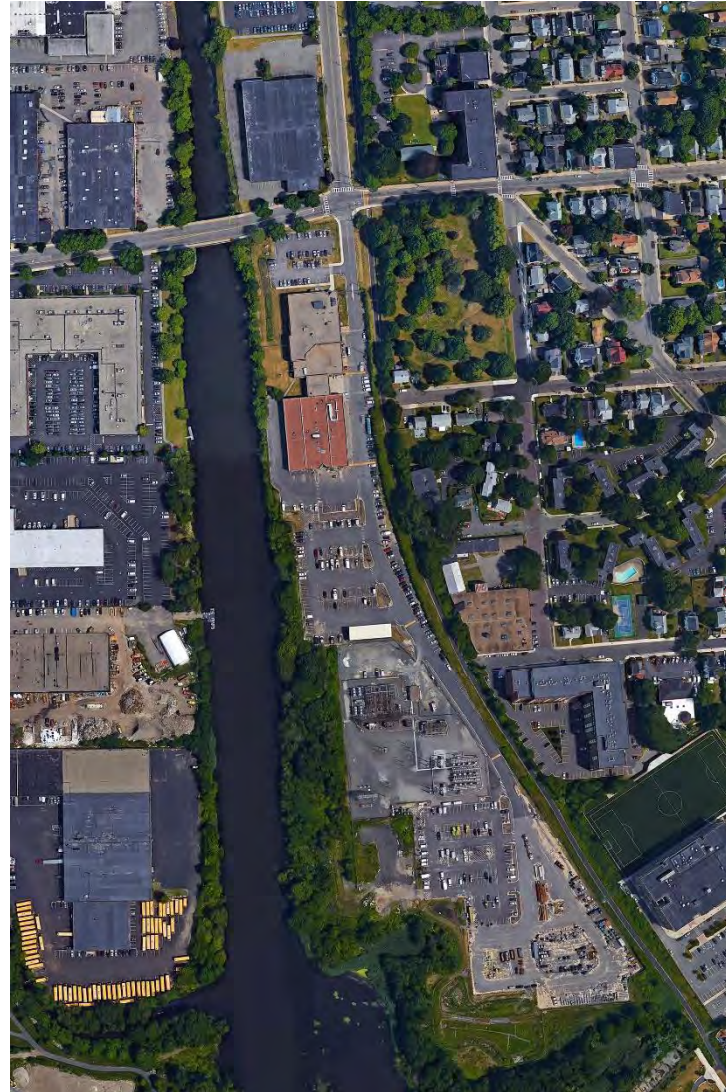


Malden Center to Little Creek

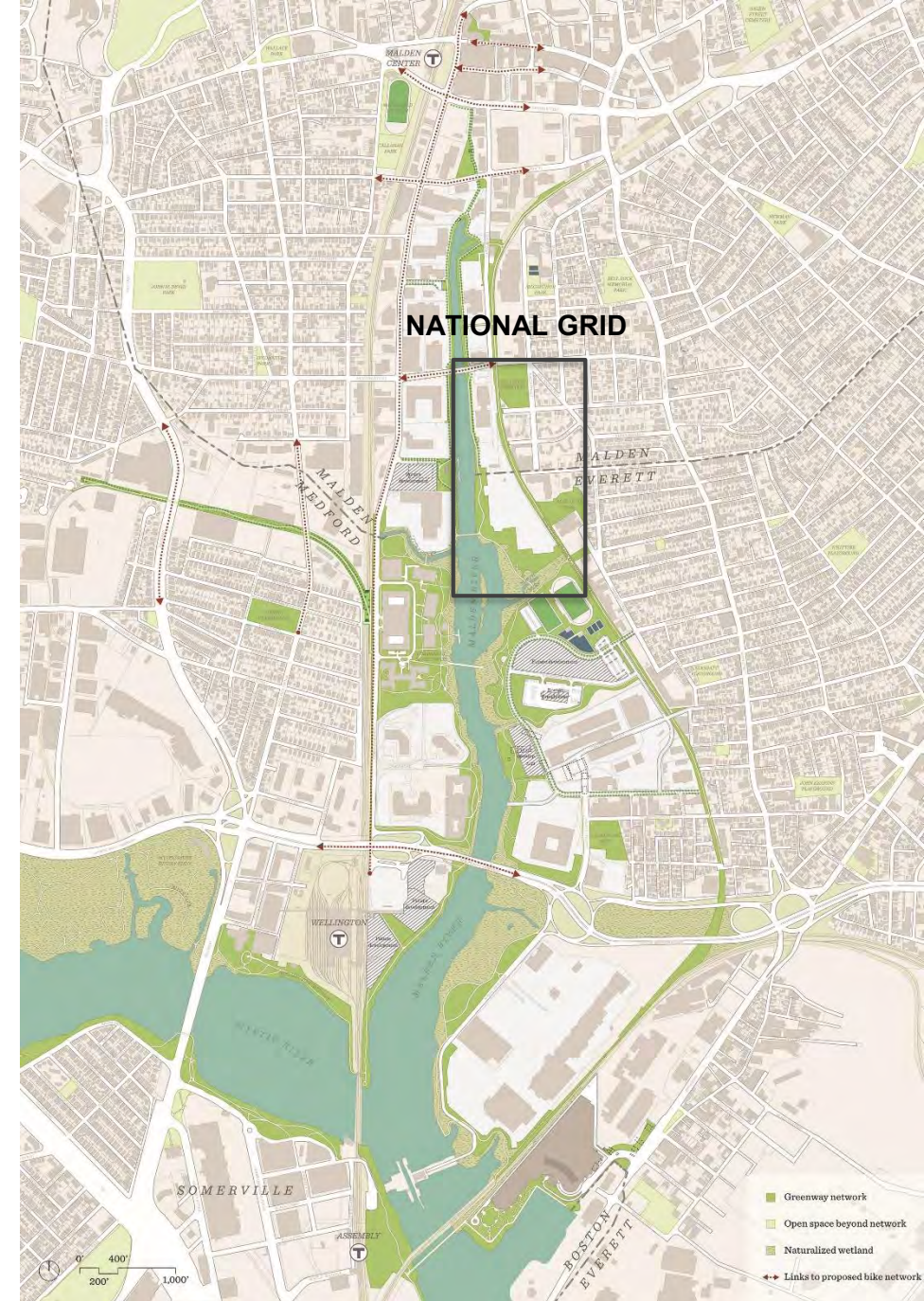


Project Opportunity: National Grid Site

- A combination of hard and natural shoreline conditions
- Direct access from Medford Street bridge and Northern Strand Trail
- Key missing link between Rivergreen and Malden River Walk north of Medford St



Aerial photo of National Grid site



National Grid Path: Existing Conditions

- At the northern end of the property the shoreline is adjacent to the National Grid facilities
- At the southern end, there is more distance between the facilities and the river, creating a naturalized condition paired with existing wetlands



National Grid property and fencing ends abruptly at the shoreline



Access to the river is blocked by security fencing that could be moved

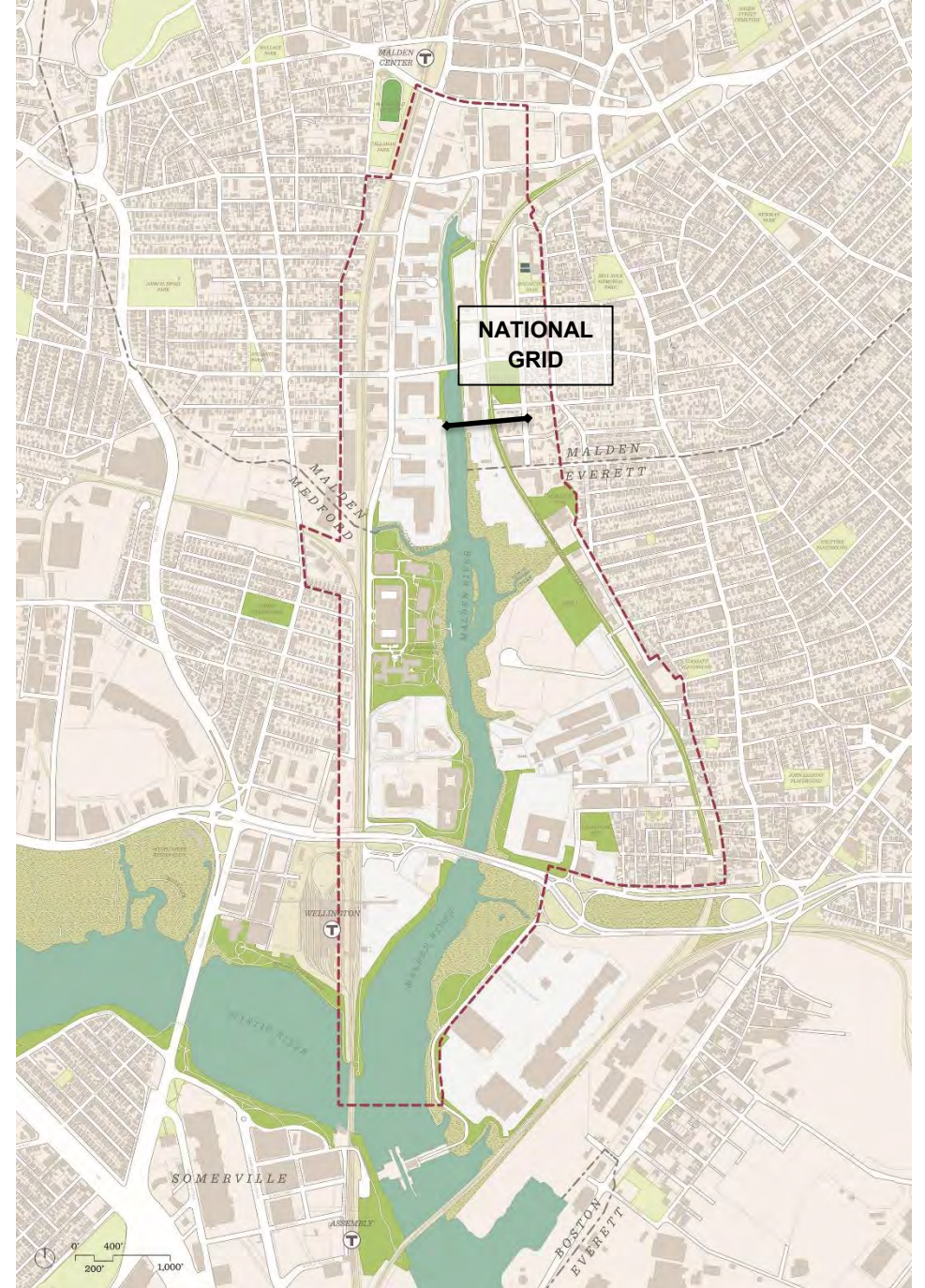
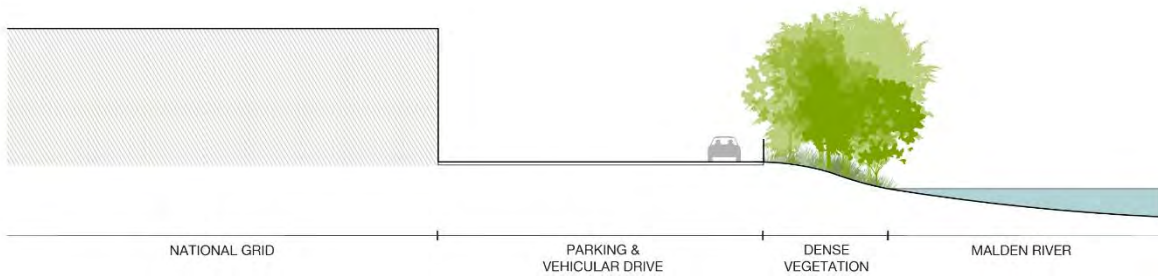


Wetland areas provide natural buffer between the shore and National Grid

National Grid Edge Conditions

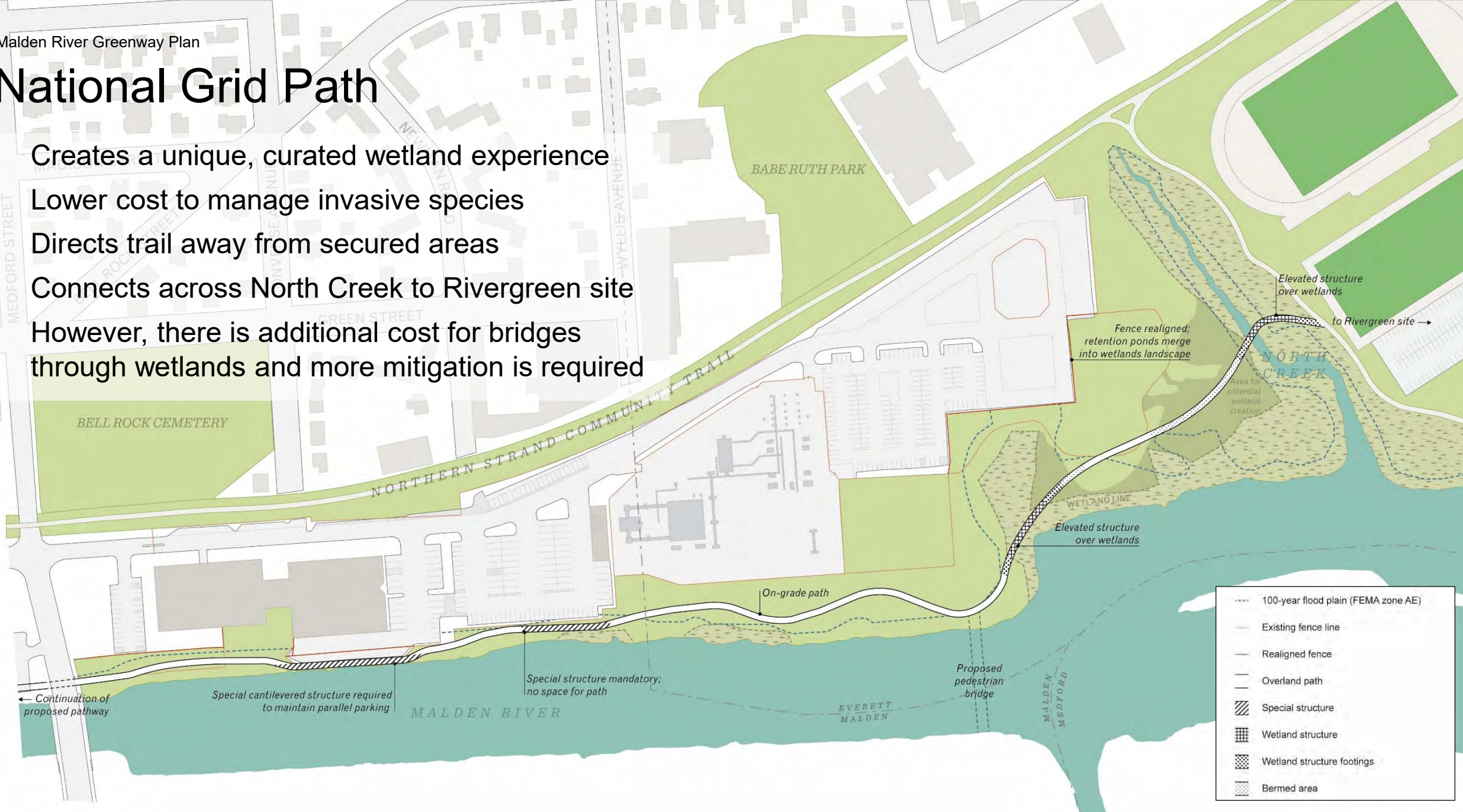


Inaccessible Riverfront with Dense Vegetation – National Grid



National Grid Path

- Creates a unique, curated wetland experience
- Lower cost to manage invasive species
- Directs trail away from secured areas
- Connects across North Creek to Rivergreen site
- However, there is additional cost for bridges through wetlands and more mitigation is required



Little Creek to Revere Parkway



Little Creek to Revere Pkwy

Existing Character

- The west side of the river from the Malden city line to Revere Beach Pkwy is complete or under construction
- The east side of the river in this area is largely underutilized and undeveloped
- The Rivergreen site will be redeveloped with future waterfront open space and new connections



Little Creek to Revere Pkwy



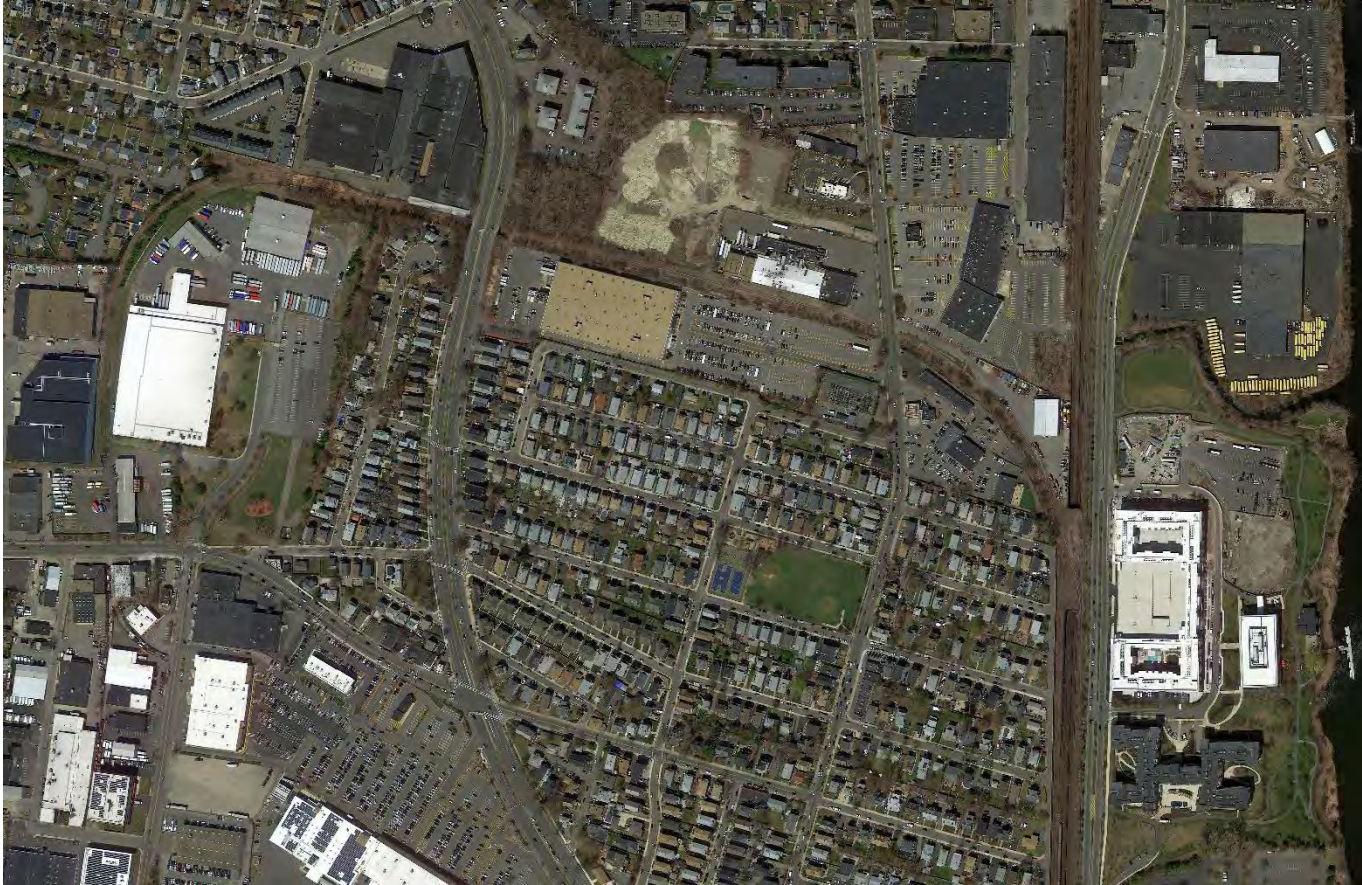
River's Edge, Medford



Little Rock, AR



Wellington Connector



Wellington Connector



Rail line looking north at platform

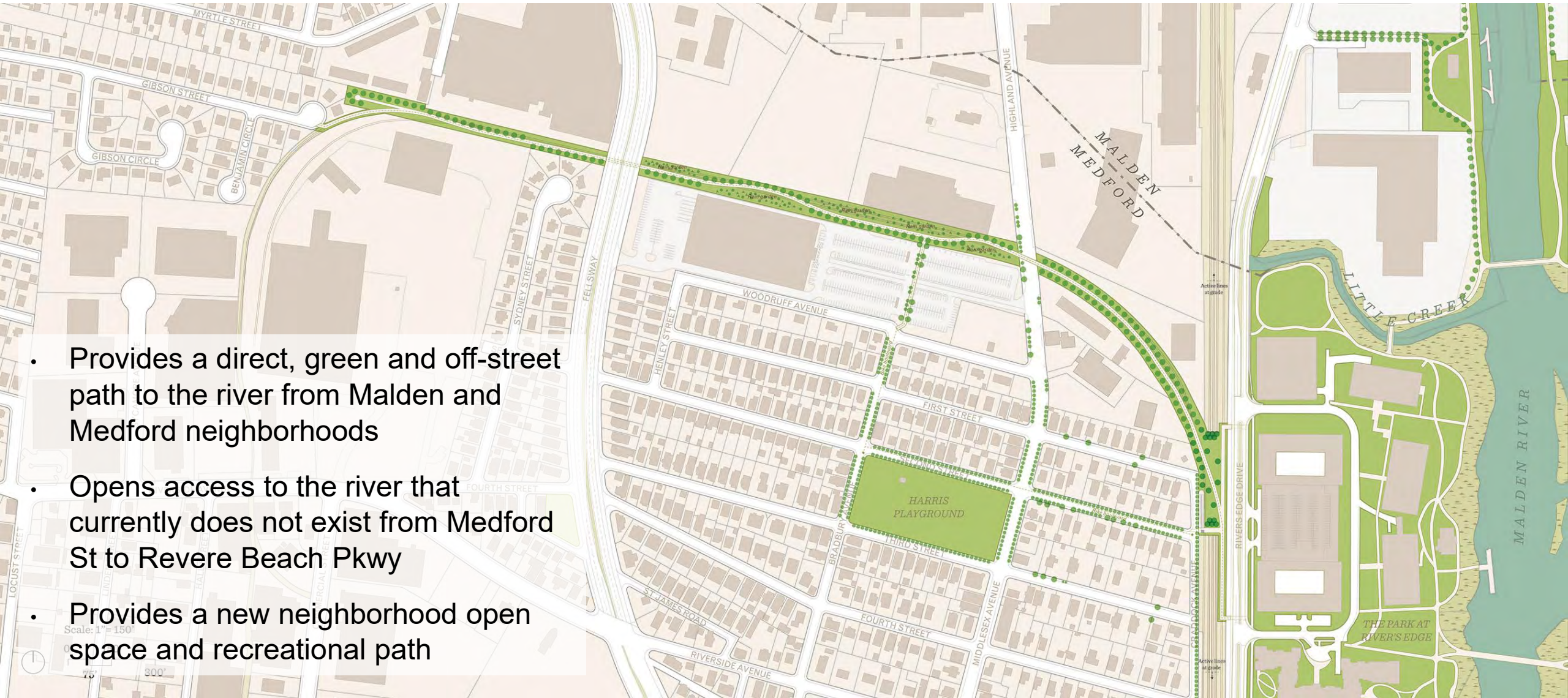


Rail spur capped over the MBTA line



Sound wall and future access to rail park

Wellington Connector: Neighborhood Context



- Provides a direct, green and off-street path to the river from Malden and Medford neighborhoods
- Opens access to the river that currently does not exist from Medford St to Revere Beach Pkwy
- Provides a new neighborhood open space and recreational path

Wellington Connector: Precedent Projects



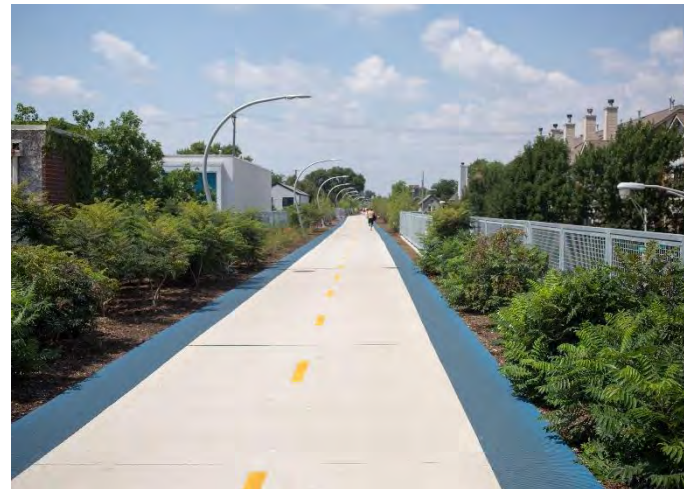
Somerville Community Path: Somerville, MA (top and bottom)



The 606: Chicago, IL (top and bottom)



The Rail Park: Philadelphia, PA (top and bottom)



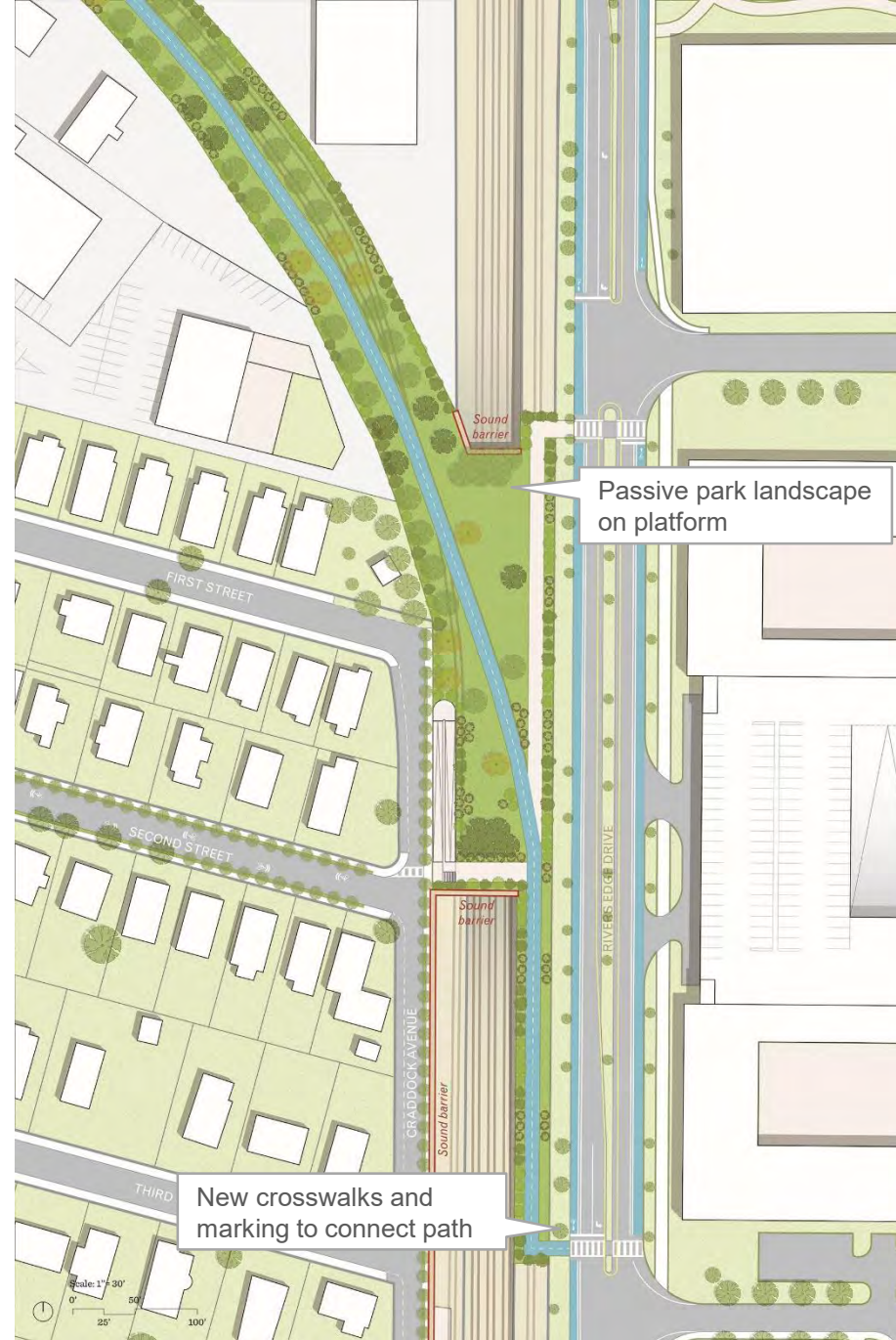
Wellington Connector: Neighborhood connections

- Convert Second Street and Bradbury Avenue to bike boulevards (slow neighborhood streets)
- Provides direct connections to Harris Playground along Second Street.
- Potential for additional access point through BJ's parking lot

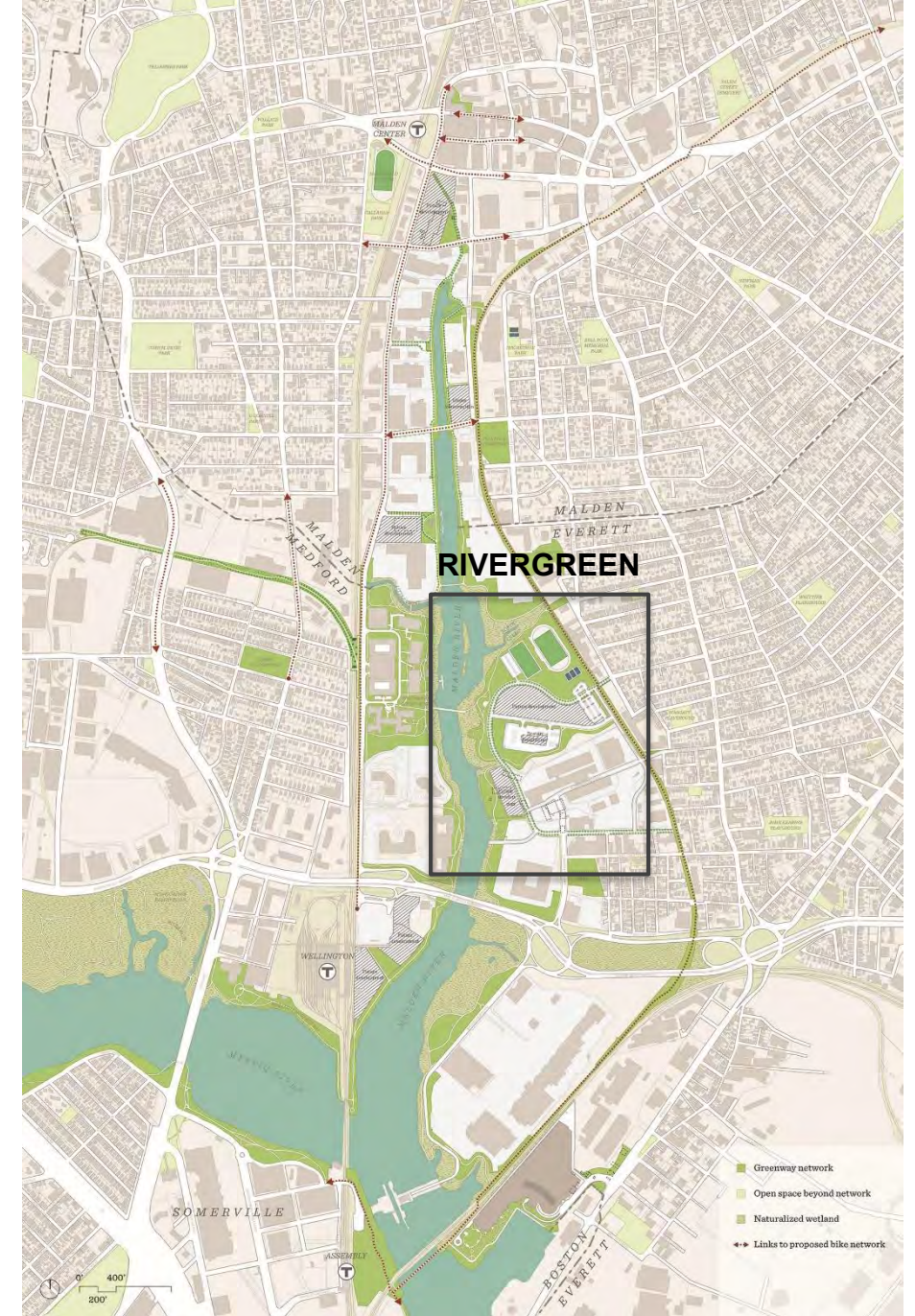


Wellington Connector: Platform

- Ramp and stairs from Second Street provides access to the platform park
- Sound barriers wrap tunnel opening to mitigate removal of portion of existing wall
- Additional street trees along Craddock Avenue protect privacy of immediate neighbors and soften wall edge condition
- The width of travel lanes on River's Edge Drive are reduced, allowing for an in-road cycle track or buffered bike lanes.



Rivergreen



Rivergreen Site: Existing Conditions



Rivergreen existing conditions looking towards the river



Rivergreen – Current Riverwalk Site Plan

Rivergreen Parkway plan

- Almost 2,000 feet of public park frontage
- A connection to Prescott Street and extensions to Waters Avenue and Santilli Highway integrate the area into the existing street network
- Parkway meets the Northern Strand Trail at two locations
- Creates a park promenade with direct access to the Malden River
- Maintains developable area internal to the new riverfront drive.



Rivergreen: Local Riverfront Precedents



Memorial Drive at John Weeks Bridge – Cambridge, MA



Memorial Drive during River Festival – Cambridge, MA



Assembly Row Sylvester Baxter Riverfront Park – Somerville, MA



Magazine Beach – Cambridge, MA



The Esplanade Park – Boston, MA



Storrow Drive along The Esplanade – Boston, MA

Rivergreen to River's Edge Open Space Network



Rivergreen to River's Edge Open Space Network



The Malden River Basin



The Malden River Basin

Existing Character

- Broad open views towards a naturalized condition of wetlands on the east bank and an extended river trail on the west bank
- Gateway Center path feels disconnected from the rest of the river trail
- Wellington Greenway extension along the west bank should be a priority



Wellington Greenway at the Malden River



The Malden River Basin



Limerick, Ireland



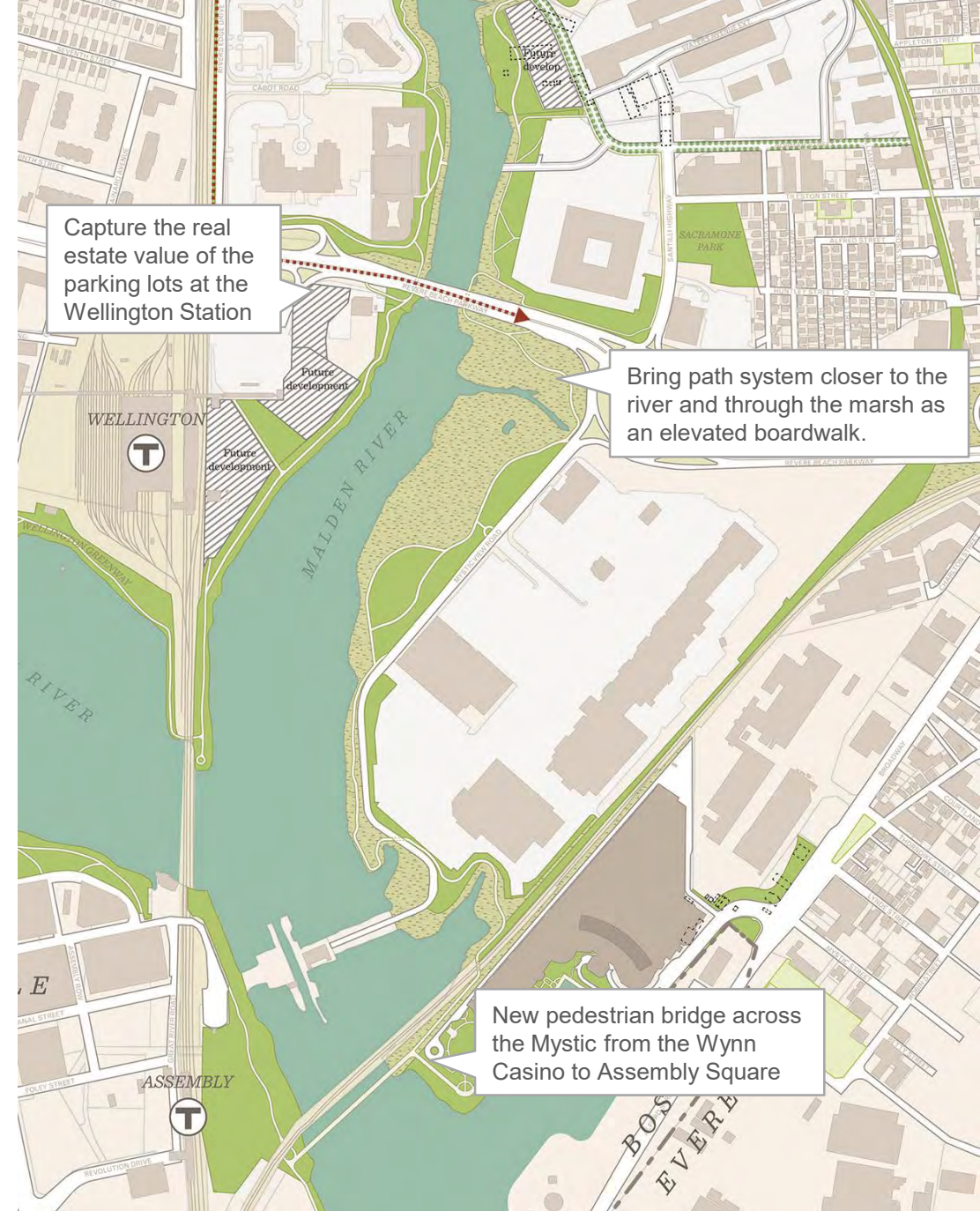
Jekyll Island, GA



Little Rock, AR



Neponset Greenway - Milton, MA



Capture the real estate value of the parking lots at the Wellington Station

Bring path system closer to the river and through the marsh as an elevated boardwalk.

New pedestrian bridge across the Mystic from the Wynn Casino to Assembly Square

Recreational Opportunities



Recreational opportunities

Boat Club

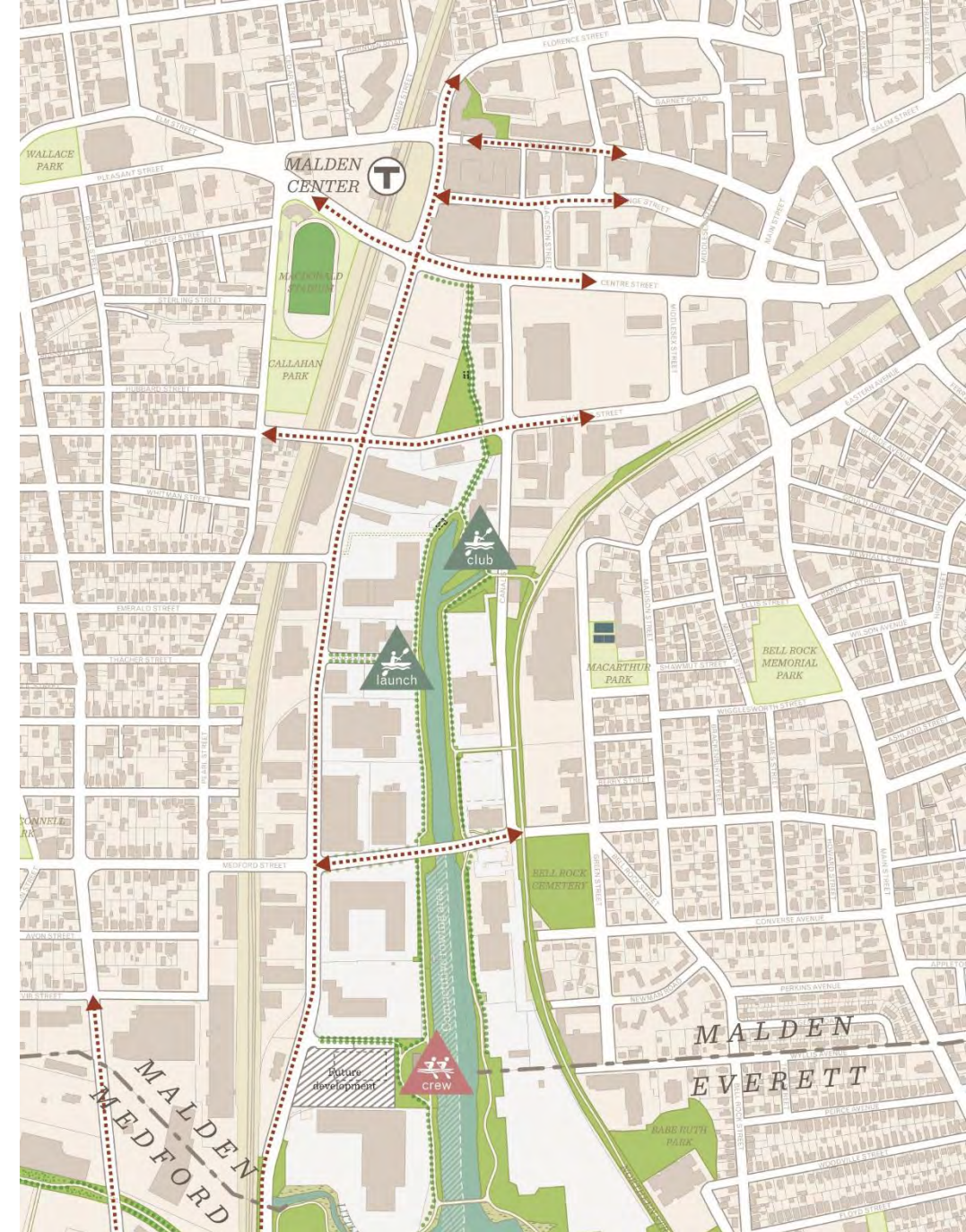
- Membership-style operation, people can store boats there, attracts more experienced boaters



Community Boat Club – Cambridge, MA



Malden High School Rowing



Recreational opportunities

Boat Rental

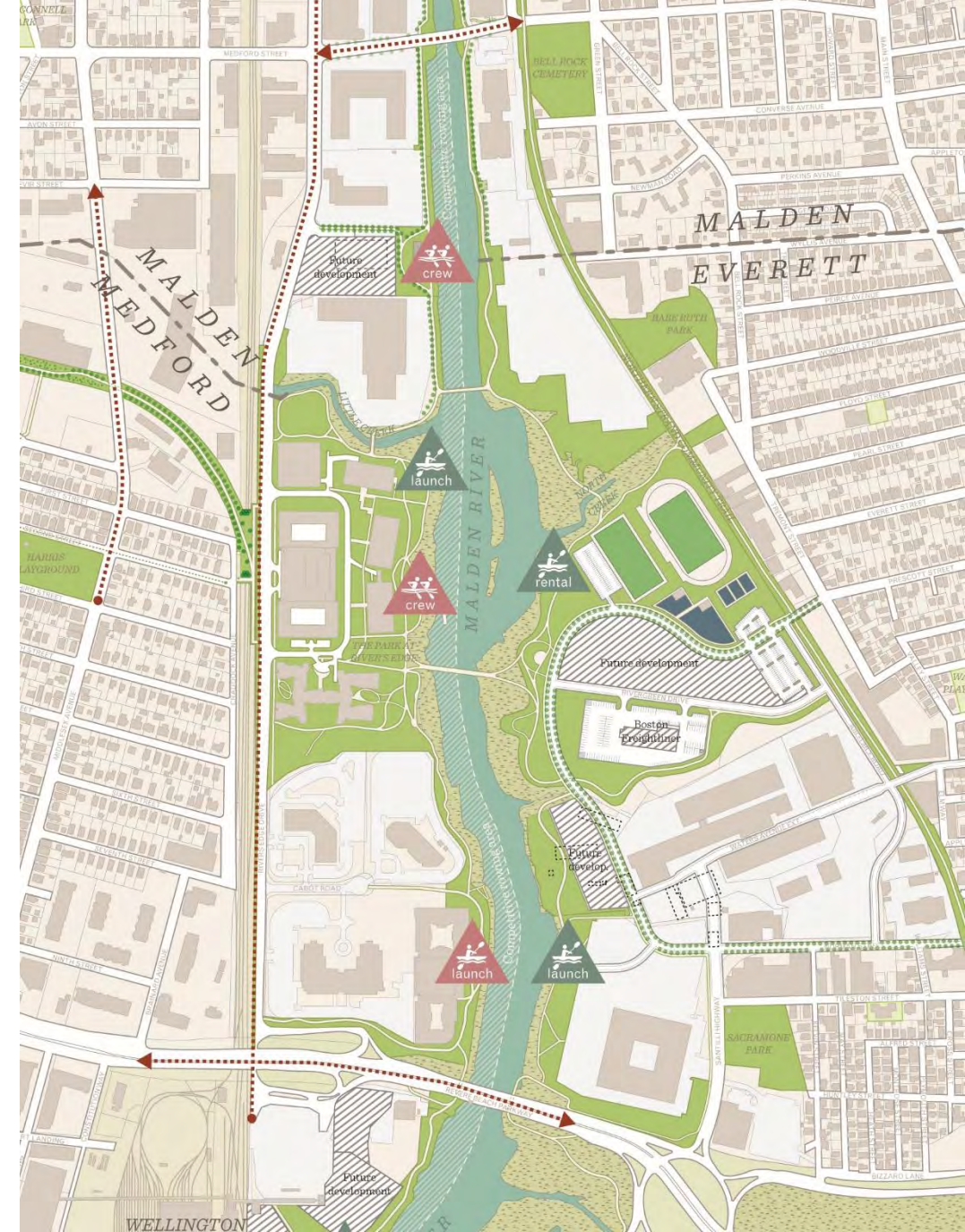
- Walk-in canoe/kayak rental, need good staging area for people to get in and out and avoid rowers

Boathouse

- Largest investment/space needed; can hold better boats than a typical rental space; can host other community activities



Tufts Boathouse – Medford, MA



Recreational opportunities

Boat Launch/Ramp (with parking)

- Ramp serves motor boats, needs space for trailers (motor not recommended unless at the mouth of the Malden)

Boat Launch/Ramp (no parking)

- Area for people to launch their own boats; needs the least infrastructure



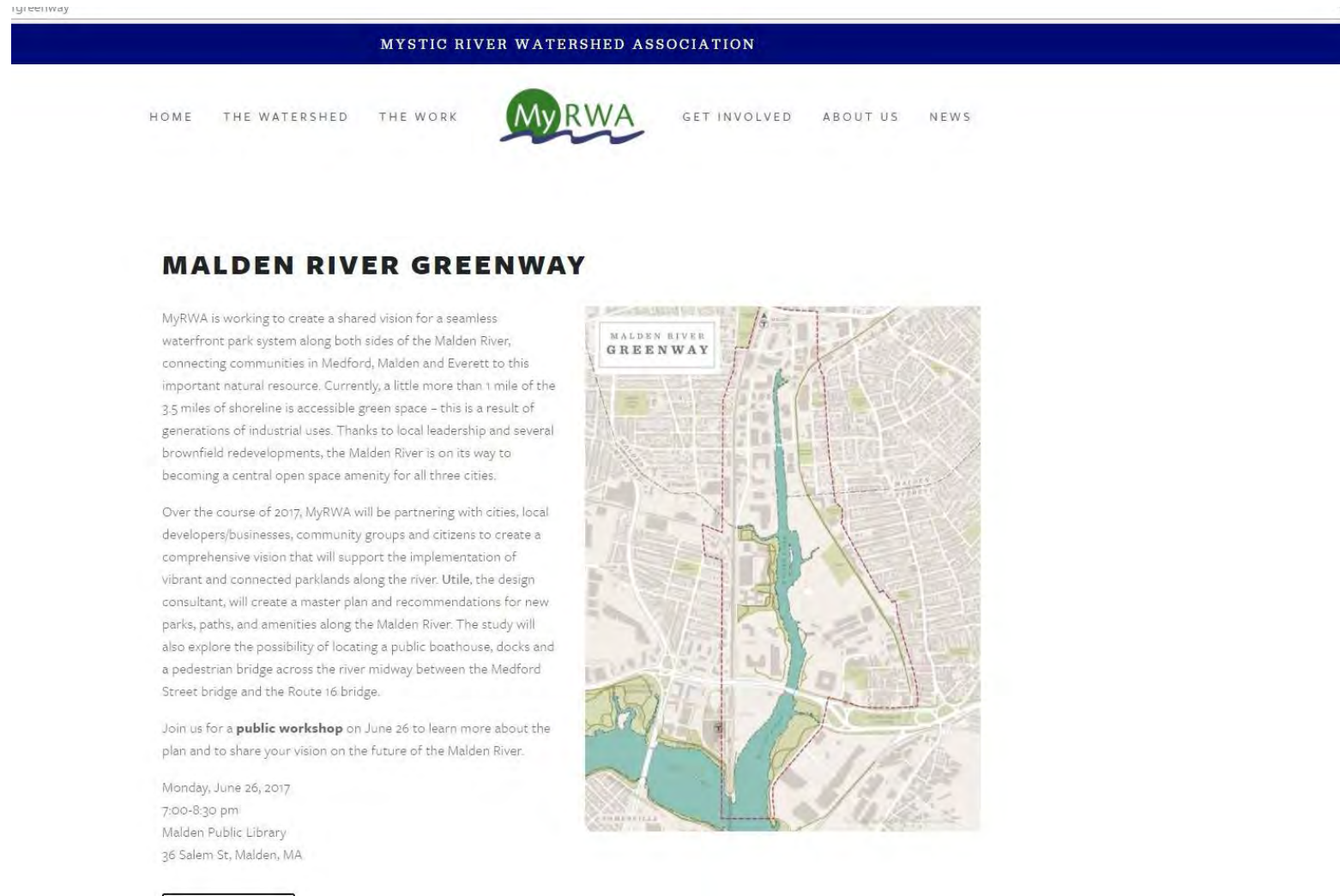
Community Engagement: Project Page

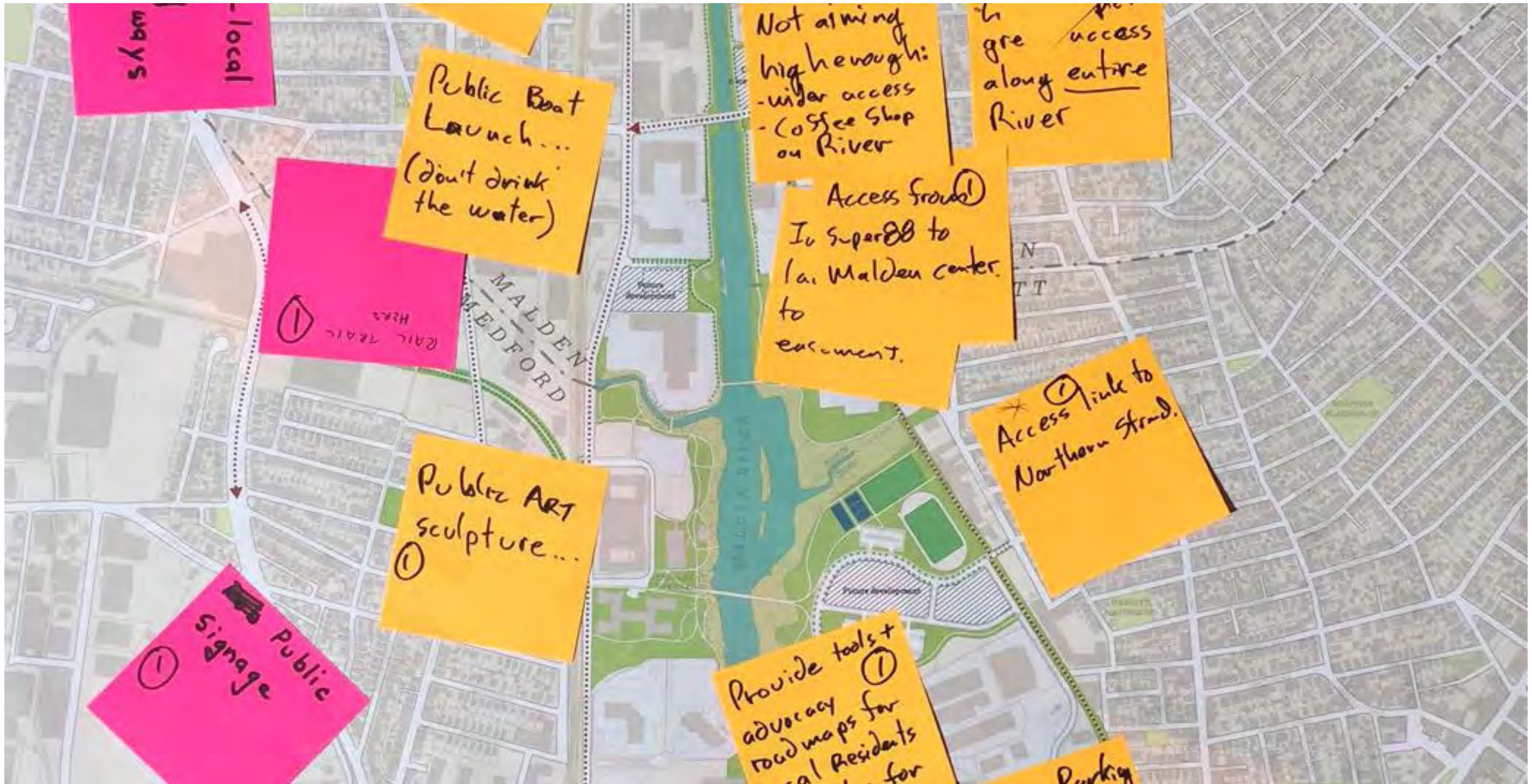
The “official home” of the project:
mysticriver.org/maldenrivergreenway

- Project summary and milestones
- Links to on-line mapping survey
- Links to project documents
- Event listings

Project Next Steps:

- Continue to provide your thoughts and ideas about the Malden River Greenway!





ways - local

Public Boat Launch...
(Don't drink the water)

Not aiming high enough:
- wider access
- Coffee Shop on River

to gre... access
along entire River

①
RAIL TRAIL HERE

Access from ①
To Super 88 to
La. Malden center
to easement.

Public ART sculpture...
①

* ①
Access link to
Northern Strand.

①
Public Signage

Provide tools + ①
advocacy for
road maps for
residents
for

Parking

