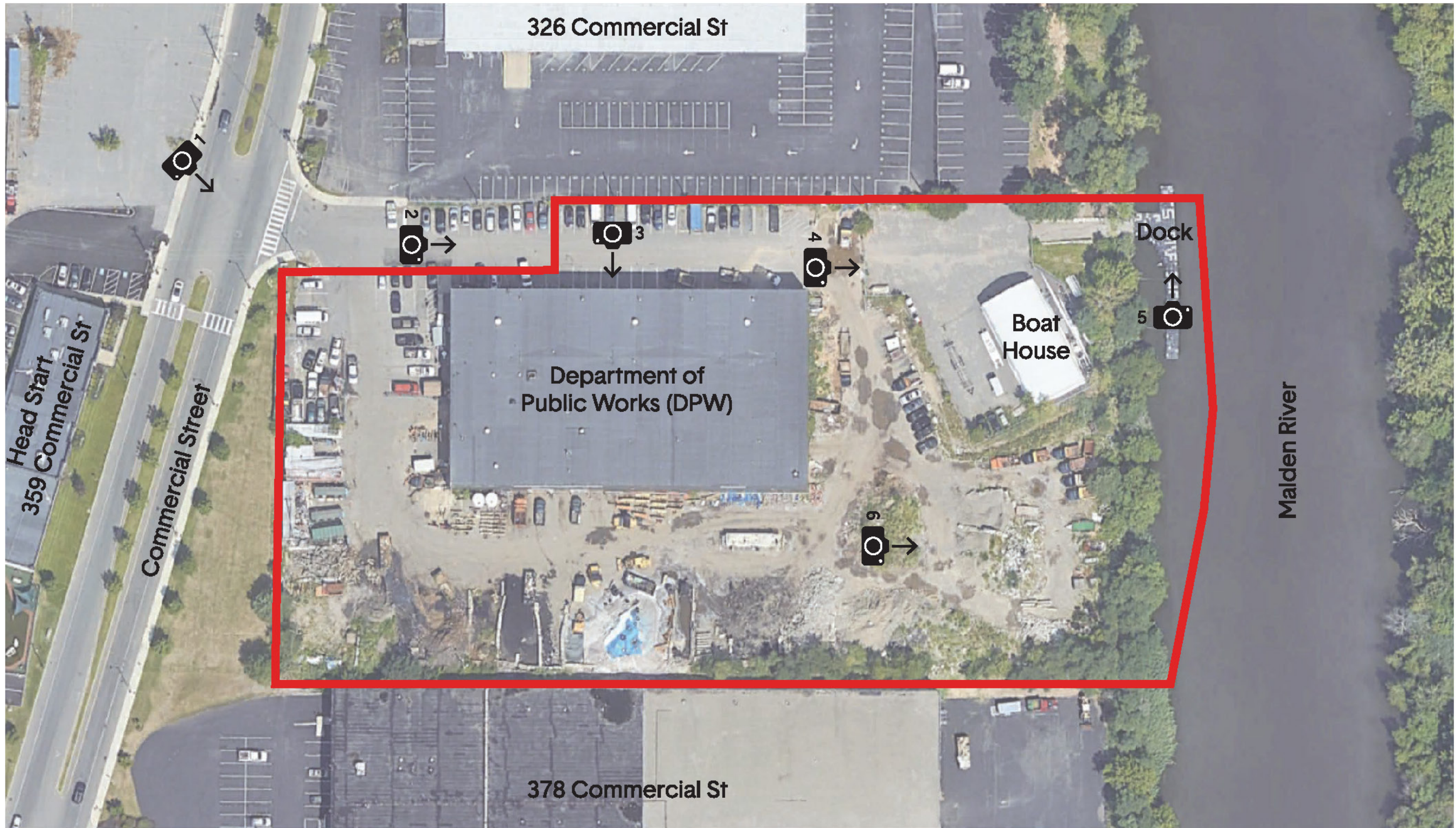
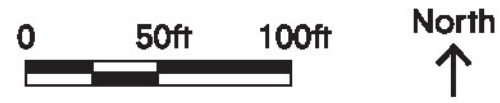


MALDEN WORKS for waterfront equity and resilience

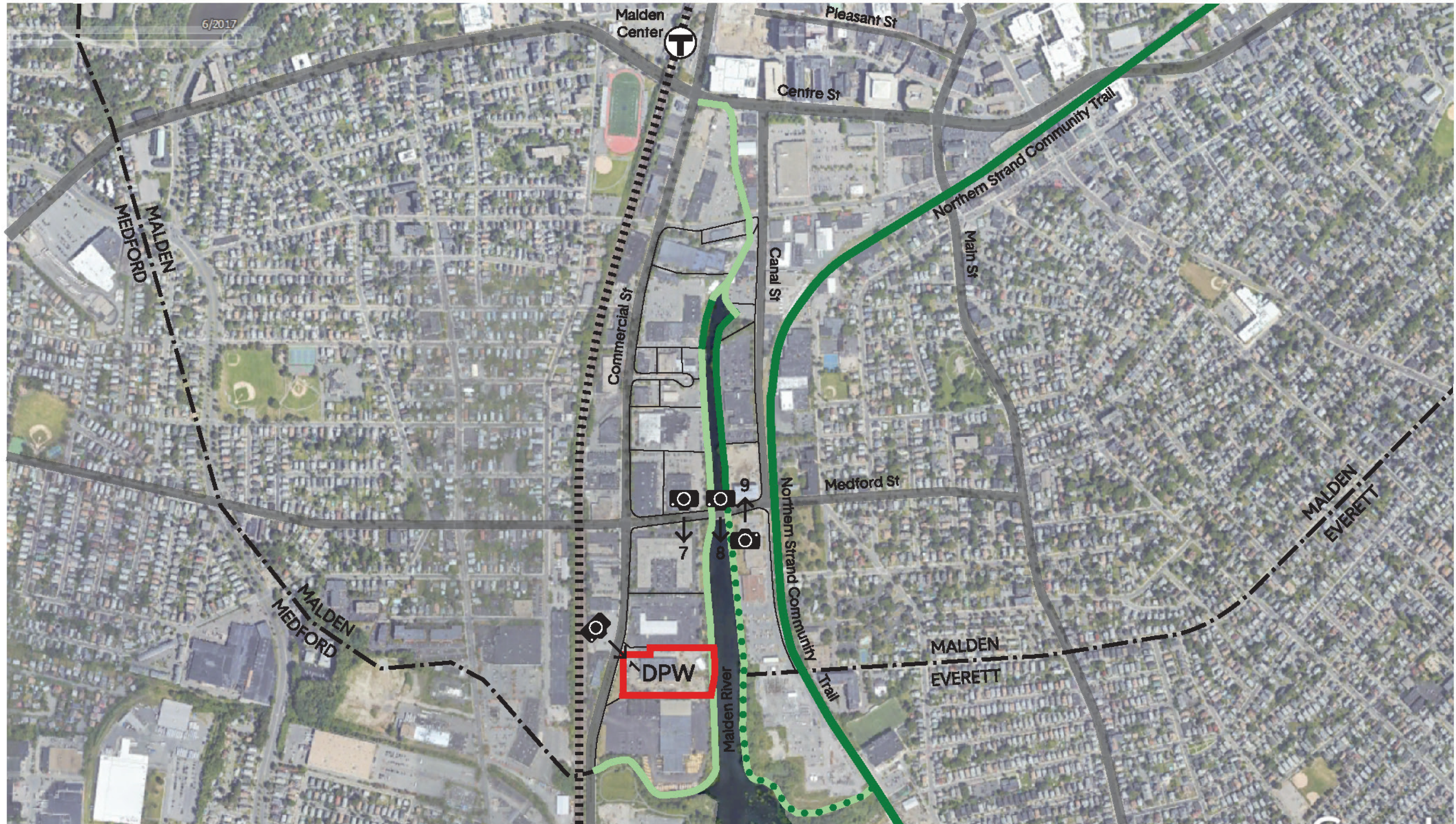


Key

 Department of Public Works (DPW) parcel

 # Location of a photograph (see # on photos page)

MALDEN WORKS for waterfront equity and resilience



Key

- City limit
- MBTA rail
- Department of Public Works (DPW) parcel

- #
↑
Location of a photograph
(see # on photos page)

Status of Malden River Greenway paths

- Existing path
- In-progress path
- Proposed path



1 Looking from Commercial Street to DPW



2 Looking to boat house from DPW entry area



3 DPW building

Photo by Xio Alvarez



Photo by Xio Alvarez

4 View of boat house from gate area



Photo by Jonah Susskind

5 Boat house dock looking towards Medford St Bridge



Photo by Xio Alvarez

6 Loader working at DPW



Photo by Xio Alvarez

7 Path at 300 Commercial St



8 Looking south at Malden River from the Medford St Bridge



9 River path at 295 Canal St